

## SUITE FRANÇAISE

d'après Claude Gervaise

## I. Bransle de Bourgogne

Francis Poulenc

arr. I. Rae

Gai, mas sans hâte (♩=100)

4

*f*

2

6

1

*mf*

*ff très sec*

3

2

*f*

*ff*

3

2

*p*

36

*ff très sec*

3

4

2

*f*

45

2

*p*

2

5

*mf*

56

*ff très sec*

3

4

## II. Pavane

Grave et mélancolique (♩=46)

8

*mp*

4

1

*mf*

*p*

24

*ten.*

2

*ppp*

31

*pp*

2

3

*p*

3

Copyright © 1950 Éditions Durand - Paris

All rights reserved

Reproduced by kind permission of MGB Hal Leonard s.r.l.

www.merittshillmusic.com

2  
42

Flute 1

**4** **9**

*p*

### III. Petite Marche Militaire

Franchement animé ♩=138

*f sec*

11

**1** *ten.* *mf*

21

*ten.* **2** **11** **3** **7** **4** **8** *f*

52

**5** *mf*

61

*f* *sff sec*

### IV. Complainte

Calme et mélancolique ♩=46

1. Solo *p*

7

**1** tous autres **4** **2** **2**

20

*p* *pp* *long* *Enchaînez*

## V. Bransle de Champagne

Modéré, mais sans lenteur (♩=96)

6 1 2 2

*mf* *pp* très doux

12 *pp*

17 *pp* *ff* *f* 5

23 2 4 3 5 *p* *mf*

32 2 6 *pp* senza vib. *morendo* *pp*

## VI. Sicilienne

Très doucement (♩=48)

*pp* très doux *pp*

1 2 *mf* *f*

2 1. Solo *p* doux *ten.* 7

28 3 5 *pp*

## VII. Carillon

Très vite (♩=92)

*ff*  
*f*  
 22 *mf* *ff*  
 51 *sf mf sf mf sf mf sf mf*  
 62 *ff* *mf* *ff*  
 90 *ff*  
 101 *f*  
 112 *sf mf sf mf sf mf sf mf ff*  
 122 *ff*  
 135 *fff*

# SUITE FRANÇAISE

d'après Claude Gervaise

## I. Bransle de Bourgogne

Francis Poulenc  
arr. I. Rae

Gai, mas sans hâte (♩=100)

4 2 6 1

*f* *mf*

18 2

*ff* très sec 3

27 1. 2 3 2 *p*

*f* *ff*

37 4 2 2 *f*

*ff* très sec 3

47 2 2 5 *p* *mf*

57 4

*ff* très sec 3

## II. Pavane

Grave et mélancolique (♩=46)

8 4

*mp*

1 1. *mf* *p*

24 *ten.* 2 *ppp*

31 2 3 3 *pp* *p*

2  
42

Flute 2

**4** **9**

*p*

### III. Petite Marche Militaire

Franchement animé ♩=138

*f sec*

10

**1** *ten.* *mf*

20

*ten.* **2** **11** **3** **7** **4** **8** *f*

52

**5** *mf*

61

*f* *sf sec*

### IV. Complainte

Calme et mélancolique (♩.=46)

1. Solo

*p*

8

**1** **4** **2**

20

*p* *Enchaînez*

## V. Bransle de Champagne

Modéré, mais sans lenteur (♩=96)

6 1 2

*mf* *pp* très doux

12 *pp*

17 *pp* *ten.* *ff* *p*

26 *mf*

6 *pp* senza vib. *morendo* *pp*

## VI. Sicilienne

Très doucement (♩=48)

1. 3 1

*pp* très doux *pp*

10 2 2 4

*mf* *f*

21 3 5

*pp*

## VII. Carillon

**Très vite** (♩=92)

**ff**

**1** **6**

**17** **f** **2** **10** **3** **16**

**4** **ff** **5** **sf** **mf** **sf** **mf**

**60** **sf** **mf** **sf** **mf** **ff** **6** **mf**

**71** **5** **7** **f** **2** **6**

**89** **8** **ff**

**100** **6** **f** **9** **sf** **mf** **sf** **mf**

**116** **sf** **mf** **sf** **mf** **ff** **6** **10** **ff**

**132** **fff**



Piccolo

# SUITE FRANÇAISE

d'après Claude Gervaise

## I. Bransle de Bourgogne

Francis Poulenc

arr. I. Rae

Gai, mas sans hâte (♩=100)

Musical score for I. Bransle de Bourgogne, Piccolo part. The score is in 2/4 time and consists of four staves. The first staff begins with a 4-measure rest, followed by eighth-note patterns with accents and slurs, and a 2-measure rest. The second staff starts with a first ending bracket (1) over a 5-measure rest, followed by eighth-note patterns, a 2-measure rest, and a 3-measure rest. The third staff begins at measure 38 with eighth-note patterns and a 2-measure rest. The fourth staff begins at measure 48 with eighth-note patterns, a 6-measure rest, a 5-measure rest, and a 4-measure rest. Dynamics include *f* (forte) and *p* (piano).

## II. Pavane

Grave et mélancolique (♩=46)

Musical score for II. Pavane, Piccolo part. The score is in 3/2 time and consists of a single staff. The entire staff is a 12-measure rest, labeled "TACET".

## III. Petite Marche Militaire

Franchement animé (♩=138)

Musical score for III. Petite Marche Militaire, Piccolo part. The score is in 2/4 time and consists of four staves. The first staff begins with a 12-measure rest, followed by a 6-measure rest, and then eighth-note patterns with accents. The second staff starts at measure 22 with eighth-note patterns, a 11-measure rest, a 7-measure rest, and an 8-measure rest. The third staff begins at measure 51 with eighth-note patterns and slurs. The fourth staff starts with a 5-measure rest, followed by eighth-note patterns, and ends with a 5-measure rest. Dynamics include *mf* (mezzo-forte) and *sff sec* (sforzando, staccato).

Copyright © 1950 Éditions Durand - Paris

All rights reserved

Reproduced by kind permission of MGB Hal Leonard s.r.l.

[www.merittshillmusic.com](http://www.merittshillmusic.com)

## IV. Complainte

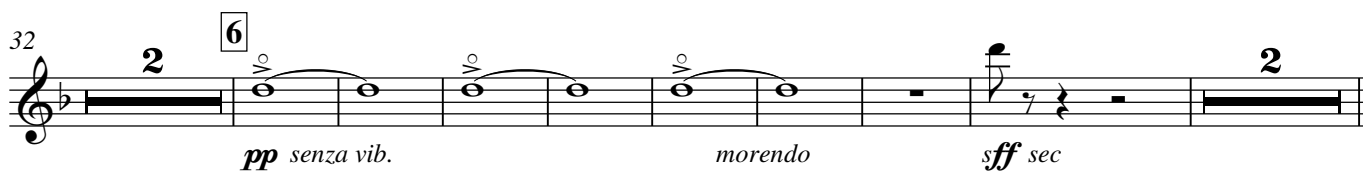
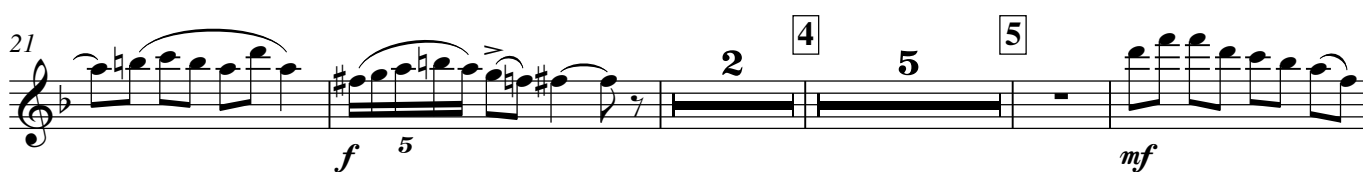
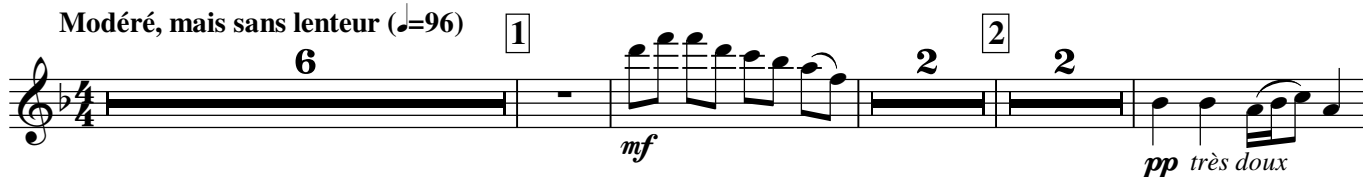
Calme et mélancolique (♩.=46)

TACET



## V. Bransle de Champagne

Modéré, mais sans lenteur (♩.=96)



## VI. Sicilienne

Très doucement (♩.=48)



## VII. Carillon

**Très vite** (♩=92)

**ff**

**f**

20 **2** 10 **3** 5 **f**

41 **8** **4** **ff**

57 **5** *sf mf sf mf sf mf sf mf ff*

**6** 10 **7** **f** 2 2

85 2 **8** **ff**

94 **f**

104

**9** *sf mf sf mf sf mf sf mf ff* 6

**10** 8 **ff** *8va* **fff**

Oboe 1

# SUITE FRANÇAISE

d'après Claude Gervaise

## I. Bransle de Bourgogne

Francis Poulenc

arr. I. Rae

Gai, mas sans hâte (♩=100)

4

*f*

11

6

1

5

*f*

*ff* très sec

3

2

*f*

27

6

3

2

*p*

*f*

*ff* très sec

3

4

2

*f*

2

51

4

5

*f*

*ff* très sec

3

4

## II. Pavane

Grave et mélancolique (♩=46)

16

1

*mf*

21

*p*

*ten.*

2

*ppp*

29

*pp*

3

2

7

42

*p*

4

9

Copyright © 1950 Éditions Durand - Paris

All rights reserved

Reproduced by kind permission of MGB Hal Leonard s.r.l.

[www.merrittshillmusic.com](http://www.merrittshillmusic.com)

### III. Petite Marche Militaire

Franchement animé ♩=138

11 1 *ten.* *mf*

20 *ten.* 2 **11** 3 **7** 4 **8**

51 *f* *mf* 5

61 *f* *sff sec*

### IV. Complainte

Calme et mélancolique (♩.=46)

1. Solo *p*

7 1 **8** 2 *p*

19 **5** *pp* *long* *Enchaînez*

## V. Bransle de Champagne

Modéré, mais sans lenteur (♩=96)

*pp* mystérieux *mf*  
 9 *pp* très doux  
 15 *pp* *ten.* *ff*  
 21 *sf* *p*  
 5 *mf* 6 *pp* très doux  
 36 *morendo* *sff sec*

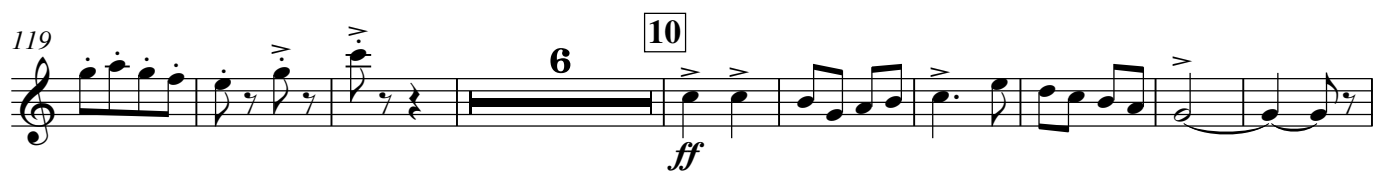
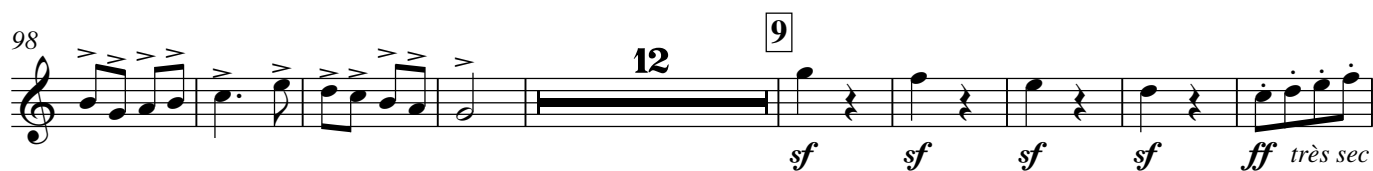
## VI. Sicilienne

Très doucement (♩=48)

*pp* très doux *mp cresc.*  
 15 *f* *pp*  
 3 5

## VII. Carillon

Très vite (♩=92)



**SUITE FRANÇAISE***d'après Claude Gervaise***I. Bransle de Bourgogne**

Francis Poulenc

*arr. I. Rae*

Gai, mas sans hâte (♩=100)

4 2 6

*f*

1 5 2 6

*f* *ff très sec* 3 *f*

3 2 4 2

*p* *f* *ff très sec* 3

43

*f*

51 4 5 4

*f* *ff très sec* 3

**II. Pavane**

Grave et mélancolique (♩=46)

16 1. 2

*mf* *p*

22 *ten.* 2

*ppp*

29 3 2 3 12 4 9



### III. Petite Marche Militaire

Franchement animé ♩=138

10

19

53

62

*f* *sec*

*ten.*

*f*

*mf*

*f* *sff sec*

### IV. Complainte

Calme et mélancolique ♩=46

1. Solo

7

19

*p*

*p*

*Enchaînez*

## V. Bransle de Champagne

Modéré, mais sans lenteur (♩=96)

1. *pp* mystérieux

2 *pp* *mf*

8 2 *pp* très doux *pp*

16 *pp* *ff* *ten.*

22 *sf* *mf*

6 2 *pp* très doux *morendo* *fff* sec

## VI. Sicilienne

Très doucement (♩.=48)

1. *pp* très doux

13 1. *mp* *cresc.* *mf* *cresc.* *f*

28 3 *pp* 5

## VII. Carillon

Très vite (♩=92)

*ff*

1 12 2 10 3 1. *mf* 11

4 *ff* 5 *sf sf*

60 *sf sf ff très sec* 6 10 7 *f*

78

87 8 *ff*

99 12 9 *sf sf sf sf ff très sec*

120 6 10 *ff*

134 *fff*

*SUITE FRANÇAISE*

Francis Poulenc

**Gai, mas sans hâte (♩=100)**

## I. Bransle de Bourgogne

### Grave et mélancolique (♩=46)

## II. Pavane

Grave et mélancolique ( $\text{♩} = 46$ )

II. FAVARÉ

12 8 4

1

2

3

2

3

4

29

39

3

4

*pp*

*p*

*p*

*pp*

Copyright © 1950 Éditions Durand, Paris

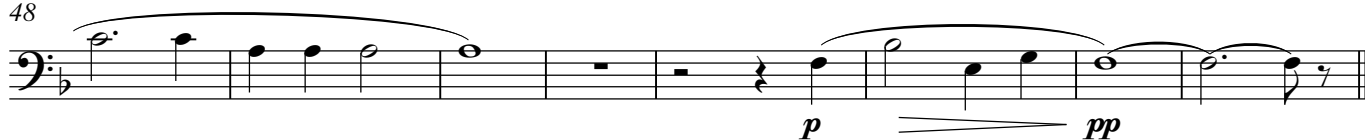
Copyright © 1950 Éditions Durand - Paris

All rights reserved

Reproduced by kind permission of MGB Hal Leonard s.r.l.

www.merrittshillmusic.com

48



### III. Petite Marche Militaire

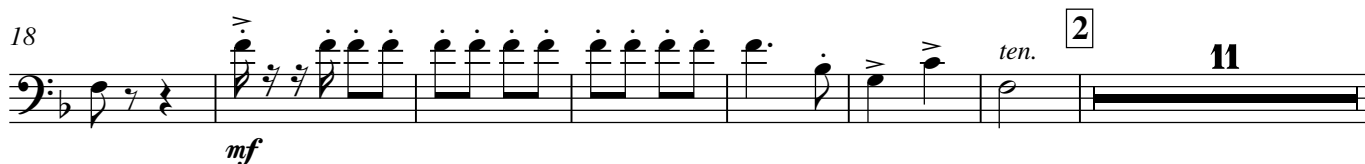
Franchement animé ♩=138



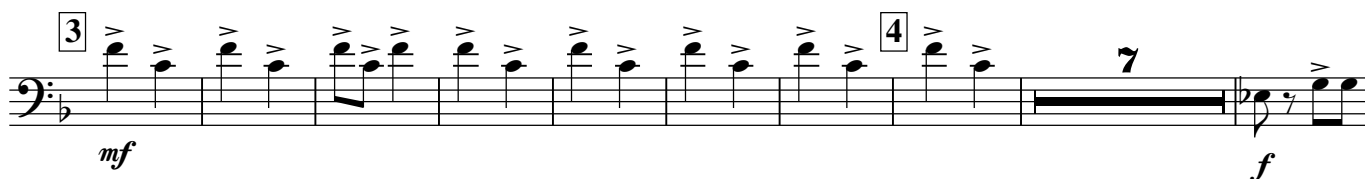
10



18



3



52



61



### IV. Complainte

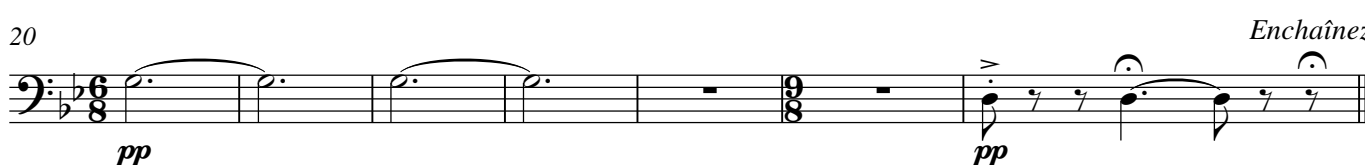
Calme et mélancolique (♩.=46)



13



20



Enchaînez

## V. Bransle de Champagne

Modéré, mais sans lenteur (♩=96)

*pp* mystérieux *mf*

8 *pp* très doux

14 *cresc.*

31 *ff* sec *p* *mf*

37 *morendo* *f* *ff* sec *pp*

## VI. Sicilienne

Très doucement (♩=48)

*pp* très doux *pp*

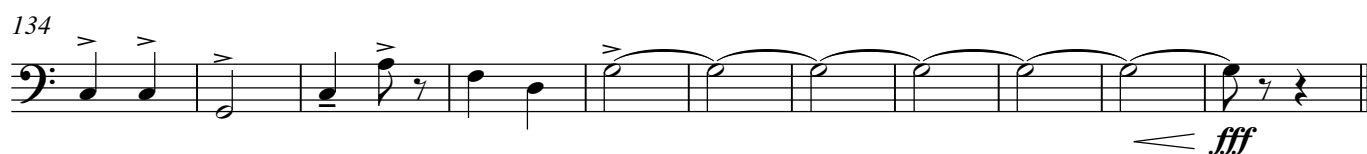
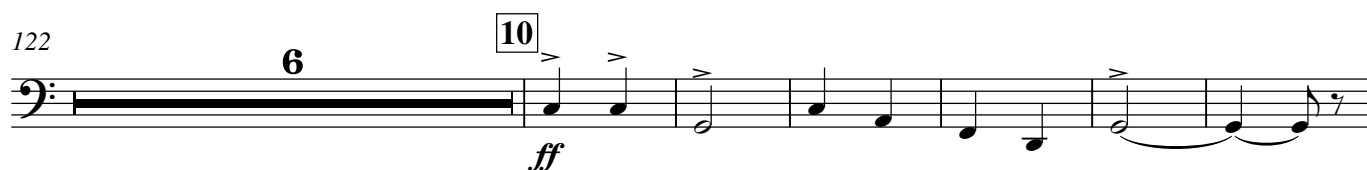
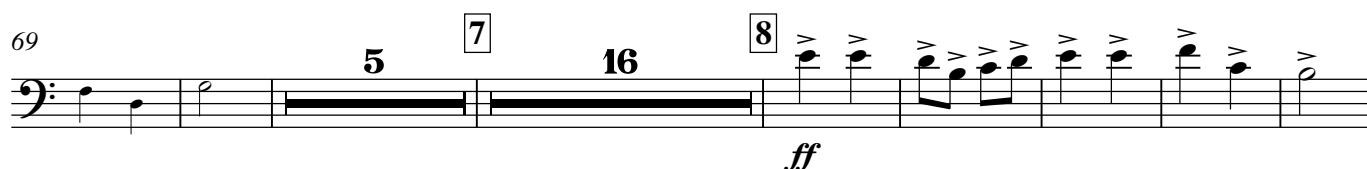
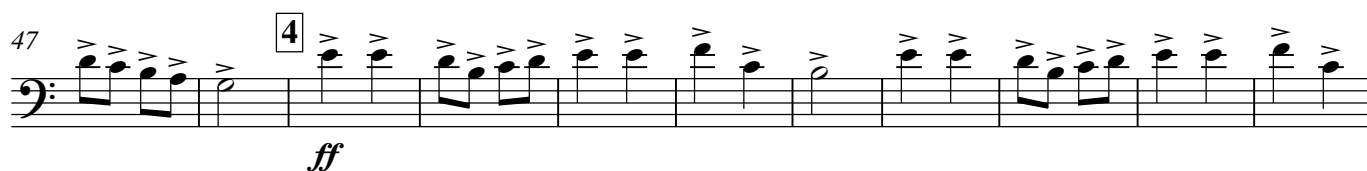
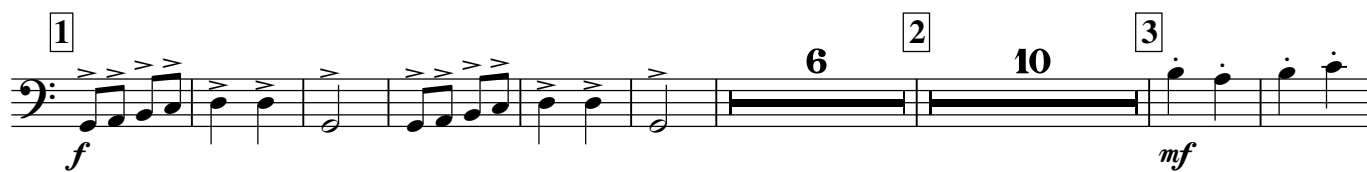
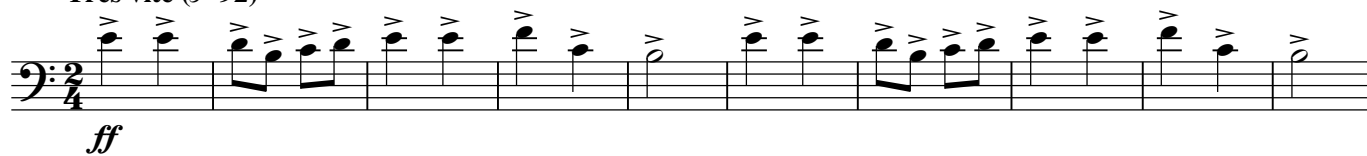
10 *mp* *cresc.* *f* *pp* doux

18 *ten.* *pp*

31 *pp*

## VII. Carillon

Très vite (♩=92)



# SUITE FRANÇAISE

d'après Claude Gervaise

Francis Poulenc

arr. I. Rae

Gai, mas sans hâte (♩=100)

## I. Bransle de Bourgogne

4

*f*

12

*p*

*mf*

*f*

22

2

29

3

2

*f*

*p*

39

4

2

*f*

2

49

5

2

*p*

*mf*

58

*f*

4

Grave et mélancolique (♩=46)

## II. Pavane

12

1.

*pp*

29

3

2

3

*p*

39

8

4

*pp*

5

Copyright © 1950 Éditions Durand - Paris

All rights reserved

Reproduced by kind permission of MGB Hal Leonard s.r.l.

[www.merrittshillmusic.com](http://www.merrittshillmusic.com)



### III. Petite Marche Militaire

Franchement animé ♩=138

*f* sec

12

1

6

2

11

3

mf

4

7

f

53

5

mf

61

f

sff sec

### IV. Complainte

Calme et mélancolique (♩.=46)

8

1

4

2

19

pp

Enchaînez

pp

### V. Bransle de Champagne

Modéré, mais sans lenteur (♩.=96)

1.

2

pp mystérieux

pp

mf

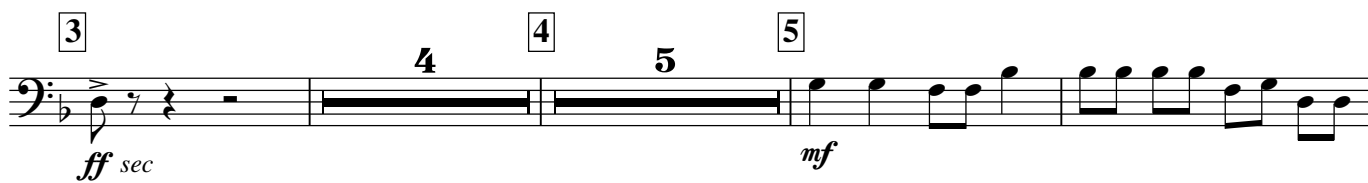
8

2

2

pp très doux

15



32



## VI. Sicilienne

Très doucement (♩.=48)



16

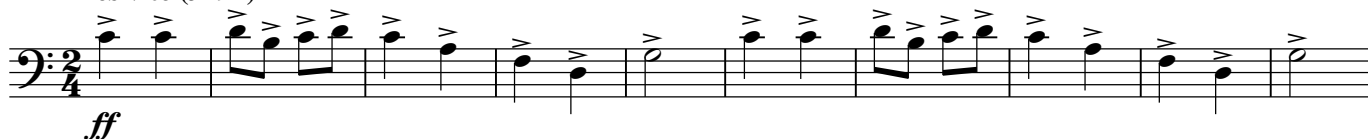


32



## VII. Carillon

Très vite (♩.=92)



3 8

*mf* *f*

4 *ff*

5 *sf* *sf* *sf* *sf* *ff* 6 *mf*

69 7 5 16 8 *ff*

97 *f*

108 6 9 *sf* *sf* *sf* *sf* *ff*

122 6 10 *ff*

135 *fff*

# SUITE FRANÇAISE

d'après Claude Gervaise

Francis Poulenc

arr. I. Rae

Gai, mas sans hâte (♩=100)

## I. Bransle de Bourgogne

4 2 2 4

*f*

1 2 8 3 6

39 *mf* *f*

4 8 4

5 2 4

*mf* *f*

## II. Pavane

Grave et mélancolique (♩=46)

16 8 2

*ppp*

30

3 12 4 9

## III. Petite Marche Militaire

Franchement animé (♩=138)

12 12 6

*f*

35 3 7 4 8

*f*

56 5 6

*f* *sff sec*

## IV. Complainte

Calme et mélancolique (♩=46)

8 4

*p*

2 5

*pp* *Enchaînez* *no V.S.*

# V. Bransle de Champagne

Modéré, mais sans lenteur (♩=96)

6 1 4 2

*pp* très doux

14

*cresc.*

3 4 4 5 5 4 6

*ff* sec *pp* très doux

36

*cresc.* *f* *fff* sec

2

# VI. Sicilienne

Très doucement (♩=48)

8 1 4

*mp* *cresc.*

16

2 4 8 3 3

*f*

32

*pp*

# VII. Carillon

Très vite (♩=92)

10 1 6 2 10

*f*

3 5 8 4 9 5 4

*f*

62

6 10 7 16 8 16

*ff*

108

9 4

*f* *ff*

121

6 10 12

*ff* *fff*

Clarinet in E $\flat$ 

*SUITE FRANÇAISE*

*d'après Claude Gervaise*

Francis Poulenc

*arr. I. Rae*

## I. Bransle de Bourgogne

### Gai, mas sans hâte (♩=100)

## II. Pavane

## Grave et mélancolique (♩=46)

Grave et mélancolique (♩=46)

16 8 1 2 *ppp*

29 2 3 12 *pp*

4 5 *pp*

### III. Petite Marche Militaire

**Franchement animé** ♩=138

Franchement animé ♩=138

12 6 11 4

*f* *mf*

Copyright © 1950 Éditions Durand - Paris

no V.S.

Copyright © 1950 Éditions Durand - Paris

All rights reserved

Reproduced by kind permission of MGB Hal Leonard s.r.l.

**no V.S.**

www.merrittshillmusic.com

2

Clarinet in E $\flat$ 

44



58



## IV. Complainte

Calme et mélancolique (♩=46)

TACET



## V. Bransle de Champagne

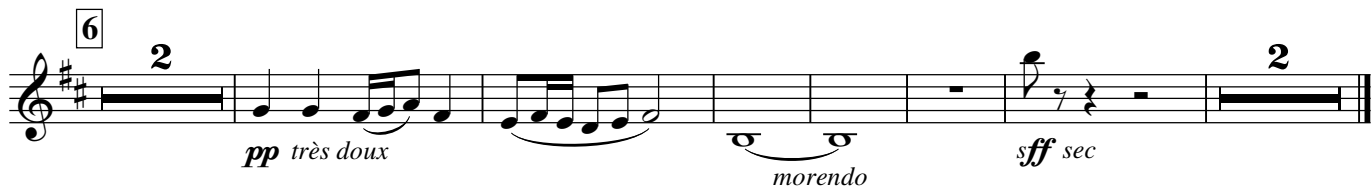
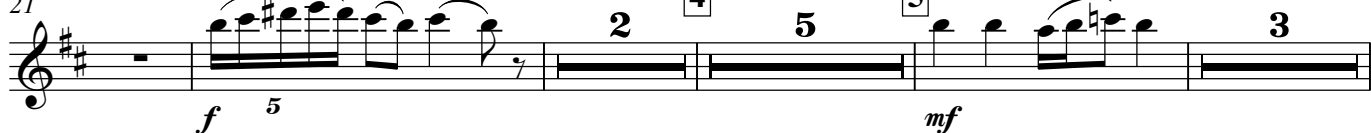
Modéré, mais sans lenteur (♩=96)



14

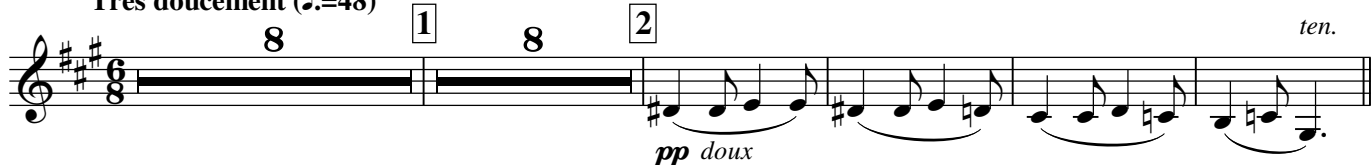


21

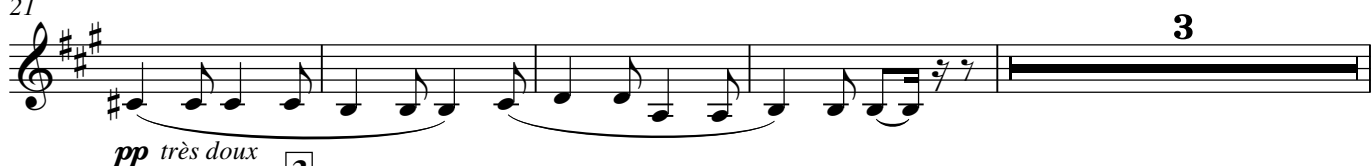


## VI. Sicilienne

Très doucement (♩=48)



21



28



## VII. Carillon

Très vite ( $\text{♩}=92$ )

*ff*

*f*

21 *f*

*ff* *sf mf sf mf*

60 *sf mf sf mf ff*

*f*

87 *ff*

97 *f*

108 *sf mf sf mf sf mf sf mf*

118 *ff*

136 *ff*

 $\text{ff}$



## SUITE FRANÇAISE

d'après Claude Gervaise

Francis Poulenc

arr. I. Rae

Gai, mas sans hâte ( $\text{♩}=100$ )

## I. Bransle de Bourgogne

Measures 1-53 of the Bransle de Bourgogne. The score is in 2/4 time with a key signature of one sharp (F#). It features a lively, dance-like melody with various dynamics and articulations. Measure numbers 13, 27, 37, and 53 are indicated at the start of their respective staves. Dynamics include *f*, *p*, *ff* très sec, and *ff* très sec. Articulations include accents, slurs, and fingerings (1, 2, 3, 4, 5). There are also measure rests of 4, 2, 6, 10, and 4 measures.

Grave et mélancolique ( $\text{♩}=46$ )

## II. Pavane

Measures 1-44 of the Pavane. The score is in 3/2 time with a key signature of one sharp (F#). It features a slow, melancholic melody with various dynamics and articulations. Measure numbers 8, 19, 26, and 44 are indicated at the start of their respective staves. Dynamics include *mf*, *p*, *pp*, and *ppp*. Articulations include slurs, accents, and fingerings (1, 2, 3, 4, 5). There are also measure rests of 4, 3, and 5 measures. A key signature change to E $\flat$  Cl. is indicated at measure 26.

## III. Petite Marche Militaire

Franchement animé  $\text{♩}=138$

12 1 *f* *ten.*

19 *mf* *ten.* 2 11 3 *mf*

38 4 7 *f*

53 5 *mf*

62 *f* *sff sec*

## IV. Complainte

Calme et mélancolique  $\text{♩}=46$

1. Solo *p*

7 1 8 2 2 9

20 4 *tous* *pp très doux* *long* *Enchaînez* *pp*

## V. Bransle de Champagne

Modéré, mais sans lenteur  $\text{♩}=96$

*pp mystérieux* 2 1 *mf*

8 2  
*pp* très doux

14 *pp* *ten.* *pp*

19 3 *ff* *sec* *f* 5 4 *p*

26 3 *mf* 5 2 6 *pp* très doux

35 *morendo* *fff* *sec* 2

## VI. Sicilienne

1. Très doucement (♩.=48)  
*pp* très doux *tous* *pp*

1 4 2 4

21 *pp* très doux 3 *pp*

3 5

## VII. Carillon

Très vite ( $\text{♩}=92$ )

**Staff 1:** *ff*

**Staff 2:** *f*

**Staff 3:** 21 *mf*

**Staff 4:** 38 *ff*

**Staff 5:** *sf mf sf mf sf mf sf mf ff*

**Staff 6:** 71 Solo *mf* 7 *tous mf sec*

**Staff 7:** 81 *f*

**Staff 8:** 103 *f*

**Staff 9:** *sf mf sf mf sf mf sf mf ff*

**Staff 10:** 10 *ff* *fff*

*SUITE FRANÇAISE**d'après Claude Gervaise*

Francis Poulenc

arr. I. Rae

Gai, mas sans hâte ( $\text{♩}=100$ )

## I. Bransle de Bourgogne

Measures 1-46 of "I. Bransle de Bourgogne". The score is in 2/4 time with a key signature of one sharp (F#). It features a lively, dance-like melody with various dynamics including *f* (forte), *mf* (mezzo-forte), and *p* (piano). The piece includes several repeat signs with first and second endings, and a 10-measure rest in measure 38. The tempo is marked as "Gai, mas sans hâte" with a quarter note equal to 100 beats per minute.

## II. Pavane

Grave et mélancolique ( $\text{♩}=46$ )

Measures 1-50 of "II. Pavane". The score is in 2/2 time with a key signature of one sharp (F#). It is a slow, melancholic piece with a tempo of 46 beats per minute. The melody is characterized by long, flowing lines and a variety of dynamics including *mf* (mezzo-forte), *p* (piano), *pp* (pianissimo), and *ppp* (pianississimo). The piece includes several repeat signs with first and second endings, and a long 8-measure rest in measure 29.

Copyright © 1950 Éditions Durand - Paris

All rights reserved

Reproduced by kind permission of MGB Hal Leonard s.r.l.

[www.merittshillmusic.com](http://www.merittshillmusic.com)

## III. Petite Marche Militaire

Franchement animé  $\text{♩}=138$

12 1

*f* *ten.*

19 *mf* *ten.* 2 11 3 *mf*

37 4 7 *f*

53 5 *mf*

62 *f* *sff sec*

## IV. Complainte

Calme et mélancolique ( $\text{♩}=46$ )

8 1 *p*

2 2 4 *pp très doux* *long* *Enchaînez* *pp*

## V. Bransle de Champagne

Modéré, mais sans lenteur ( $\text{♩}=96$ )

*pp mystérieux* 1 *mf*

8 2 *pp très doux*

15 *pp* *ten.* *pp* *ff sec* **3**

21 *sf* *p* **2** **4** **3**

**5** *mf* **2** **6** *pp très doux*

36 *morendo* *f* **3**

## VI. Sicilienne

Très doucement (♩.=48)

*pp très doux* **3** **1** *pp*

10 **4** **2** *E $\flat$  Cl.* *pp doux*

19 *ten.* *pp très doux*

25 **3** **3** *pp*

32 *pp*

## VII. Carillon

Très vite ( $\text{♩}=92$ )

The musical score for Clarinet in B $\flat$  2, VII. Carillon, is written in 2/4 time with a key signature of one sharp (F#). The tempo is marked "Très vite" with a quarter note equal to 92 beats per minute. The score consists of ten numbered measures, each with specific dynamics and articulations.

- Measure 1:** Starts with a forte (*ff*) dynamic. The melody features eighth and sixteenth notes with accents.
- Measure 2:** Starts with a forte (*f*) dynamic. The melody continues with eighth and sixteenth notes and accents.
- Measure 3:** Features a ten-measure rest (marked "10") followed by a thirteen-measure rest (marked "13").
- Measure 4:** Starts with a forte (*f*) dynamic, followed by a fortissimo (*ff*) dynamic. The melody includes eighth and sixteenth notes with accents.
- Measure 5:** Starts with a fortissimo (*ff*) dynamic. The melody features eighth and sixteenth notes with accents.
- Measure 6:** Starts with a mezzo-forte (*mf*) dynamic. The melody includes eighth and sixteenth notes with accents.
- Measure 7:** Starts with a mezzo-forte (*mf*) dynamic. The melody includes eighth and sixteenth notes with accents.
- Measure 8:** Starts with a mezzo-forte (*mf*) dynamic. The melody includes eighth and sixteenth notes with accents.
- Measure 9:** Starts with a mezzo-forte (*mf*) dynamic. The melody includes eighth and sixteenth notes with accents.
- Measure 10:** Starts with a mezzo-forte (*mf*) dynamic. The melody includes eighth and sixteenth notes with accents.



*SUITE FRANÇAISE**d'après Claude Gervaise*

Francis Poulenc

arr. I. Rae

Gai, mas sans hâte ( $\text{♩}=100$ )

## I. Bransle de Bourgogne

Musical score for I. Bransle de Bourgogne, starting at measure 15. The key signature is one sharp (F#) and the time signature is 2/4. The tempo is marked 'Gai, mas sans hâte' with a quarter note equal to 100 beats per minute. The score includes dynamic markings such as *f*, *mf*, *p*, and *pp*, and articulation like accents. Rehearsal marks 1, 2, 3, 4, and 5 are present. Measure numbers 15, 37, and 48 are indicated at the start of their respective staves.

## II. Pavane

Grave et mélancolique ( $\text{♩}=46$ )

Musical score for II. Pavane, starting at measure 9. The key signature is one sharp (F#) and the time signature is 2/4. The tempo is marked 'Grave et mélancolique' with a quarter note equal to 46 beats per minute. The score includes dynamic markings such as *mf*, *p*, *pp*, and *ppp*, and articulation like accents. Rehearsal marks 1, 2, 3, and 4 are present. Measure numbers 9, 29, and 48 are indicated at the start of their respective staves.

**Franchement animé ♩=138**

## IV. Complainte

## V. Bransle de Champagne

www.merrittshillmusic.com

15 *pp* *ten.* *ff sec* **3**

21 *sf* *p* **2** **4** **3**

**5** *mf* **2** **6** *pp très doux*

36 *morendo* *f* **3**

## VI. Sicilienne

Très doucement (♩.=48)

*pp très doux* **3** **1**

10 *pp doux* **4** **2** Fig. 1

19 *ten.* *pp très doux*

25 **3** **3** *pp*

32 *pp*

## VII. Carillon

Très vite ( $\text{♩}=92$ )

The musical score for "VII. Carillon" is written for Clarinet in B $\flat$  3. It is in 2/4 time, key of D major, and marked "Très vite" with a tempo of quarter note = 92. The score consists of ten numbered measures (1-10) with various dynamics and articulations.

- Measure 1:** Starts with a forte (*ff*) dynamic. The melody is a series of eighth notes with accents.
- Measure 2:** Starts with a forte (*f*) dynamic. The melody continues with eighth notes and accents.
- Measure 3:** Contains a ten-measure rest (labeled "10") followed by a thirteen-measure rest (labeled "13").
- Measure 4:** Starts with a forte (*f*) dynamic, followed by a fortissimo (*ff*) dynamic. The melody is a series of eighth notes with accents.
- Measure 5:** Starts with a fortissimo (*ff*) dynamic. The melody is a series of eighth notes with accents.
- Measure 6:** Starts with a mezzo-forte (*mf*) dynamic. The melody is a series of eighth notes with accents.
- Measure 7:** Starts with a mezzo-forte (*mf*) dynamic. The melody is a series of eighth notes with accents.
- Measure 8:** Starts with a mezzo-forte (*mf*) dynamic. The melody is a series of eighth notes with accents.
- Measure 9:** Starts with a mezzo-forte (*mf*) dynamic. The melody is a series of eighth notes with accents.
- Measure 10:** Starts with a mezzo-forte (*mf*) dynamic. The melody is a series of eighth notes with accents.

The score includes various dynamics: *ff* (fortissimo), *f* (forte), *mf* (mezzo-forte), and *fff* (fortississimo). It also includes articulations such as accents, slurs, and a "Solo" marking. The tempo is marked "Très vite" with a tempo of quarter note = 92.

*SUITE FRANÇAISE**d'après Claude Gervaise*

Francis Poulenc

arr. I. Rae

Gai, mas sans hâte ( $\text{♩}=100$ )

## I. Bransle de Bourgogne

Measures 1-47 of "I. Bransle de Bourgogne". The score is in 2/4 time with a key signature of three sharps (F#, C#, G#). It features a lively tempo of 100 beats per minute. The music is characterized by frequent eighth and sixteenth notes, often beamed together. Dynamics include *f* (forte), *mf* (mezzo-forte), and *p* (piano). Fingerings are indicated by numbers 1-5 in boxes. Measure numbers 15, 38, and 47 are marked at the beginning of their respective staves.

Grave et mélancolique ( $\text{♩}=46$ )

## II. Pavane

Measures 1-50 of "II. Pavane". The score is in 2/2 time with a key signature of three sharps (F#, C#, G#). It features a slow tempo of 46 beats per minute. The music is characterized by wide intervals, often spanning an octave, and a melancholic mood. Dynamics include *mf* (mezzo-forte), *p* (piano), *pp* (pianissimo), and *ppp* (pianississimo). Fingerings are indicated by numbers 1-5 in boxes. Measure numbers 8, 15, 29, 39, and 49 are marked at the beginning of their respective staves.

## III. Petite Marche Militaire

Franchement animé  $\text{♩} = 138$ 

Musical score for 'Petite Marche Militaire' in 2/4 time, key of D major. The score consists of five staves of music. The first staff has a 12-measure rest, followed by a first ending (1) of 12 measures and a second ending (2) of 2 measures. The second staff starts at measure 28, has a 5-measure rest, followed by a third ending (3) of 4 measures, and then a 4-measure rest. The third staff starts at measure 55, has a 7-measure rest, followed by a 5-measure rest. The fourth staff starts at measure 63, has a 4-measure rest, followed by a 4-measure rest. The fifth staff has a 4-measure rest, followed by a 4-measure rest. Dynamics include *f*, *mf*, *f sec*, and *ff sec*. There are also accents and slurs throughout the piece.

## IV. Complainte

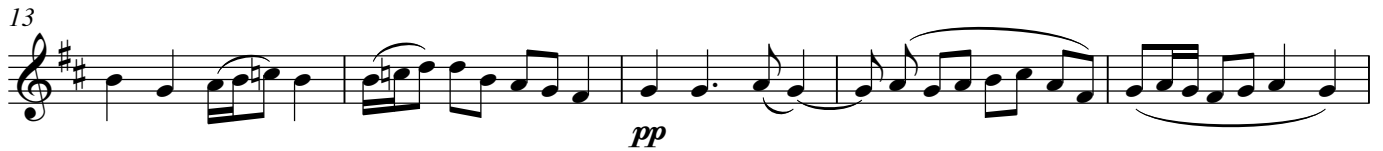
Calme et mélancolique  $\text{♩} = 46$ 

Musical score for 'Complainte' in 6/8 time, key of D major. The score consists of two staves of music. The first staff has an 8-measure rest, followed by a first ending (1) of 8 measures. The second staff starts at measure 13, has a 4-measure rest, followed by a second ending (2) of 2 measures, and then a 4-measure rest. The third staff has a 4-measure rest, followed by a 4-measure rest. Dynamics include *p*, *pp*, and *pp très doux*. There are also slurs and a 'long' marking at the end.

## V. Bransle de Champagne

Modéré, mais sans lenteur  $\text{♩} = 96$ 

Musical score for 'Bransle de Champagne' in 4/4 time, key of D major. The score consists of two staves of music. The first staff has a 2-measure rest, followed by a 2-measure rest. The second staff starts at measure 1, has a 2-measure rest, followed by a second ending (2) of 2 measures. Dynamics include *pp mystérieux* and *pp très doux*. There are also slurs and a 'long' marking at the end.



## VI. Sicilienne

Très doucement (♩.=48)



## VII. Carillon

Très vite ( $\text{♩}=92$ )

14

34

62

74

86

98

111

122

*ff*

*f*

*mf*

*ff*

*sf*

*sf*

*sf*

*sf*

*ff*

*mf*

*mf sec*

*ff*

*f*

*sf*

*sf*

*sf*

*sf*

*ff*

*ff*

*fff*

1

2

3

4

5

6

7

8

9

10

10

3

2

3

2

6

9

Solo



Bass Clarinet in B $\flat$

# SUITE FRANÇAISE

d'après Claude Gervaise

Francis Poulenc

arr. I. Rae

Gai, mas sans hâte (♩=100)

## I. Bransle de Bourgogne

First system: Treble clef, key of D major (F#), 2/4 time. Measures 1-8. Rehearsal mark 1 at measure 1. Dynamics: *f* at measure 5. Fingerings: 4, 2, 2, 4.

Second system: Measures 9-16. Rehearsal mark 2 at measure 16. Dynamics: *mf* at measure 9, *f* at measure 15.

Third system: Measures 17-26. Rehearsal mark 3 at measure 20. Dynamics: *f* at measure 17, *p* at measure 21, *mf* at measure 25.

Fourth system: Measures 27-38. Rehearsal mark 4 at measure 30. Dynamics: *f* at measure 27, *p* at measure 32.

Fifth system: Measures 39-48. Rehearsal mark 5 at measure 39. Dynamics: *mf* at measure 39, *f* at measure 47.

## II. Pavane

Grave et mélancolique (♩=46)

First system: Treble clef, key of D major (F#), 3/2 time. Measures 1-8. Dynamics: *mf* at measure 1, *p* at measure 5.

Second system: Measures 9-16. Dynamics: *mf* at measure 9, *pp* at measure 15.

Third system: Measures 17-26. Rehearsal mark 1 at measure 17, 2 at measure 20. Dynamics: *ppp* at measure 20.

Fourth system: Measures 27-32. Rehearsal mark 3 at measure 27. Dynamics: *p* at measure 27.

Fifth system: Measures 33-40. Rehearsal mark 4 at measure 33. Dynamics: *pp* at measure 33, *p* at measure 37, *pp* at measure 39.

Copyright © 1950 Éditions Durand - Paris

All rights reserved

Reproduced by kind permission of MGB Hal Leonard s.r.l.

[www.merrittshillmusic.com](http://www.merrittshillmusic.com)

## III. Petite Marche Militaire

Franchement animé  $\text{♩} = 138$

12 12

1 2

31 5 3 4 4 7

*f sec*

*mf* *f*

52 5

61 *f* *fff sec*

## IV. Complainte

Calmes et mélancolique  $\text{♩} = 46$

8

1

13 4 2 4

*p*

*pp très doux*

long Enchaînez

*pp*

## V. Bransle de Champagne

Modéré, mais sans lenteur  $\text{♩} = 96$

2 1

*pp mystérieux* *mf*

8 2 2

*pp très doux*

15 *pp* *ten.* *pp* *fff sec*

21 2 4 3

*fff sec* *p*

5 2 6

*mf* *pp très doux*

36 *morendo* *f* *pp*

## VI. Sicilienne

**Très doucement (♩.=48)**

Très doucement (♩.=48)

VI. Siemienne

*pp* très doux

10

*pp* très doux

23

*pp*

31

*pp*

## VII. Carillon

**Très vite (♩=92)**

**Tres vite** (♩=92)

10 1 12 2 10 3

*mf*

38 3 3 4 9

*mf*

5 6 5

*sf* *sf* *sf* *sf* *ff*

71 Solo

*mf* *mf sec*

81 2 2

8 12

*ff*

9 6

*sf* *sf* *sf* *sf* *ff*

10 9 12

*ff* *fff*

Contra-alto  
Clarinet in Eb

# SUITE FRANÇAISE

d'après Claude Gervaise

Francis Poulenc

arr. I. Rae

Gai, mas sans hâte (♩=100)

## I. Bransle de Bourgogne

Musical score for I. Bransle de Bourgogne. The score is written for a single staff in treble clef with a key signature of three sharps (F#, C#, G#) and a 2/4 time signature. The tempo is marked 'Gai, mas sans hâte (♩=100)'. The score consists of four lines of music. The first line has measures 1-4, 5-6, 7-8, and 9-12. The second line has measures 13-16, 17-20, 21-24, and 25-28. The third line has measures 29-32, 33-36, 37-40, and 41-44. The fourth line has measures 45-48, 49-52, 53-56, and 57-60. Dynamics include *f* (forte) and *mf* (mezzo-forte). There are various articulations such as accents and slurs. Measure numbers 1, 2, 3, 4, 5, 6, 8, 12, 16, 20, 24, 28, 32, 36, 40, 44, 48, 52, 56, and 60 are indicated in boxes above the staff.

## II. Pavane

Grave et mélancolique (♩=46)

Musical score for II. Pavane. The score is written for a single staff in treble clef with a key signature of three sharps (F#, C#, G#) and a 2/2 time signature. The tempo is marked 'Grave et mélancolique (♩=46)'. The score consists of two lines of music. The first line has measures 1-8, 9-16, and 17-24. The second line has measures 25-32, 33-40, 41-48, and 49-56. Dynamics include *ppp* (pianissimo) and *8<sup>vb</sup>* (eight times the volume). There are various articulations such as slurs and accents. Measure numbers 1, 2, 3, 4, 8, 12, 16, 20, 24, 28, 32, 36, 40, 44, 48, 52, 56, and 60 are indicated in boxes above the staff.

## III. Petite Marche Militaire

Franchement animé ♩=138

Musical score for III. Petite Marche Militaire. The score is written for a single staff in treble clef with a key signature of three sharps (F#, C#, G#) and a 2/4 time signature. The tempo is marked 'Franchement animé ♩=138'. The score consists of three lines of music. The first line has measures 1-12, 13-24, and 25-36. The second line has measures 37-48, 49-60, 61-72, and 73-84. The third line has measures 85-96, 97-108, 109-120, and 121-132. Dynamics include *f* (forte) and *sff sec* (sforzando, staccato). There are various articulations such as slurs and accents. Measure numbers 1, 2, 3, 4, 6, 7, 8, 12, 16, 20, 24, 28, 32, 36, 40, 44, 48, 52, 56, 60, 64, 68, 72, 76, 80, 84, 88, 92, 96, 100, 104, 108, 112, 116, 120, 124, 128, 132, and 136 are indicated in boxes above the staff.

## IV. Complainte

Calme et mélancolique (♩=46)

Musical score for IV. Complainte. The score is written for a single staff in treble clef with a key signature of three sharps (F#, C#, G#) and a 6/8 time signature. The tempo is marked 'Calme et mélancolique (♩=46)'. The score consists of two lines of music. The first line has measures 1-8, 9-16, and 17-24. The second line has measures 25-32, 33-40, 41-48, and 49-56. Dynamics include *p* (piano) and *pp* (pianissimo). There are various articulations such as slurs and accents. Measure numbers 1, 2, 3, 4, 5, 6, 8, 12, 16, 20, 24, 28, 32, 36, 40, 44, 48, 52, 56, 60, 64, 68, 72, 76, 80, 84, 88, 92, 96, 100, 104, 108, 112, 116, 120, 124, 128, 132, 136, 140, 144, 148, 152, 156, 160, 164, 168, 172, 176, 180, 184, 188, 192, 196, 200, 204, 208, 212, 216, 220, 224, 228, 232, 236, 240, 244, 248, 252, 256, 260, 264, 268, 272, 276, 280, 284, 288, 292, 296, 300, 304, 308, 312, 316, 320, 324, 328, 332, 336, 340, 344, 348, 352, 356, 360, 364, 368, 372, 376, 380, 384, 388, 392, 396, 400, 404, 408, 412, 416, 420, 424, 428, 432, 436, 440, 444, 448, 452, 456, 460, 464, 468, 472, 476, 480, 484, 488, 492, 496, 500, 504, 508, 512, 516, 520, 524, 528, 532, 536, 540, 544, 548, 552, 556, 560, 564, 568, 572, 576, 580, 584, 588, 592, 596, 600, 604, 608, 612, 616, 620, 624, 628, 632, 636, 640, 644, 648, 652, 656, 660, 664, 668, 672, 676, 680, 684, 688, 692, 696, 700, 704, 708, 712, 716, 720, 724, 728, 732, 736, 740, 744, 748, 752, 756, 760, 764, 768, 772, 776, 780, 784, 788, 792, 796, 800, 804, 808, 812, 816, 820, 824, 828, 832, 836, 840, 844, 848, 852, 856, 860, 864, 868, 872, 876, 880, 884, 888, 892, 896, 900, 904, 908, 912, 916, 920, 924, 928, 932, 936, 940, 944, 948, 952, 956, 960, 964, 968, 972, 976, 980, 984, 988, 992, 996, 1000 are indicated in boxes above the staff.

Copyright © 1950 Éditions Durand - Paris

All rights reserved

Reproduced by kind permission of MGB Hal Leonard s.r.l.

www.merittshillmusic.com

## V. Bransle de Champagne

Modéré, mais sans lenteur (♩=96)

6 1 4

2

18 *pp* très doux (4) 3 4 4 5 5 4

*cresc.* *ff* sec (4) 2

*pp* très doux *cresc.* *f* *sf* sec

Très doucement (♩=48)

## VI. Sicilienne

8 1 4

*mp* *cresc.* *f*

2 4 8 3 3

32 *pp*

## VII. Carillon

Très vite (♩=92)

10 1 6 2 10

*f* 8<sup>va</sup> 3 5 8 4 9 5 4

62 6 10 7 16 8 16

108 *ff* 9 4

121 *f* 6 10 12 *ff* *fff*

Contrabass  
Clarinet in Bb

# SUITE FRANÇAISE

d'après Claude Gervaise

Francis Poulenc

arr. I. Rae

Gai, mas sans hâte (♩=100)

## I. Bransle de Bourgogne

Musical score for I. Bransle de Bourgogne. The score is written for Contrabass and Clarinet in Bb. It consists of four staves of music. The first staff begins with a key signature of one sharp (F#) and a time signature of 2/4. The tempo is marked 'Gai, mas sans hâte (♩=100)'. The score includes various musical notations such as rests, notes, and dynamic markings like *f* and *mf*. Measure numbers 1, 2, 3, 4, 5, 8, and 39 are indicated. The piece concludes with a double bar line.

## II. Pavane

Grave et mélancolique (♩=46)

Musical score for II. Pavane. The score is written for Contrabass and Clarinet in Bb. It consists of two staves of music. The key signature is one sharp (F#) and the time signature is 2/2. The tempo is marked 'Grave et mélancolique (♩=46)'. The score includes various musical notations such as rests, notes, and dynamic markings like *ppp*. Measure numbers 1, 2, 3, 8, 12, and 16 are indicated. The piece concludes with a double bar line.

## III. Petite Marche Militaire

Franchement animé ♩=138

Musical score for III. Petite Marche Militaire. The score is written for Contrabass and Clarinet in Bb. It consists of three staves of music. The key signature is one sharp (F#) and the time signature is 2/4. The tempo is marked 'Franchement animé ♩=138'. The score includes various musical notations such as rests, notes, and dynamic markings like *f* and *sff sec*. Measure numbers 1, 2, 3, 4, 5, 6, 7, 8, 12, and 35 are indicated. The piece concludes with a double bar line.

## IV. Complainte

Calme et mélancolique (♩=46)

Musical score for IV. Complainte. The score is written for Contrabass and Clarinet in Bb. It consists of two staves of music. The key signature is one sharp (F#) and the time signature is 6/8. The tempo is marked 'Calme et mélancolique (♩=46)'. The score includes various musical notations such as rests, notes, and dynamic markings like *p* and *pp*. Measure numbers 1, 2, 4, 5, and 8 are indicated. The piece concludes with a double bar line. The word 'Enchaînez' is written above the final measure.

Copyright © 1950 Éditions Durand - Paris

All rights reserved

Reproduced by kind permission of MGB Hal Leonard s.r.l.

www.merittshillmusic.com

## V. Bransle de Champagne

Modéré, mais sans lenteur (♩=96)

6 1 4 2

*pp* très doux

14 *cresc.*

3 4 4 5 5 4 6

*ff* sec *pp* très doux

36 *cresc.* *f* *fff* sec 2

## VI. Sicilienne

Très doucement (♩=48)

8 1 4

*mp* *cresc.*

16 2 4 8 3 3

*f*

32 *pp*

## VII. Carillon

Très vite (♩=92)

10 1 6 2 10

*f*

3 5 8 4 9 5 4

*f*

62 6 10 7 16 8 16

108 *ff* 9 4

121 *f* 6 10 12 *ff* *fff*

## Alto Saxophone 1

*SUITE FRANÇAISE*

*d'après Claude Gervaise*

Francis Poulenc

*arr. I. Rae*

## I. Bransle de Bourgogne

**Gai, mas sans hâte (♩=100)**

1

2

3

4

5

6

7

8

9

10

11

12

13

14

15

16

17

18

19

20

21

22

23

24

25

26

27

28

29

30

31

32

33

34

35

36

37

38

39

40

41

42

43

44

45

46

47

48

49

50

51

52

53

54

55

56

57

58

59

60

61

62

63

64

65

66

67

68

69

70

71

72

73

74

75

76

77

78

79

80

81

82

83

84

85

86

87

88

89

90

91

92

93

94

95

96

97

98

99

100

101

102

103

104

105

106

107

108

109

110

111

112

113

114

115

116

117

118

119

120

121

122

123

124

125

126

127

128

129

130

131

132

133

134

135

136

137

138

139

140

141

142

143

144

145

146

147

148

149

150

151

152

153

154

155

156

157

158

159

160

161

162

163

164

165

166

167

168

169

170

171

172

173

174

175

176

177

178

179

180

181

182

183

184

185

186

187

188

189

190

191

192

193

194

195

196

197

198

199

200

201

202

203

204

205

206

207

208

209

210

211

212

213

214

215

216

217

218

219

220

221

222

223

224

225

226

227

228

229

230

231

232

233

234

235

236

237

238

239

240

241

242

243

244

245

246

247

248

249

250

251

252

253

254

255

256

257

258

259

260

261

262

263

264

265

266

267

268

269

270

271

272

273

274

275

276

277

278

279

280

281

282

283

284

285

286

287

288

289

290

291

292

293

294

295

296

297

298

299

300

301

302

303

304

305

306

307

308

309

310

311

312

313

314

315

316

317

318

319

320

321

322

323

324

325

326

327

328

329

330

331

332

333

334

335

336

337

338

339

340

341

342

343

344

345

346

347

348

349

350

351

352

353

354

355

356

357

358

359

360

361

362

363

364

365

366

367

368

369

370

371

372

373

374

375

376

377

378

379

380

381

382

383

384

385

386

387

388

389

390

391

392

393

394

395

396

397

398

399

400

401

402

403

404

405

406

407

408

409

410

411

412

413

414

415

416

417

418

419

420

421

422

423

424

425

426

427

428

429

430

431

432

433

434

435

436

437

438

439

440

441

442

443

444

445

446

447

448

449

## II. Pavane

### Grave et mélancolique (♩=46)

Copyright © 1950 Éditions Durand - Paris

All rights reserved

Reproduced by kind permission of MGB Hal Leonard s.r.l.

www.merrittshillmusic.com



### III. Petite Marche Militaire

Franchement animé  $\text{♩}=138$

12 1 12 2 11

3 4 4 7

*mf*

51 *f*

5 6 *f* *sff sec*

### IV. Complainte

Calme et mélancolique ( $\text{♩}=46$ )

1. Solo

*p*

1 4 2 2

*p plaintif*

20 *p* *pp* *long Enchaînez*

### V. Bransle de Champagne

Modéré, mais sans lenteur ( $\text{♩}=96$ )

1 4 2

6 4 *pp très doux*

13 *pp*

18 2 3 2 4 5

*ff sec* *f* *5*

5 4 6 2

*pp senza vib.* *morendo* *f* *sff sec*

## VI. Sicilienne

Très doucement (♩.=48)

8 3 1

13 *cresc.* *f* 2 4 3

24 *pp* *très doux* 3 9

*mp*

## VII. Carillon

Très vite (♩.=92)

1 12

*ff*

2 *ff*

3 2 *mf* 8 *ff* 4 *ff*

51 4 *ff* *très sec*

64 10 *f* *sec* 2

84 6 *ff* 5

102 12 *ff* *très sec* 4 6

10 8 *ff* *fff*

*SUITE FRANÇAISE**d'après Claude Gervaise*

Francis Poulenc

arr. I. Rae

Gai, mas sans hâte (♩=100)

## I. Bransle de Bourgogne

4 10 3 1

21 3 4 2

31 6 3 3

4 6 4 5 3

58 3 4

*p* *f* *mf* *f* *p*

## II. Pavane

Grave et mélancolique (♩=46)

16 8 2 1

29 3 2 3

39 8 4 5

*ppp* *p* *pp*

### III. Petite Marche Militaire

Franchement animé  $\text{♩}=138$

12 1 12 2 11

3 4 4 7

*mf*

51 *f*

5 6 *f* *fff sec*

### IV. Complainte

Calme et mélancolique ( $\text{♩}=46$ )

8 1 4 *p plaintif*

16 2 2 5 1. *long Enchaînez pp*

### V. Bransle de Champagne

Modéré, mais sans lenteur ( $\text{♩}=96$ )

6 1 4 2 *pp très doux*

13 *pp*

18 2 3 *ff sec* *f* 5 2 4 5

5 4 6 *pp senza vib.* *morendo* *f* *fff sec* 2

## VI. Sicilienne

Très doucement (♩=48)

1. *mp* *cresc.* *mf*

*f* *pp*

*très doux*

## VII. Carillon

Très vite (♩=92)

*ff*

*ff*

*ff* *ff*

*ff* *très sec*

*f sec*

*ff*

*ff* *très sec*

*ff* *fff*

Tenor Saxophone

# SUITE FRANÇAISE

d'après Claude Gervaise

## I. Bransle de Bourgogne

Francis Poulenc

arr. I. Rae

Gai, mas sans hâte (♩=100)

Measures 1-23 of the Bransle de Bourgogne. The score is in 2/4 time with a key signature of one sharp (F#). It features a lively melody with various rests and dynamic markings. Measure numbers 4, 10, 1, 3, 23, 2, 4, 3, 6, 39, 4, 6, 4, 5, 3, 4 are indicated above the staff. Dynamics include *p*, *f*, and *p*.

Grave et mélancolique (♩=46)

## II. Pavane

Measures 1-39 of the Pavane. The score is in 2/2 time with a key signature of one sharp (F#). It features a slow, melancholic melody with long notes and rests. Measure numbers 12, 1, 8, 2, 30, 3, 2, 3, 39, 8, 4, 5 are indicated above the staff. Dynamics include *pp*, *ppp*, *p*, and *pp*.

## III. Petite Marche Militaire

Franchement animé ♩=138

Measures 1-58 of the Petite Marche Militaire. The score is in 2/4 time with a key signature of one sharp (F#). It features a fast, lively melody with various rests and dynamic markings. Measure numbers 12, 1, 12, 2, 3, 7, 4, 8, 58, 5, 6 are indicated above the staff. Dynamics include *f* and *sf* *sec*.

## IV. Complainte

Calme et mélancolique (♩=46)

Measures 1-15 of the piece "IV. Complainte". The music is in 6/8 time, key of D major. It features a calm and melancholic mood. The score includes fingerings (8, 1, 4, 2, 5) and dynamics (*p* plaintif, *pp*). The piece concludes with the instruction "Enchaînez".

## V. Bransle de Champagne

Modéré, mais sans lenteur (♩=96)

Measures 1-22 of the piece "V. Bransle de Champagne". The music is in 4/4 time, key of D major. It has a moderate tempo but without slowing down. The score includes fingerings (1, 4, 2, 2, 3, 2, 4, 3, 5, 4, 6) and dynamics (*pp* mystérieux, *pp* très doux, *f*, *p*, *pp* senza vib., *morendo*, *f*, *fff* sec). The piece concludes with a double bar line.

## VI. Sicilienne

Très doucement (♩=48)

Measures 1-25 of the piece "VI. Sicilienne". The music is in 6/8 time, key of D major. It is very slow and gentle. The score includes fingerings (1, 4, 2, 4, 3, 9) and dynamics (*mp*, *cresc.*, *f*, *pp* très doux). The piece concludes with a double bar line.

## VII. Carillon

Très vite (♩=92)

10 1 12 2 *ff*

28 3 3 *mf* *ff*

40 8 4 9 5 *sf* *sf* *sf* *sf*

62 6 10 7 2 *ff* *f sec*

80 2 6 8 22

9 *sf* *sf* *sf* *sf* *ff* 6

10 9 *ff* *fff*



**SUITE FRANÇAISE***d'après Claude Gervaise*

Francis Poulenc

*arr. I. Rae***Gai, mas sans hâte** (♩=100)**I. Bransle de Bourgogne**

1 4 10 6

*p*

23 2 4 3 3 6

*f sf*

39 4 6 4

*f*

53 5 6 4

*p f*

**II. Pavane****Grave et mélancolique** (♩=46)

1 16 8 2

*ppp*

29 3 3 12 4 9

*ppp*

**III. Petite Marche Militaire****Franchement animé** ♩=138

1 12 12 11 3 7

4 8

*f*

57 5 6

*f sff sec*

Copyright © 1950 Éditions Durand - Paris

All rights reserved

Reproduced by kind permission of MGB Hal Leonard s.r.l.

[www.merittshillmusic.com](http://www.merittshillmusic.com)

## IV. Complainte

Calme et mélancolique (♩=46)

1 8 4

*pp* plaintif

2 2 5

*pp* Enchaînez

## V. Bransle de Champagne

Modéré, mais sans lenteur (♩=96)

1 6 4 2

*pp* très doux

15

*cresc.*

3 5 4 5 4 6

*pp* très doux

36

*morendo* *f* *sff* *sec* 2

## VI. Sicilienne

Très doucement (♩=48)

1 8 3

*mp* *cresc.*

15

*f* 4 3

*pp* très doux

26

3 9

## VII. Carillon

Très vite (♩=92)

17

27

41

79

101

9

10

*ff*

*f*

*ff*

*f*

*mf sec*

*ff*

*f*

*ff*

*ff*

*ff*

Horn in F 1

# SUITE FRANÇAISE

d'après Claude Gervaise

Francis Poulenc

arr. I. Rae

## I. Bransle de Bourgogne

Gai, mas sans hâte (♩=100)

1

2

3

4

5

*p* *mp* *mf* *f* *sf*

## II. Pavane

Grave et mélancolique (♩=46)

1

2

3

4

*ppp* *mp* *plaintif* *ppp* *mp* *p* *pp*

Copyright © 1950 Éditions Durand - Paris

All rights reserved

Reproduced by kind permission of MGB Hal Leonard s.r.l.

[www.merittshillmusic.com](http://www.merittshillmusic.com)

### III. Petite Marche Militaire

Franchement animé ♩=138

*f* *sec*

11

19

*ten.*

2

11

3

4

7

*mf*

53

(3) (4) (5) (6) (7)

5

*mf*

62

*f*

*fff* *sec*

### IV. Complainte

Calme et mélancolique ♩=46

TACET

### V. Bransle de Champagne

Modéré, mais sans lenteur ♩=96

6

2

*mf*

2

*pp* *très doux*

*pp*

17 *ten.* *pp* *ff<sup>sec</sup>* **3**

23 *Soli* *mf* *p* *mf* **4** **2**

**5** **2** *mf* **6** *pp* *très doux*

36 *morendo* *f* *pp*

## VI. Sicilienne

Très doucement (♩.=48)

**3** *pp* *très doux*

**1** **3** *mp* *cresc.* *f*

**2** *pp* *doux* *ten.* **3** *pp*

25 *très doux* **3** **9**

## VII. Carillon

Très vite (♩=92)

ff

1

f

21

2

5

3

5

ff

38

ff

mf

f

4

5

4

ff

62

6

10

7

ff très sec

mp sec

80

4

8

5

ff

f

105

9

4

118

6

10

ff très sec

ff

132

4

fff

Horn in F 2

# SUITE FRANÇAISE

d'après Claude Gervaise

Francis Poulenc

arr. I. Rae

## I. Bransle de Bourgogne

Gai, mas sans hâte (♩=100)

Musical score for I. Bransle de Bourgogne, Horn in F 2. The score is in 2/4 time and consists of five staves. It begins with a key signature of one sharp (F#) and a tempo marking of 100 beats per minute. The first staff contains measures 1-20, with a 4-measure rest, an 8-measure rest, and a first ending bracket. The second staff contains measures 21-30, with a second ending bracket. The third staff contains measures 31-40, with a 2-measure rest, a 2-measure rest, and a 4-measure rest. The fourth staff contains measures 41-50, with a 4-measure rest and a 4-measure rest. The fifth staff contains measures 51-60, with a 4-measure rest and a 4-measure rest. Dynamics include *p*, *mp*, *mf*, *f*, and *sf*. Rehearsal marks 1 through 5 are indicated.

## II. Pavane

Grave et mélancolique (♩=46)

Musical score for II. Pavane, Horn in F 2. The score is in 2/2 time and consists of four staves. It begins with a key signature of one sharp (F#) and a tempo marking of 46 beats per minute. The first staff contains measures 1-27, with a 16-measure rest and an 8-measure rest. The second staff contains measures 28-33, with a 2-measure rest. The third staff contains measures 34-42, with a 4-measure rest. The fourth staff contains measures 43-50, with a 4-measure rest and a 4-measure rest. Dynamics include *ppp*, *mp*, and *p*. Rehearsal marks 1 through 4 are indicated. The word "Soli" is written above measure 28, and "plaintif" is written below measure 30.

Copyright © 1950 Éditions Durand - Paris

All rights reserved

Reproduced by kind permission of MGB Hal Leonard s.r.l.

[www.merittshillmusic.com](http://www.merittshillmusic.com)



### III. Petite Marche Militaire

Franchement animé ♩=138

*f sec*

11 1

19 2 *ten.* **11**

3 4 7 *mf* *f*

53 (3) (4) (5) (6) (7) 5 *mf*

62 *f* *sff sec*

### IV. Complainte

Calme et mélancolique ♩=46

**TACET**

### V. Bransle de Champagne

Modéré, mais sans lenteur ♩=96

**6** **2** *mf*

2 *pp* *très doux* *pp*

16 *ten.* **3** *pp* *ff* *sec*

22 **2** **4** **2** *p*

29 **5** **2** *mf* *mf* **6** *pp* *très doux*

36 *morendo* *f* *pp*

## VI. Sicilienne

Très doucement (♩.=48)

**3** **1** **3** *pp* *très doux*

12 *mp* *cresc.* *f* **2** **4** **3**

24 *pp* *très doux* **3** **9**

## VII. Carillon

Très vite (♩=92)

ff

1

f

21

2

5

ff

3

5

ff

5

f

4

ff

5

4

62

6

10

7

ff très sec

mp sec

80

4

8

5

ff

f

105

9

4

118

6

10

ff très sec

ff

132

4

fff

Trumpet in B♭ 1

# SUITE FRANÇAISE

d'après Claude Gervaise

## I. Bransle de Bourgogne

Francis Poulenc

arr. I. Rae

Gai, mas sans hâte (♩=100)

Measures 1-58 of the Bransle de Bourgogne. The score is in 2/4 time with a key signature of one sharp (F#). It features a lively, dance-like melody with various rests and dynamic markings. Measure numbers 4, 12, 22, 35, 49, and 58 are indicated at the start of their respective lines. Rehearsal marks 1 through 5 are placed above the staff. Dynamic markings include *f* (forte) at measures 12, 22, 49, and 58.

## II. Pavane

Grave et mélancolique (♩=46)

Measures 1-39 of the Pavane. The score is in 3/2 time with a key signature of one sharp (F#). It features a slow, melancholic melody with long rests and dynamic markings. Measure numbers 16, 29, and 39 are indicated at the start of their respective lines. Rehearsal marks 1 through 4 are placed above the staff. Dynamic markings include *ppp* (pianississimo) at measure 16 and *mp* (mezzo-piano) at measure 39.

## III. Petite Marche Militaire

Franchement animé (♩=138)

1 12 2 6

33 3 7 4

48 (4)

5 6

*f* *p bien sec* *sff sec*

## IV. Complainte

Calme et mélancolique (♩=46)

TACET

## V. Bransle de Champagne

Modéré, mais sans lenteur (♩=96)

1 2

2 4

3 4

29 5 2 6

35 2

*mf* *mp* *pp* *ff* *Soli* *mf* *morendo* *sff sec*

Très doucement (♩=48)

## VI. Sicilienne

1 3

8 3

15 2 4 8 3 9

*mp* *cresc.*

*f*

Très vite (♩=92)

## VII. Carillon

*ff*

1 6 2 10 3 5

*f*

38 8 4

*ff* *ff*

54 5 4

*ff* *très sec*

6 10 7 2 2 2

*f* *sec*

87 2 8 5

*ff*

100 6

*f*

9 4 6 10

*ff* *très sec* *ff*

130 6

*ff*

Trumpet in B♭ 2

# SUITE FRANÇAISE

d'après Claude Gervaise

## I. Bransle de Bourgogne

Francis Poulenc

arr. I. Rae

Gai, mas sans hâte (♩=100)

Measures 1-20 of the Bransle de Bourgogne. The score is in 2/4 time with a key signature of one sharp (F#). It features a lively melody with various rests and dynamic markings. Measure numbers 4, 12, 21, 27, 39, and 5 are indicated above the staff. Dynamics include *f* (forte) and *ppp* (pianissimo). The first ending is marked with a box containing the number 1.

## II. Pavane

Grave et mélancolique (♩=46)

Measures 1-38 of the Pavane. The score is in 2/2 time with a key signature of one sharp (F#). It features a slow, melancholic melody with long rests and dynamic markings. Measure numbers 16, 29, and 39 are indicated above the staff. Dynamics include *ppp* (pianissimo) and *mp* (mezzo-piano). The first ending is marked with a box containing the number 1.

Copyright © 1950 Éditions Durand - Paris

All rights reserved

Reproduced by kind permission of MGB Hal Leonard s.r.l.

[www.merittshillmusic.com](http://www.merittshillmusic.com)

## III. Petite Marche Militaire

Franchement animé (♩=138)

12 12 6

33 7 4

48 (4)

5 6

*f* *p bien sec* *sf sec*

## IV. Complainte

Calme et mélancolique (♩=46)

TACET

## V. Bransle de Champagne

Modéré, mais sans lenteur (♩=96)

6 2

29 2 6

35 2

*mf* *mp* *pp* *ff* *mf* *mp* *sf sec*

morendo



Très doucement (♩=48)

## VI. Sicilienne

8 3 1 3 2 3 4 5 6 7 8 9 10 11 12 13 14 15

*mp* *cresc.*

*f*

Très vite (♩=92)

## VII. Carillon

*ff*

1 6 2 10 3 5

38 8 4 *ff*

54 5 4 *ff* *très sec*

6 10 7 2 2 2 *f* *sec*

86 2 8 5 *ff*

100 6 *f*

9 4 6 10 *ff* *très sec*

130 6 *ff*

# SUITE FRANÇAISE

d'après Claude Gervaise

## I. Bransle de Bourgogne

Francis Poulenc

arr. I. Rae

Gai, mas sans hâte (♩=100)

Measures 1-51 of the Bransle de Bourgogne. The score is in 3/4 time with a key signature of one sharp (F#). It features various rhythmic patterns, including eighth and sixteenth notes, and rests. Fingerings are indicated by numbers 1-5 in boxes. Dynamics include *p* (piano) and *f* (forte). Measure numbers 22, 30, 38, 46, and 51 are marked at the start of their respective lines.

## II. Pavane

Grave et mélancolique (♩=46)

Measures 1-42 of the Pavane. The score is in 3/2 time with a key signature of one sharp (F#). It features a slower tempo with a mix of half and quarter notes. Fingerings are indicated by numbers 1-5 in boxes. Dynamics include *mf* (mezzo-forte), *p* (piano), and *ppp* (pianissimo). Measure numbers 22, 30, and 42 are marked at the start of their respective lines.

## III. Petite Marche Militaire

Franchement animé (♩=138)

12 12 2

29 3 7

4 8 f

58 5 6 f sff sec

## IV. Complainte

Calme et mélancolique (♩=46)

TACET

## V. Bransle de Champagne

Modéré, mais sans lenteur (♩=96)

2 pp mystérieux mf

1 4 2 pp très doux

15 pp ff

21 Soli mf p

28 5 4 6 mf pp très doux

36 morendo sff sec

Très doucement (♩=48)

## VI. Sicilienne

8 1 3 *tous*  
*mp* *cresc.*

15 2 4 8 3 9  
*f*

Très vite (♩=92)

## VII. Carillon

10 1 *f*

17 2 5 *ff*

30 3 5 *ff*

4 9 5 4 *ff très sec* 6 10

7 *mp sec* 6

90 2 8 10 *f*

108 9 4 *ff très sec*

119 6 10 *ff*

132 6 *fff*

# SUITE FRANÇAISE

d'après Claude Gervaise

## I. Bransle de Bourgogne

Francis Poulenc

arr. I. Rae

Gai, mas sans hâte (♩=100)

Measures 1-44 of the first movement. The score is in 2/4 time with a key signature of one sharp (F#). It features various rhythmic patterns and dynamics. Measure numbers 4, 8, 22, 33, 45 are indicated above the staff. Fingerings 1, 2, 3, 4, 5 are shown in boxes. Dynamics include *p*, *f*, and *mf*.

## II. Pavane

Grave et mélancolique (♩=46)

Measures 1-42 of the second movement. The score is in 3/2 time with a key signature of one sharp (F#). It features a slower tempo and more complex rhythmic patterns. Measure numbers 16, 22, 29, 42 are indicated above the staff. Fingerings 1, 2, 3, 4 are shown in boxes. Dynamics include *mf*, *p*, *ppp*, and *mp*. A *ten.* (tension) marking is present above measure 22.

## III. Petite Marche Militaire

Franchement animé (♩=138)

12 12 2

*f* sec

29 3 7

4 8

*f*

58 5 6

*f* *sff* sec

## IV. Complainte

Calme et mélancolique (♩=46)

TACET

## V. Bransle de Champagne

Modéré, mais sans lenteur (♩=96)

2

*pp* mystérieux *mf*

1 4 2

*pp* très doux

14

*pp*

3 2 4 2

*ff* *p*

28 5 4 6

*mf* *pp* très doux

36

*morendo* *sff* sec

## VI. Sicilienne

Très doucement (♩=48)

8 1 3 *tous*  
*mp* *cresc.*

15 2 4 8 3 9  
*f*

## VII. Carillon

Très vite (♩=92)

10 1 *f*

18 2 5 *ff*

31 3 5 *ff*

4 9 5 4 *ff* *très sec*

6 10 7 *mp* *sec*

88 2 8 10 *f*

105 9 4 6 10 *ff* *très sec*

130 6 *fff*

Trombone 1

# SUITE FRANÇAISE

d'après Claude Gervaise

## I. Bransle de Bourgogne

Francis Poulenc

arr. I. Rae

Gai, mas sans hâte (♩=100)

4 8 2 1 4

*p*

21 2

*mf f sf*

30 3 2

*f mf f*

4 2 4

*f f*

5 4 4

*mf f*

## II. Pavane

Grave et mélancolique (♩=46)

16 8 2

*ppp*

28 2 3 4

39 4

*mp*

4 4

*p p*

Copyright © 1950 Éditions Durand - Paris

All rights reserved

Reproduced by kind permission of MGB Hal Leonard s.r.l.

[www.merittshillmusic.com](http://www.merittshillmusic.com)



## III. Petite Marche Militaire

Franchement animé (♩=138)

12 1 12 2

*f sec*

32 3 7 4

*p bien sec*

48

*f*

57 5 6

*f* *sff sec*

## IV. Complainte

Calme et mélancolique (♩=46)

TACET

## V. Bransle de Champagne

Modéré, mais sans lenteur (♩=96)

5 1 4 2

*mf* *mp*

13

*pp* *cresc.*

19 3 2 4 4

*ff sec*

29 5 4 6

*mf* *mp*

37

*cresc.* *f* *sff sec*

## VI. Sicilienne

Très doucement (♩=48)

3

*pp* très doux

12 *mp* *cresc.* *f*

24 *pp* très doux

32 *pp*

## VII. Carillon

Très vite (♩=92)

10 *f*

20 *ff*

38 *f* *ff*

65 *mf* *f* *mf*

90 *f*

106 *f*

118 *ff* *ff*

132 *fff*

# SUITE FRANÇAISE

d'après Claude Gervaise

## I. Bransle de Bourgogne

Francis Poulenc  
arr. I. Rae

Gai, mas sans hâte (♩=100)

4 8 2 4 1

*p* *mf*

23 2 3

*f* *sf*

3 2

*f* *mf* *f*

4 2 4

*f* *f*

5 4 4

*mf* *f*

## II. Pavane

Grave et mélancolique (♩=46)

16 8 2

*ppp*

28 2 4 3

*mp*

39 4

*p* *p*

### III. Petite Marche Militaire

Franchement animé (♩=138)

12 12 1 2

*f sec*

31 3 7 4

*p bien sec*

47

*f*

57 5 6

*f* *fff sec*

### IV. Complainte

Calme et mélancolique (♩=46)

TACET

### V. Bransle de Champagne

Modéré, mais sans lenteur (♩=96)

5 1 4 2

*mf* *mp*

13

*pp* *cresc.*

19 3 2 4 4

*ff sec*

29 5 4 6

*mf* *mp*

37

*cresc.* *f* *fff sec*

## VI. Sicilienne

Très doucement (♩=48)

3

*pp* très doux

12

*mp* *cresc.* *f*

24

*pp* très doux

32

*pp*

## VII. Carillon

Très vite (♩=92)

10 6

*f*

5

*ff*

5

*f*

41

8 9 4

*ff*

6

10

7

8

*mf* *f* *mf*

8

16

*f*

9

4

118

6

*ff* *ff*

132

4

*fff*

*SUITE FRANÇAISE**d'après Claude Gervaise*

## I. Bransle de Bourgogne

Francis Poulenc

arr. I. Rae

Gai, mas sans hâte (♩=100)

4 12 1 4

mf

23 2 2 3

f sf

3 2

f mf f

4 4 2 4

f f

5 4 4

mf f

## II. Pavane

Grave et mélancolique (♩=46)

16 1 8 2

ppp

29 3 2 3 4

mp

42 4 4

p p

## III. Petite Marche Militaire

Franchement animé (♩=138)

12 1 12 2

f sec

28 3 7

4

*p* bien sec

51

*f*

58

5

6

*f*

*fff* sec

## IV. Complainte

Calme et mélancolique (♩=46)

TACET

## V. Bransle de Champagne

Modéré, mais sans lenteur (♩=96)

5

1

2

2

*mf*

*mf*

*mp*

12

*pp*

*cresc.*

19

3

2

4

2

*ff* sec

*p*

29

5

2

6

*mf*

*mf*

*mp*

36

*cresc.*

*f*

*fff* sec

2

## VI. Sicilienne

Très doucement (♩=48)

3

1

3

*pp* très doux

## Bass Trombone

3

12 *mp* *cresc.* *f* **2** **4** **3**

24 *pp* *très doux* **3** **3**

32 *pp*

## VII. Carillon

*Très vite* ( $\text{♩} = 92$ ) **10** **1** **6** *f*

**2** **5** *ff* **3** **5** *f*

41 **8** **4** **9** **5** **4** *ff*

**6** **10** **7** *mp sec*

83 *mf*

**8** **16** *f* **9** **4**

118 *ff* **6** **10** *ff*

132 **4** *fff*



## SUITE FRANÇAISE

d'après Claude Gervaise

Francis Poulenc

arr. I. Rae

Gai, mas sans hâte (♩=100)

## I. Bransle de Bourgogne

First system: Treble clef, key of D major (two sharps), 2/4 time. Measures 1-4 are a whole rest, marked with a '4' above. Measures 5-8 are another whole rest, marked with an '8' above. Measures 9-12 contain a melody starting on D4, marked with a '2' above and a *p* dynamic.

Second system: Measures 13-23. Measure 13 starts with a first ending bracket [1]. Dynamics include *mp* and *f*.

Third system: Measures 24-33. Measure 24 starts with a second ending bracket [2]. Measure 30 has a *sf* dynamic. Measure 33 has a third ending bracket [3].

Fourth system: Measures 34-44. Measure 34 starts with a third ending bracket [3]. Measure 37 has a *mf* dynamic. Measure 40 has a *f* dynamic. Measure 44 has a fourth ending bracket [4].

Fifth system: Measures 45-56. Measure 45 starts with a *f* dynamic. Measure 50 has a *f* dynamic. Measure 53 has a *mp* dynamic. Measure 56 has a fifth ending bracket [5].

Sixth system: Measures 57-64. Measure 57 starts with a *f* dynamic. Measure 61 has a *f* dynamic. Measure 64 has a *f* dynamic and a fourth ending bracket [4].

## II. Pavane

Grave et mélancolique (♩=46)

First system: Treble clef, key of D major, 3/2 time. Measures 1-16 are a whole rest, marked with a '16' above. Measures 17-24 are another whole rest, marked with an '8' above. Measures 25-28 contain a melody starting on D4, marked with a '2' above and a *ppp* dynamic.

Second system: Measures 29-38. Measure 29 starts with a *mp* dynamic. Measure 32 has a *Solo* marking. Measure 38 has a *mp* dynamic.

Third system: Measures 39-42. Measure 39 starts with a third ending bracket [3]. Measure 42 has a *mp* dynamic.

Fourth system: Measures 43-52. Measure 43 starts with a *mp* dynamic. Measure 46 has a *mp* dynamic. Measure 50 has a *p* dynamic. Measure 52 has a *p* dynamic.

## III. Petite Marche Militaire

Franchement animé ♩=138

First system: Treble clef, key of D major, 2/4 time. Measures 1-12 are a whole rest, marked with a '12' above. Measures 13-24 are another whole rest, marked with a '12' above. Measures 25-36 are a third whole rest, marked with a '12' above.

2

*f* *sec*

34

3 7 4

*p* *bien sec*

50

*f* *mf* 5

61

*f* *sff* *sec*

## IV. Complainte

Calme et mélancolique (♩=46)

TACET

## V. Bransle de Champagne

Modéré, mais sans lenteur (♩=96)

2

*pp* *mystérieux* *mf* 1 2 *mf*

10

2 *pp* *très doux*

15

*pp* *cresc.* 3 *ff* *sec*

22

2 4 *p*

29

5 2 *mf* 6 *pp* *très doux*

36

*morendo* *f* *sff* *sec* *pp*

Très doucement (♩=48)

## VI. Sicilienne

3

*pp* très doux

1 6 2 4 3

*mf* cresc. *f*

24 *pp* très doux

32 *pp*

## VII. Carillon

Très vite (♩=92)

10 1 6 *f*

22 2 5 *ff* 3 5

38 *ff* 5 *f* 4 9 5 4

62 *ff* 6 10 7 2 *f sec*

80 *mf* *f sec* *mf* 2 *mf*

90 8 16 *f*

131 9 4 *ff* 6 10 *ff* 4 *fff*

C Euphonium

# SUITE FRANÇAISE

d'après Claude Gervaise

Francis Poulenc

arr. I. Rae

Gai, mas sans hâte (♩=100)

## I. Bransle de Bourgogne

4 8 2

*p*

1

*mp* *f*

24

2 3

*sf*

3 4 4

*mf* *f*

45

2 4 5

*f* *f* *mp*

57

4

*f*

## II. Pavane

Grave et mélancolique (♩=46)

16 8 2

*ppp*

29

2 Solo

*mp*

3 4

*mp*

43

4 4

*p* *p*

## III. Petite Marche Militaire

Franchement animé ♩=138

12 1

12

Copyright © 1950 Éditions Durand - Paris

All rights reserved

Reproduced by kind permission of MGB Hal Leonard s.r.l.

[www.merittshillmusic.com](http://www.merittshillmusic.com)

2

*f* *sec*

34

3 7 4

*p* *bien sec*

50

5

*f* *mf*

61

*f* *fff* *sec*

## IV. Complainte

Calme et mélancolique (♩=46)

TACET

6

## V. Bransle de Champagne

Modéré, mais sans lenteur (♩=96)

2

*pp* *mystérieux* *mf*

9

*mf* *pp* *très doux*

14

*pp*

19

3 2 4

*cresc.* *ff* *sec* *p*

26

5 2

*mf*

32

6

*mf* *pp* *très doux*

37

8 8

*morendo* *f* *fff* *sec* *pp*

## VI. Sicilienne

Très doucement (♩=48)

3

*pp* très doux

1 6 2 4 3

24

*mf* cresc. *f*

32

*pp* très doux

*pp*

## VII. Carillon

Très vite (♩=92)

10 1 6 *f*

22 2 5 3 5

38 *ff* 5 *f* 4 9 5 4

62 *ff* 6 10 7 2 *f sec*

80 *mf* *f sec* *mf* 2 *mf*

90 8 16 *f*

9 4 *ff* 6 10 *ff*

131 4 *fff*

## SUITE FRANÇAISE

d'après Claude Gervaise

Francis Poulenc

arr. I. Rae

## I. Bransle de Bourgogne

Gai, mas sans hâte (♩=100)

4 12 1

21 *mp* 2

29 *f* 3 4 *mf* *f*

57 *f* 5 3 4 5 *mp* 4

*f*

## II. Pavane

Grave et mélancolique (♩=46)

16 1 8 2

29 *ppp*

3 4 a2 *mp*

43 4 4 4 *p* *pp*

## III. Petite Marche Militaire

Franchement animé ♩=138

12 1 12 2 a2

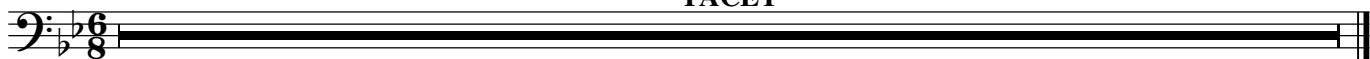
29 *f sec* 3 7



## IV. Complainte

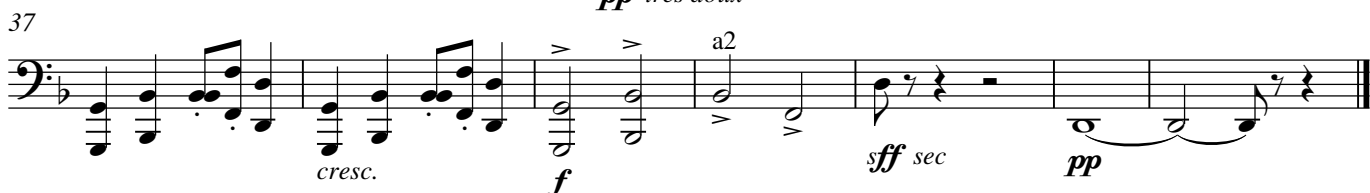
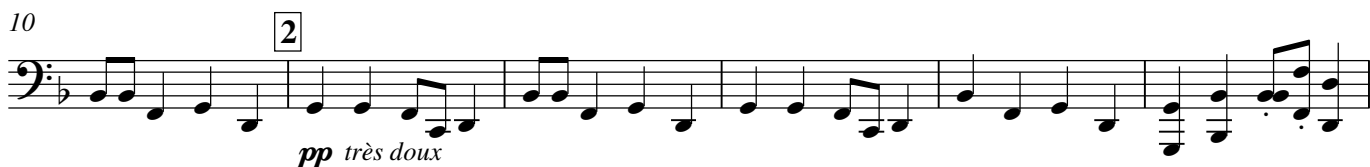
Calme et mélancolique (♩=46)

TACET



## V. Bransle de Champagne

Modéré, mais sans lenteur (♩=96)





## VI. Sicilienne

Très doucement (♩=48)

3

*pp* très doux

12

1. *mp* 2. *cresc.* *f*

24

*pp* très doux

3 4 a2

*pp*

## VII. Carillon

Très vite (♩=92)

10 1 a2

*f*

20

2 5 3 5

38

8 4 9 5 4

*ff*

65

6 10 7 1. *mp sec*

84

4 8 10 a2

*f*

104

9 4 6 10

*ff*

132

4 *fff*

# SUITE FRANÇAISE

d'après Claude Gervaise

## I. Bransle de Bourgogne

Francis Poulenc  
arr. I. Rae

Gai, mas sans hâte (♩=100)

Measures 1-45 of the Bransle de Bourgogne. The score is in 2/4 time. It features a series of rhythmic patterns with repeat signs and measure counts above the staff. The dynamics are marked *mf* (measures 1-10), *mf* (measures 11-20), and *f* (measures 21-45). The key signature has one flat (B-flat).

## II. Pavane

Grave et mélancolique (♩=46)

Measures 1-33 of the Pavane. The score is in 3/2 time. It features a series of rhythmic patterns with repeat signs and measure counts above the staff. The dynamics are marked *p* (measures 1-33). The key signature has two flats (B-flat and E-flat).

## III. Petite Marche Militaire

Franchement animé ♩=138

Measures 1-53 of the Petite Marche Militaire. The score is in 2/4 time. It features a series of rhythmic patterns with repeat signs and measure counts above the staff. The dynamics are marked *mf* (measures 1-10), *f* (measures 11-20), and *f* (measures 21-53). The key signature has two flats (B-flat and E-flat).

## IV. Complainte

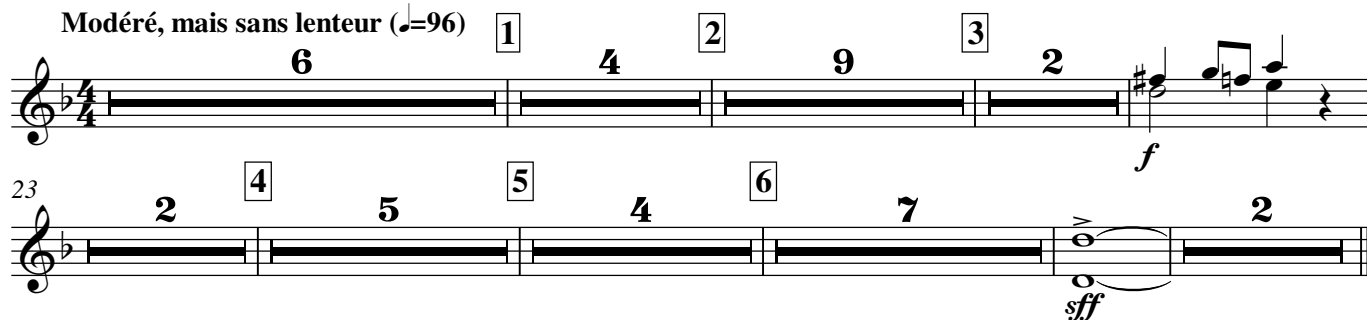
Calme et mélancolique (♩=46)

TACET



## V. Bransle de Champagne

Modéré, mais sans lenteur (♩=96)



## VI. Sicilienne

Très doucement (♩=48)

TACET



## VII. Carillon

Très vite (♩=92)



Timpani

# SUITE FRANÇAISE

d'après Claude Gervaise

Francis Poulenc

arr. I. Rae

## I. Bransle de Bourgogne

Gai, mas sans hâte (♩=100)

4 12 1 6 2 8 3 6

39 4 14 5 6 4

*mf* *mf*

Trills and slurs are present in the notation.

## II. Pavane

Grave et mélancolique (♩=46)

16 1 8 2 4

33 2 3 5

43 4 4 6 2

*pp* *p* *pp*

Trills and slurs are present in the notation.

## III. Petite Marche Militaire

Franchement animé ♩=138

12 1 5 5 2 4

30 2 3 7 4

48

57 5 5 2

*sff* *p* *f* *mf* *f*

Trills and slurs are present in the notation.

Calme et mélancolique (♩=46)

## IV. Complainte

TACET

6/8

Copyright © 1950 Éditions Durand - Paris

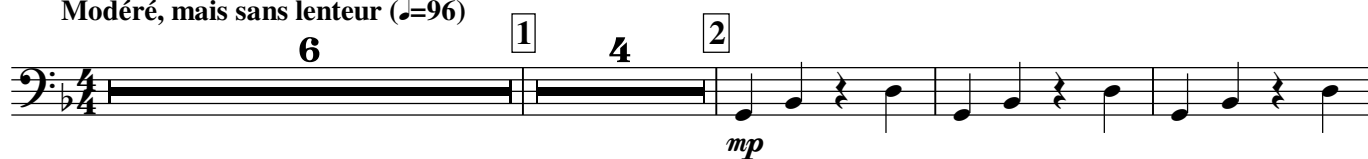
All rights reserved

Reproduced by kind permission of MGB Hal Leonard s.r.l.

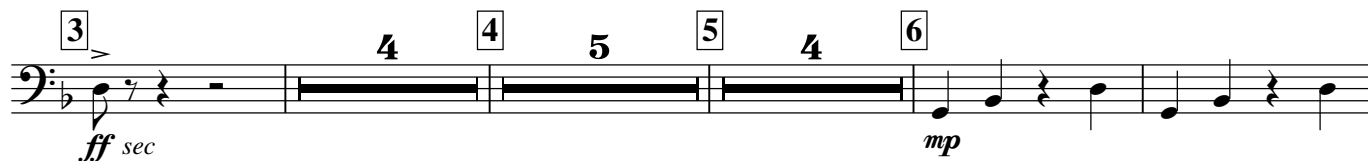
[www.merittshillmusic.com](http://www.merittshillmusic.com)

## V. Bransle de Champagne

Modéré, mais sans lenteur (♩=96)



14



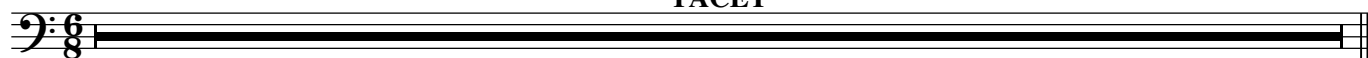
36



## VI. Sicilienne

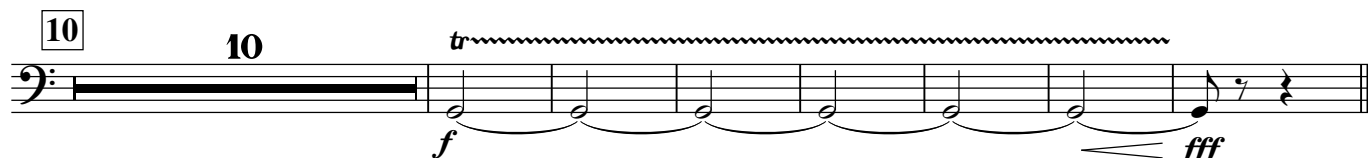
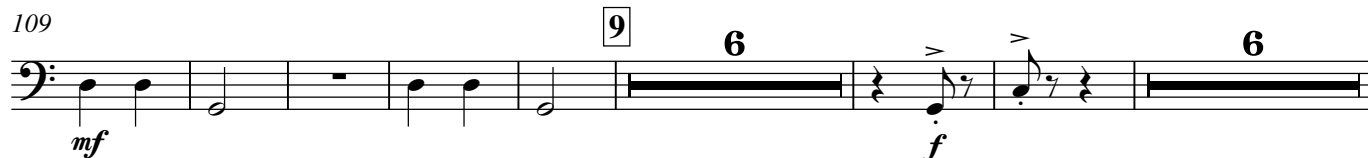
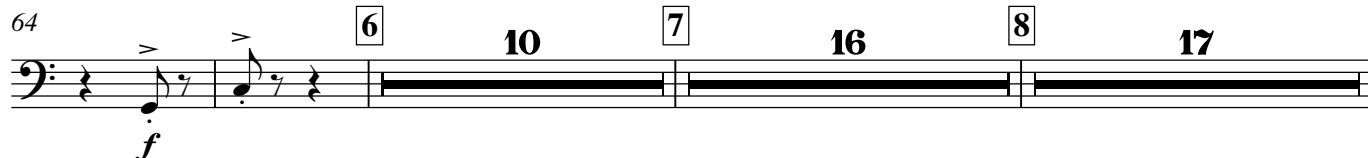
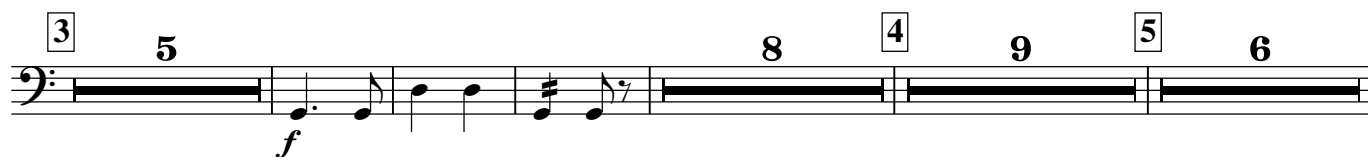
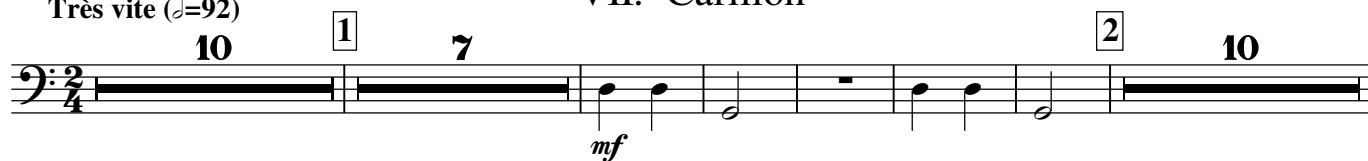
Très doucement (♩=48)

TACET



## VII. Carillon

Très vite (♩=92)



PERCUSSION

Snare Drum

Triangle

Cymbals

Bass Drum

# SUITE FRANÇAISE

d'après Claude Gervaise

## I. Bransle de Bourgogne

Francis Poulenc

arr. I. Rae

Gai, mas sans hâte (♩=100)

S. D. 

S. D. 

S. D. 

S. D. 

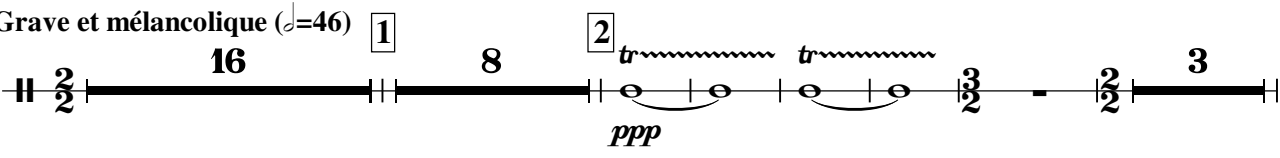
S. D. 

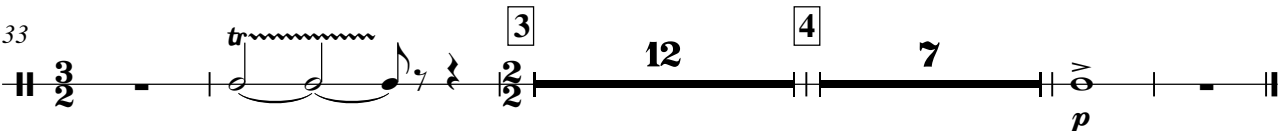
S. D. 

S. D. 

## II. Pavane

Grave et mélancolique (♩=46)

B. D. 

B. D. 

Copyright © 1950 Éditions Durand - Paris

All rights reserved

Reproduced by kind permission of MGB Hal Leonard s.r.l.

www.merittshillmusic.com

### III. Petite Marche Militaire

[illegible]

## IV. Complainte

Calme et mélancolique (♩.=46)

S. D. 6 8 8 2 9 6 5 9 9

snare off *tr* *Enchaînez*

*p*

## V. Bransle de Champagne

**Modéré, mais sans lenteur (♩=96)**

**Modéré, mais sans lenteur (♩=96)**

S. D. Musical score for Snare Drum (S. D.). It begins with a 4-measure rest, followed by an 8-measure phrase (measures 9-16) containing two eighth-note triplets, each marked *mp sec* and *mf* respectively. This is followed by a 4-measure rest (measures 17-20) and a 9-measure rest (measures 21-29). Boxed measure numbers 1, 2, and 9 are present.

Tri. Musical score for Triangle (Tri.). It starts with a *ff* tremolo (measures 1-2), then a 4-measure rest (measures 3-6), and a 4-measure rest (measures 7-10). In measure 11, it has a triplet marked *mf sec*. Boxed measure numbers 3 and 4 are present.

Cym. Musical score for Cymbal (Cym.). It starts with a *ff* tremolo (measures 1-2), then a 4-measure rest (measures 3-6), and a 4-measure rest (measures 7-10). In measure 11, it has a triplet marked *mf sec*. Boxed measure numbers 3 and 4 are present.

B. D. Musical score for Bass Drum (B. D.). It begins with a 4-measure rest (measures 1-4), followed by a 6-measure rest (measures 5-10), and a 6-measure phrase (measures 11-16) containing a half note (*mf*), a half note (*f*), and a quarter note triplet (*fff sec*). This is followed by a 4-measure rest (measures 17-20) and a 4-measure rest (measures 21-24). Boxed measure numbers 5 and 6 are present.

## VI. Sicilienne

**Très doucement (♩.=48)**

S. D. 6  
8 TACET

## VII. Carillon

**Très vite (♩=92)**

Tri.  
B. D.

Tri.  
B. D.

S. D.  
Tri.  
B. D.



7

S. D. *mp*

Cym. *mp*

B. D. *mp*

2 8

To Tri.

8

S. D. 10

Tri. 10

B. D. 10

*mf*