

Flute 1

# POLONAISE

FOR THE UNVEILING OF THE STATUE OF ANTON RUBINSTEIN

14.XII.1902

A. Lyadov Op.55

arr. I. Rae

Moderato  $\text{♩} = 76$

7

1

*p* *f*

12

3 3

16

2

*mf* *mf* *f*

21

2

*p* *f*

27

3 3

To Coda  $\oplus$

31

4 7 5

*p*

43

1. 2.

50

D.C. al Coda

$\oplus$  CODA

6 poco stringendo

*ff*

54

58

62

Flute 2

# POLONAISE

FOR THE UNVEILING OF THE STATUE OF ANTON RUBINSTEIN

14.XII.1902

A. Lyadov Op.55

arr. I. Rae

Moderato  $\text{♩} = 76$

7  $p$   $f$

12 3 3

16 2  $mf$   $f$   $p$

24 3  $f$

29 3 3 To Coda  $\Phi$

33 4 8 5 3 2 1. 2 2. 2 D.C. al Coda  $mp$

32  $\Phi$  CODA 6  $poco\ stringendo$   $ff$

35

39

43

Piccolo

# POLONAISE

FOR THE UNVEILING OF THE STATUE OF ANTON RUBINSTEIN

14.XII.1902

A. Lyadov Op.55

arr. I. Rae

**Moderato**  $\text{♩} = 76$

8

1

*f*

*tr*

13

2

6

23

3

*p* *f*

*tr*

To Coda  $\Phi$

28

D.C. al Coda

32

4

8

5

6

1. 2

2. 2

$\Phi$  CODA

32

6

*poco stringendo*

*ff*

35

39

43

Oboe 1

# POLONAISE

FOR THE UNVEILING OF THE STATUE OF ANTON RUBINSTEIN

14.XII.1902

A. Lyadov Op.55

arr. I. Rae

Moderato ♩=76

The musical score for Oboe 1 is written in treble clef with a key signature of two sharps (D major) and a 3/4 time signature. The tempo is marked 'Moderato' with a metronome marking of ♩=76. The score begins with a forte (f) dynamic and a trill on the first measure. It features several trills throughout, including on measures 6, 16, 32, and 51. Dynamics vary from forte (f) to piano (p) and mezzo-forte (mf), culminating in fortissimo (ff) at measure 56. The score includes first and second endings at measures 44-47 and 51-54. Performance instructions include 'To Coda' at measure 27, 'D.C. al Coda' at measure 47, and 'CODA' at measure 51. The piece concludes with a 'poco stringendo' instruction at measure 56 and a final cadence at measure 61.

Oboe 2

# POLONAISE

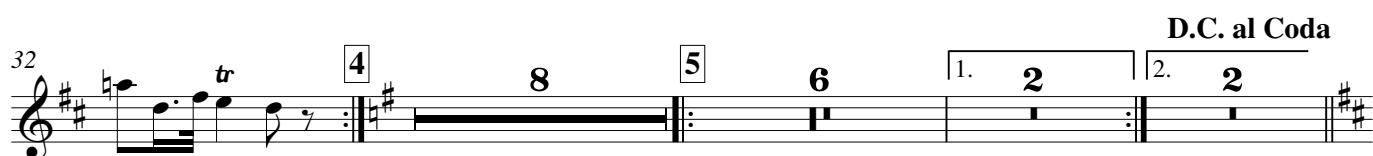
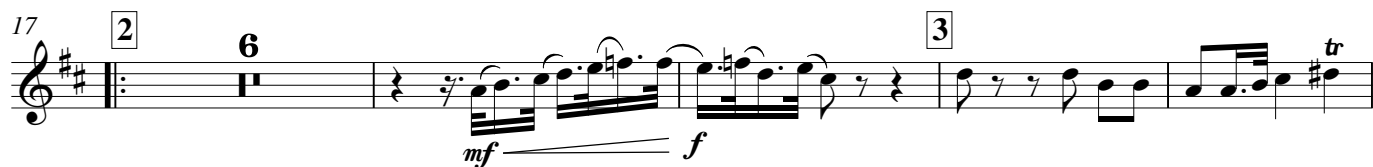
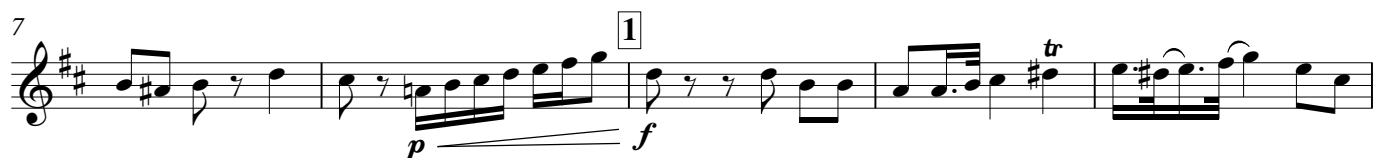
FOR THE UNVEILING OF THE STATUE OF ANTON RUBINSTEIN

14.XII.1902

A. Lyadov Op.55

arr. I. Rae

Moderato ♩=76



Bassoon 1

# POLONAISE

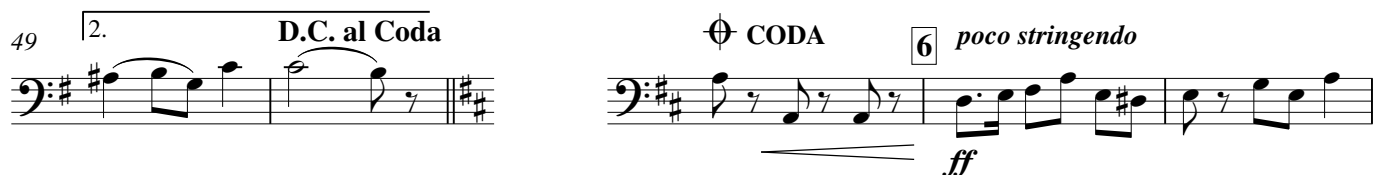
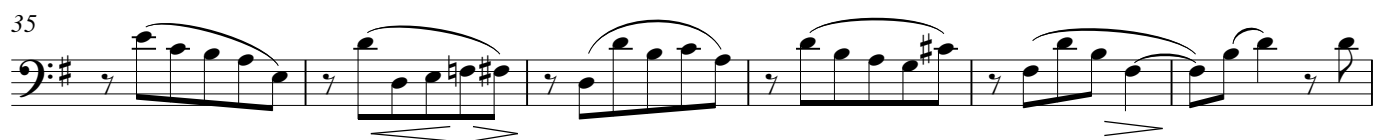
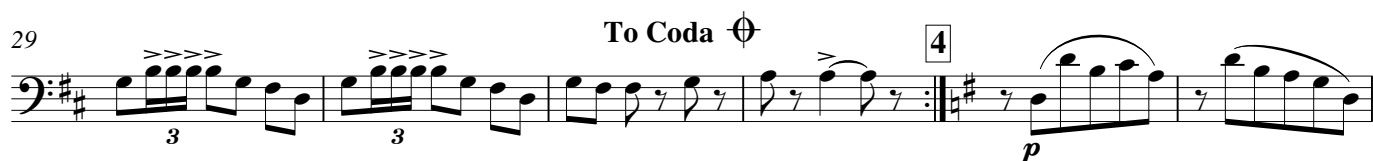
FOR THE UNVEILING OF THE STATUE OF ANTON RUBINSTEIN

14.XII.1902

A. Lyadov Op.55

arr. I. Rae

Moderato ♩=76



Bassoon 2

# POLONAISE

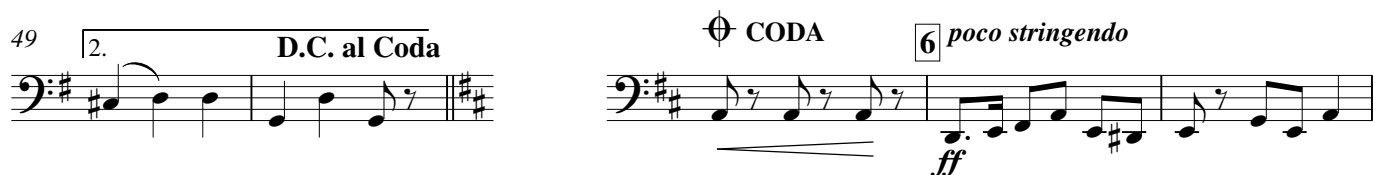
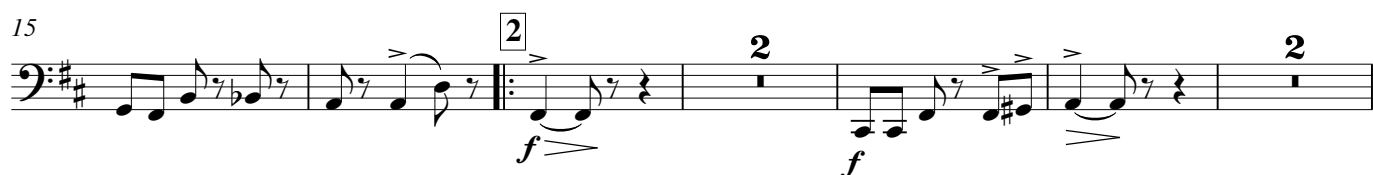
FOR THE UNVEILING OF THE STATUE OF ANTON RUBINSTEIN

14.XII.1902

A. Lyadov Op.55

arr. I. Rae

Moderato ♩=76



Contrabassoon

# POLONAISE

FOR THE UNVEILING OF THE STATUE OF ANTON RUBINSTEIN

14.XII.1902

A. Lyadov Op.55

arr. I. Rae

Moderato  $\text{♩}=76$   
8



© mhm 2013



Clarinet in E $\flat$

# POLONAISE

FOR THE UNVEILING OF THE STATUE OF ANTON RUBINSTEIN

14.XII.1902

A. Lyadov Op.55

arr. I. Rae

Moderato  $\text{♩} = 76$

6

*f* *p* *f*

1

11

16

2

6

*p* *f*

3

26

*tr*

31

To Coda  $\oplus$

4

8

5

6

1. 2

49

2.

2

$\oplus$  CODA

6

*poco stringendo*

*ff*

34

38

43

Clarinet in B $\flat$  1

# POLONAISE

FOR THE UNVEILING OF THE STATUE OF ANTON RUBINSTEIN

14.XII.1902

A. Lyadov Op.55

arr. I. Rae

**Moderato**  $\text{♩} = 76$

*f* *tr*

6 *p* *f* *tr*

11

16 *tr* *mf* *p* *f*

21 *mf* *f* *tr*

28 *To Coda*  $\Phi$  *tr*

33 *2 soli* *mp dolce*

40 *mp* *a2*

47 *1.* *2.* *D.C. al Coda*  $\Phi$  *CODA*

52 *6* *poco stringendo* *ff*

57

62

Clarinet in B $\flat$  2

# POLONAISE

FOR THE UNVEILING OF THE STATUE OF ANTON RUBINSTEIN

14.XII.1902

A. Lyadov Op.55

arr. I. Rae

Moderato  $\text{♩}=76$

6 *f* *tr*

12 *p* *f* *tr*

17 *f* *sfz* *p* *f* *f* *sfz*

23 *mf* *f* *tr*

28 To Coda  $\Phi$

33 *p*

39 *5*

47 1. 2. D.C. al Coda

52 *poco stringendo* *ff*

59

Clarinet in B $\flat$  3

# POLONAISE

FOR THE UNVEILING OF THE STATUE OF ANTON RUBINSTEIN

14.XII.1902

A. Lyadov Op.55

arr. I. Rae

Moderato  $\text{♩}=76$

7 *f* *tr*

12 *p* *f* *tr*

17 *f* *sfz* *p* *f* *f* *sfz*

23 *mf* *f* *tr*

28 *To Coda*  $\Phi$

33 *p*

39 *5*

47 *1.* *2.* *D.C. al Coda*  $\Phi$  *CODA*

52 *6* *poco stringendo* *ff*

59

Alto Clarinet in E $\flat$

# POLONAISE

FOR THE UNVEILING OF THE STATUE OF ANTON RUBINSTEIN

14.XII.1902

A. Lyadov Op.55

arr. I. Rae

Moderato  $\text{♩} = 76$

8 **f**

14 **f** **sfmf** **p** **f**

21 **f** **sfmf** **f**

28 **To Coda**  $\Phi$  **p**

34

41 **5** **1.**

49 **2.** **D.C. al Coda**  $\Phi$  **CODA** **6** **poco stringendo** **ff**

53

59

Bass Clarinet in B $\flat$

# POLONAISE

FOR THE UNVEILING OF THE STATUE OF ANTON RUBINSTEIN

14.XII.1902

A. Lyadov Op.55

arr. I. Rae

Moderato  $\text{♩}=76$

7 **1**

13 **2**

19 **3**

25 **3** To Coda  $\Phi$

32 **4**

41 **5** [Fg.2] **1.** **2.** D.C. al Coda

51  $\Phi$  CODA **6** poco stringendo

55

60

Contra-alto Clarinet in E $\flat$

# POLONAISE

FOR THE UNVEILING OF THE STATUE OF ANTON RUBINSTEIN

14.XII.1902

A. Lyadov Op.55

arr. I. Rae

Moderato  $\text{♩}=76$   
8

1

*f*

14

2

*f* *sf*

20

3

*f* *sf* *f*

27

To Coda  $\Phi$

33

4 8 5 6 1. 2 2 D.C. al Coda

$\Phi$  CODA

6 *poco stringendo*

*ff*

© *mhm* 2013

Contrabass Clarinet in B $\flat$

# POLONAISE

FOR THE UNVEILING OF THE STATUE OF ANTON RUBINSTEIN

14.XII.1902

A. Lyadov Op.55

arr. I. Rae

**Moderato**  $\text{♩} = 76$

8 1

*f*

14 2 *sfp* *f*

20 *f* *f* *sfp* *f* 3

27 *To Coda*  $\Phi$

33 4 8 5 6 1. 2 2. 2 *D.C. al Coda*

$\Phi$  CODA

6 *poco stringendo* *ff*



Alto Saxophone 1

# POLONAISE

FOR THE UNVEILING OF THE STATUE OF ANTON RUBINSTEIN

14.XII.1902

A. Lyadov Op.55

arr. I. Rae

**Moderato**  $\text{♩} = 76$

**1**

**2**

**3**

**4** **5** **6** **1. 2** **2. 2** **D.C. al Coda** **Φ CODA**

**6** *poco stringendo*

**ff**

**To Coda Φ**

© *mhm* 2013

Alto Saxophone 2

# POLONAISE

FOR THE UNVEILING OF THE STATUE OF ANTON RUBINSTEIN

14.XII.1902

A. Lyadov Op.55

arr. I. Rae

**Moderato**  $\text{♩} = 76$

**4**

**1**

*f* *p* *f*

10

16

**2**

*mf* *p* *mp* *mf* *mf*

23

**3**

*f*

28

To Coda  $\Phi$

33

**4** **8** **5** **6** **1. 2** **2. 2** **D.C. al Coda**

$\Phi$  **CODA**

52

**6** *poco stringendo*

*ff*

57

62

Tenor Saxophone

# POLONAISE

FOR THE UNVEILING OF THE STATUE OF ANTON RUBINSTEIN

14.XII.1902

A. Lyadov Op.55

arr. I. Rae

**Moderato**  $\text{♩} = 76$

**4**

**1**

*f*

*f*

**10**

**16**

**2**

*p*

*mf*

*p*

**23**

**3**

*f*

**30**

To Coda  $\Phi$

**4**

**8**

**5**

**6**

**1. 2**

**49**

**2.**

**2**

D.C. al Coda

$\Phi$  CODA

**6**

*poco stringendo*

*ff*

**54**

**60**

Baritone Saxophone

# POLONAISE

FOR THE UNVEILING OF THE STATUE OF ANTON RUBINSTEIN

14.XII.1902

A. Lyadov Op.55

arr. I. Rae

Moderato  $\text{♩} = 76$

7

1

*mp*  $\text{f}$

13

2

*p*

19

3

*mf* *p* *f*

26

To Coda  $\Phi$

32

4

8

5

6

1. 2

2. 2 D.C. al Coda

32

$\Phi$  CODA

6

*poco stringendo*

*ff*

36

41

© *mhm* 2013

Horn in F 1

# POLONAISE

FOR THE UNVEILING OF THE STATUE OF ANTON RUBINSTEIN

14.XII.1902

A. Lyadov Op.55

arr. I. Rae

Moderato ♩=76

Sheet music for Horn in F 1, featuring measures 1 through 60. The key signature is three sharps (F#, C#, G#) and the time signature is 3/4. The tempo is Moderato (♩=76). The music includes various dynamics (f, p, mf, f sfp, mp, ff) and articulations (accents, slurs, breath marks). Rehearsal marks 1 through 6 are indicated. The piece concludes with a Coda section starting at measure 49.

Measures 1-6: *f*, 3rd measure has a triplet of eighth notes.

Measures 7-11: *p* to *f* crescendo, 9th measure has a triplet of eighth notes.

Measures 12-16: 13th measure has a triplet of eighth notes.

Measures 17-24: Rehearsal mark 2, *f sfp*, *p* to *mf* crescendo, *f sfp*, *p* to *f* crescendo.

Measures 25-30: Rehearsal mark 3, triplet of eighth notes at measures 28 and 30.

Measures 31-38: Rehearsal mark 4, *p*, breath mark, *p* to *mf* crescendo.

Measures 39-48: Rehearsal mark 5, *mp*, first ending bracketed, leading to measure 49.

Measures 49-53: Rehearsal mark 6, *poco stringendo*, *ff*, second ending bracketed, leading to measure 54.

Measures 54-59: 58th measure has a triplet of eighth notes.

Measure 60: Final measure, half note.

Horn in F 2

# POLONAISE

FOR THE UNVEILING OF THE STATUE OF ANTON RUBINSTEIN

14.XII.1902

A. Lyadov Op.55

arr. I. Rae

Moderato ♩=76

7

12

17

24

30

To Coda  $\Phi$

47

1. 2. D.C. al Coda

$\Phi$  CODA

6 poco stringendo

ff

Horn in F 3

# POLONAISE

FOR THE UNVEILING OF THE STATUE OF ANTON RUBINSTEIN

14.XII.1902

A. Lyadov Op.55

arr. I. Rae

Moderato  $\text{♩} = 76$

8

1

*f*

14

3

2

*mf* *p* *mf*

21

3

*mf* *p* *f*

28

3

To Coda  $\Phi$

33

4

6

5

6

1. 2

2. 2

D.C. al Coda

*mp* *p*

32

$\Phi$  CODA

6

*poco stringendo*

*ff*

37

42

Horn in F 4

# POLONAISE

FOR THE UNVEILING OF THE STATUE OF ANTON RUBINSTEIN

14.XII.1902

A. Lyadov Op.55

arr. I. Rae

Moderato  $\text{♩} = 76$

8

1

*f*

14

3

2

*mf* *p* *mf*

21

3

*mf* *p* *f*

28

3

To Coda  $\Phi$

33

4

6

5

6

1. 2

2. 2

D.C. al Coda

*mp* *p*

32

$\Phi$  CODA

6

*poco stringendo*

*ff*

37

42

© *mhm* 2013



Trumpet in B $\flat$  1

# POLONAISE

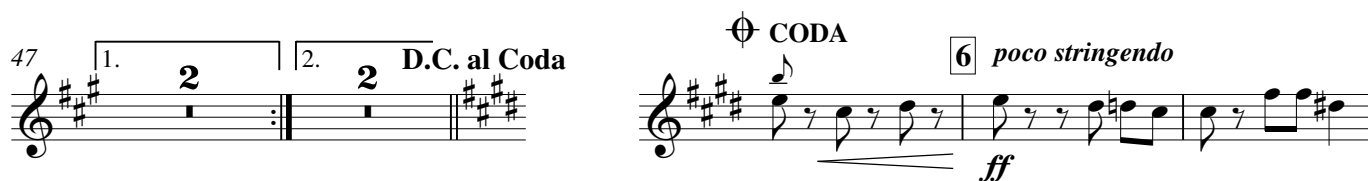
FOR THE UNVEILING OF THE STATUE OF ANTON RUBINSTEIN

14.XII.1902

A. Lyadov Op.55

arr. I. Rae

Moderato  $\text{♩}=76$



Trumpet in B $\flat$  2

# POLONAISE

FOR THE UNVEILING OF THE STATUE OF ANTON RUBINSTEIN

14.XII.1902

A. Lyadov Op.55

arr. I. Rae

Moderato  $\text{♩}=76$

1. *f*

8. *p* *f*

14. *mf*

24. *mf* *f*

30. *To Coda*  $\Phi$

47. 1. 2. *D.C. al Coda*  $\Phi$  *CODA* 6 *poco stringendo* *ff*

35.

41.

Cornet in B $\flat$  1

# POLONAISE

FOR THE UNVEILING OF THE STATUE OF ANTON RUBINSTEIN

14.XII.1902

A. Lyadov Op.55

arr. I. Rae

Moderato  $\text{♩}=76$

1. *f*

6. *mf* < *f*

12. *mf* < *f*

17. *mf* < *f*

29. To Coda  $\oplus$

33. 4 8 5 6 1. 2 2. 2 D.C. al Coda

32.  $\oplus$  CODA 6 *poco stringendo*

36. *ff*

41.

Cornet in B $\flat$  2

# POLONAISE

FOR THE UNVEILING OF THE STATUE OF ANTON RUBINSTEIN

14.XII.1902

A. Lyadov Op.55

arr. I. Rae

Moderato  $\text{♩}=76$

*f*

*mf* < *f*

*mf* < *f*

To Coda  $\oplus$

*ff*

*poco stringendo*

$\oplus$  CODA

© *mhmm* 2013

1st E $\flat$  Alto Horn

# POLONAISE

FOR THE UNVEILING OF THE STATUE OF ANTON RUBINSTEIN

14.XII.1902

A. Lyadov Op.55

arr. I. Rae

Moderato  $\text{♩}=76$

8

1

*f*

14

2 8 3

*f*

27 To Coda  $\Phi$

32

4 8 5 6 1. 2 2. 2 D.C. al Coda

$\Phi$  CODA 6 *poco stringendo*

*ff*

2nd E♭ Alto Horn

# POLONAISE

FOR THE UNVEILING OF THE STATUE OF ANTON RUBINSTEIN

14.XII.1902

A. Lyadov Op.55

arr. I. Rae

Moderato  $\text{♩}=76$

8

1

*f*

14

2

8

3

*f*

27

To Coda  $\Phi$

32

4

8

5

6

1. 2

2. 2

D.C. al Coda

$\Phi$  CODA

6 *poco stringendo*

*ff*

© *mhm* 2013

2nd B♭ Baritone

# POLONAISE

FOR THE UNVEILING OF THE STATUE OF ANTON RUBINSTEIN

14.XII.1902

A. Lyadov Op.55

arr. I. Rae

Moderato  $\text{♩}=76$

8

1

*f*

14

2

8

3

*f*

26

To Coda  $\Phi$

32

4

8

5

6

1. 2

2. 2

D.C. al Coda

32

$\Phi$  CODA

6 *poco stringendo*

*ff*

39

Trombone 1

# POLONAISE

FOR THE UNVEILING OF THE STATUE OF ANTON RUBINSTEIN

14.XII.1902

A. Lyadov Op.55

arr. I. Rae

Moderato  $\text{♩} = 76$

*f*

*mf f*

*mf* *f*

To Coda  $\text{Coda symbol}$

*p*

*ff*

*poco stringendo*

© *mhm* 2013



Trombone 2

# POLONAISE

FOR THE UNVEILING OF THE STATUE OF ANTON RUBINSTEIN

14.XII.1902

A. Lyadov Op.55

arr. I. Rae

Moderato  $\text{♩}=76$

Sheet music for Trombone 2, showing measures 1 through 58. The key signature is one sharp (F#) and the time signature is 3/4. The music includes various dynamics (f, mf, p, ff), articulations (accents, slurs), and performance instructions (To Coda, D.C. al Coda, CODA, poco stringendo). Measure numbers 7, 14, 26, 32, 45, 51, and 58 are indicated at the start of their respective staves.

© *mhm* 2013

Bass Trombone

# POLONAISE

FOR THE UNVEILING OF THE STATUE OF ANTON RUBINSTEIN

14.XII.1902

A. Lyadov Op.55

arr. I. Rae

Moderato ♩=76

Sheet music for Bass Trombone, measures 1 to 57. The score includes various musical notations such as dynamics (*f*, *p*, *mf*, *ff*), articulation (accents, slurs), and performance instructions (1., 2., D.C. al Coda, CODA, poco stringendo). The key signature is one sharp (F#) and the time signature is 3/4. The piece concludes with a final measure marked with a double bar line.

© *mhm* 2013

1st B♭ Baritone &

B♭ Euphonium

# POLONAISE

FOR THE UNVEILING OF THE STATUE OF ANTON RUBINSTEIN

14.XII.1902

A. Lyadov Op.55

arr. I. Rae

Moderato ♩=76

7

14

21

27

33

47

34

41

*f*

*p*

*f*

*f* *sf*

*f* *sf*

*f*

To Coda ⊕

*pp*

*ff*

*poco stringendo*

D.C. al Coda

C Euphoniums

# POLONAISE

FOR THE UNVEILING OF THE STATUE OF ANTON RUBINSTEIN

14.XII.1902

A. Lyadov Op.55

arr. I. Rae

Moderato ♩=76

7

14

21

27

33

47

34

41

*f*

*p* *f*

*f* *sf* *f*

*f* *sf* *f*

To Coda  $\Phi$

*pp*

1. 2. D.C. al Coda

$\Phi$  CODA

*ff*

6 *poco stringendo*

Tubas

# POLONAISE

FOR THE UNVEILING OF THE STATUE OF ANTON RUBINSTEIN

14.XII.1902

A. Lyadov Op.55

arr. I. Rae

Moderato ♩=76

8 **f**

15 **p** **f** **1**

21 **f** **sf** **f** **3** **2**

27 **f** **sf** **f** **3**

33 **pp** **4** **(4)** **5**

43 **1.** **2.** **D.C. al Coda**

51 **Φ CODA** **6 poco stringendo** **ff**

55

60

Glockenspiel

# POLONAISE

FOR THE UNVEILING OF THE STATUE OF ANTON RUBINSTEIN

14.XII.1902

A. Lyadov Op.55

arr. I. Rae

Moderato  $\text{♩}=76$   
8

1

*f*

13

2 8 3

*f*

To Coda  $\Phi$

26

32

4 8 5 6 1. 2 2 D.C. al Coda

32  $\Phi$  CODA 6 *poco stringendo* 7

*ff* *f*

43

© *mhm* 2013

Timpani

# POLONAISE

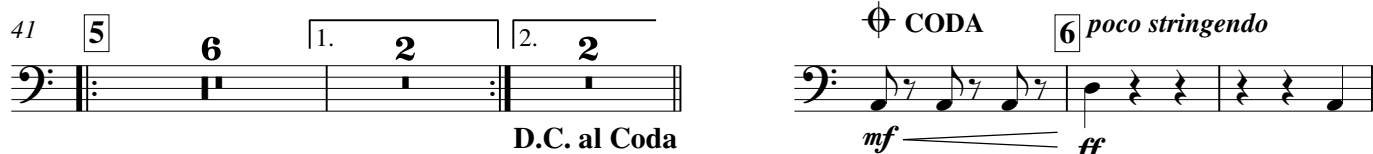
FOR THE UNVEILING OF THE STATUE OF ANTON RUBINSTEIN

14.XII.1902

A. Lyadov Op.55

arr. I. Rae

Moderato  $\text{♩}=76$



© *mhm* 2013

Triangle  
Side Drum  
Cymbals  
Bass Drum

FOR THE UNVEILING OF THE STATUE OF ANTON RUBINSTEIN  
14.XII.1902

A. Lyadov Op.55  
*arr. I. Rae*

**Moderato** ♩=76

Tri.

S. D.

Cym.

B. D.

arr. I. Rae

6

Tri.

S. D.

Cym.

B. D.

1

*f*

*f*

*f*

*f*

12

Tri.

S. D.

Cym.

B. D.

The image shows a musical score for a piece titled 'The Rose Tree'. The score is written for four instruments: Tri. (Triangle), S. D. (Snare Drum), Cym. (Cymbal), and B. D. (Bass Drum). The music is in 2/4 time and consists of five measures. The first measure is marked with a '12' above the staff. The Tri. part features a series of eighth and sixteenth notes, while the S. D. part has a more complex rhythmic pattern. The Cym. and B. D. parts provide a steady accompaniment. The score ends with a double bar line.



24 3

Tri. 3

S. D. *f* *p* *f*

Cym. *mf* *f*

B. D. *mf* *f*

28 3 **To Coda**  $\Phi$

Tri. 3

S. D. *f* *p* *f*

Cym. *mf* *f*

B. D. *mf* *f*

33 4 **8** 5 **6** 1. **2** 2. **2** **D.C. al Coda**

S. D. 4 5 6 1. 2. 2

32  $\Phi$  **CODA** 6 *poco stringendo*

Tri. 6

S. D. *f* *p* *f*

Cym. *mf* *f*

B. D. *mf* *f*

38

Tri. 6

S. D. *f* *p* *f*

Cym. *mf* *f*

B. D. *mf* *f*