

SCHEHERAZADE

N. Rimsky - Korsakov
arr. I. Rae

[illegible]

II. The Tale of the Kalandar Prince

[illegible]

Trumpet 1

3

191 32

f

198 33 Moderato assai $\text{♩}=72$

sf f pp *cadenza*

205 cadenza

f pp f pp *cadenza*

211 34 Allegro molto ed animato $\text{♩}=152$ 35

sf p 3 cresc. 3 3 3 3 3 3

223 36 Con moto $\text{♩}=152$ 37

f f mf

240 38 $\text{♩}=144$

f

248 39 $\text{♩}=152$

f sf f sf sf

261 40 $\text{♩}=126$ 41 accelerando

ff p

279 42

mf cresc.

286 43 Animato

sf

III. The Young Prince & The Young Princess

44 Andantino quasi allegretto $\text{♩} = 52$

45 8 11

46 Solo p 26

47 32 5 p

48 1 mp mf p mp mf

49 2 con sord. p pp

50 3 3 pp

51 3 3 p

52 3 3 3 3 3 3 3 3 3 3 3 3 p

53 3 3 mf

54 1 1 senza sord. 8 6 sf sf

Trumpet 1

83 **55** Lento Solo
mp

86 **56**
p pp

88

93 **57**
poco f dim.

98 allargando assai
mf p

105
3 3 3 3 3 2

IV. Festival & Shipwreck

[illegible]

6

Trumpet 1

54

67



62

68

2



74

69

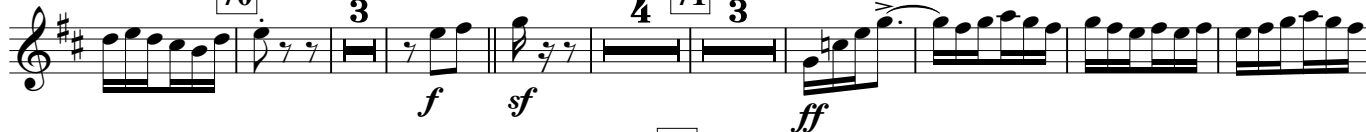
Un poco pesante a tempo



96

70

71



114

72



123

73



141

74

16

75



170

76



193

78

13

79

tr

4

80



224

81

16

82



271

83

84



288

1



300

85



Trumpet 1

7

310 *sf* *sf* *ff* **86** Allegro non troppo $\text{♩} = 56$ maestoso

320 *f* *tr* **87**

328 *f* *tr* *sf* **88**

332 *f* *tr* *sf* **89**

340 *tr*

343 **90**

346 **91** 1 2

353 *ff* *dim.* **92** 3 6 **93** 6

371 **94** Lento Solo *mp*

374 *ten.* **95** Tempo primo $\text{♩} = 54$

384 **96** Solo 4 3 3 3 3 3

SCHEHERAZADE

I. The Sea and Sinbad's Ship

N. Rimsky - Korsakov

arr. I. Rae

Largo e maestoso $\text{♩} = 48$

ff *mf* *pp*

G.P. **G.P.** [3.] [3.]

Lento [1. Solo]

p *mp* *ten.*

1 **Allegro non troppo** $\text{♩} = 56$

mf *p* *Soli* *tr*

mf *p* *tr* *mf*

2 *Solo* *tr* *tr*

pp cresc. poco a poco

3 *f* *tr*

4 *Solo* *mp*

5 **6** **6**

68 **7** [1. Solo] *mp* *Solo* *mp*

71 *pp*

76 **8** *f*

79 *ff* *tr*

82 *tr* *tr*

86 *tr* **9** **6** *ff*

95 *tr*

101 **10** **2** *p* *dim.* *pp*

II. The Tale of the Kalandar Prince

12 Andantino $\text{♩} = 112$ **13** **11** **14** A tempo più mosso $\text{♩} = 144$ **10**

33 **15** **9** **2** **2** **16** A tempo (un poco più animato) *f* *p < sf*

54 **17** tranquillo $\text{♩} = 100$ **6** *Harmon.* *p < sf* *p < sf* *p < sf*

67 **18** Allegro molto ♩=144 **3** Molto moderato ♩=72 **6** Allegro molto ♩=144 **19**

80 Molto moderato ♩=72 Allegro molto ♩=144 **20** 9 **21** 4 senza sord. **2**

103 **22** 1 **1**

113 **23** 3 **3**

124 **24** 3 **4** **25** 2 **3**

141 **26** 3 **27** [1.] **4**

153 Solo con sord. **28**

161 senza sord. **29** 2 **3**

177 **30** 7 **31**

192 **32**

200 **33** Moderato assai ♩=72 **34** Allegro molto ed animato ♩=152 **7**

219 **35** *p* 3 *cresc.* 3 3 3 3 3 **36** *f* *Con moto* $\text{♩} = 152$ 4 1 *f*

233 **37** *mf* **38** *f* $\text{♩} = 144$ 3

243 **39** $\text{♩} = 152$ *f*

252 *p* *sf* *f* *p* *sf* *p* *sf*

261 **40** $\text{♩} = 126$ *ff* *p* **41** *accelerando* 8 2 *p* 3 3 3 3

279 **42** *mf* *cresc.* **43** *Animato* 3 3 3 3 3 3 3 3 3 3 3

287 *sf*

III. The Young Prince & The Young Princess

44 Andantino quasi allegretto ♩=52

45 **11** **46** **5**

47 Solo con sord. **1** *mf*

48 senza sord. **1** *p* *mp* *mf* *p*

35 *mp* *mf* *p* con sord. 1 *p dim.* 3 3 3 3

40 49 3 3 3 3 3 3 3 3 3 3

45 3 3 3 3 50 *p* 3 3 3 3

51 51 *p* 3 3

57 3 3 3 3 *mf*

62 52 1 1 senza sord. 53 8 54 6 *ff* *ff*

83 55 Lento 4 56 8 57 *p* allargando assai *f* *mf*

101 2 2 *p* *p*

IV. Festival & Shipwreck

60 Allegro molto $\text{♩} = 152$ 4 1 61 Lento $\text{♩} = 48$ [1.] *p* 3 3 3 3 3 3 3 3 3 3 3 3

9 3 62 Allegro molto e frenetico *ff* *dim.* *tr* *tr* *tr* *tr* *tr*

18 4 63 *pp cresc.* *ff*

29 64 Lento $\text{♩} = 36$ *f* 3 3 3 3 3 3 3 3 65 Vivo $\text{♩} = 88$ 8

38 **66** 16 **67** 3 3 *f*

60

68 **68** 2 2 2 3 *mf*

86 **69** 2 *sf* **70** 3 *f*
Un poco pesante a tempo *p*

102 4 **71** 3 *ff*

117 **72** 3 **73** 1 *sf* *pp*

129 1 1 1

141 1 **74** 16 **75** 3 *mf* *mf*

169 3 **76** 1 **77** *mf* *mp* *f*

184

193 **78** 5 *sf* *f*

205 **79** 4 *p* poco cresc. *con sord.* 4

220 **80**

mf dim. *mp*

227

234

senza sord.

240 **81**

mf *Solo* *mf*

260

272 **83**

ff

282 **84**

(4) (8)

292 *Solo*

(4) *sf*

301

sf *sf* *sf* *sf*

310

sf *sf* *sf* *sf* *sf*

318 **86** Allegro non troppo maestoso ♩=56

ff *f* *sf* *sf* *sf* *sf* *1* *V.S.*

324 87 88

331

334

336 89

340

344 90

347

353 91 92

365 93 94 Lento

374 [Hn.] con sord. 95 Tempo primo $\text{♩} = 54$ senza sord.

381 96

& Flügelhorn

I. The Sea and Sinbad's Ship

arr. l. Rae

Largo e maestoso $\text{♩}=48$

pp

II. The Tale of the Kalandar Prince

12 Andantino $\text{♩} = 112$ 11 13 11 14 A tempo più mosso $\text{♩} = 144$ 10

33 15 9 accel. 2 rit. 2 16 A tempo (un poco più animato) f

50 17 tranquillo $\text{♩} = 100$ 2 $p < sf$ $p < sf$ $p < sf$ $p < sf$

63 Solo 18 Allegro molto $\text{♩} = 144$ Molto moderato $\text{♩} = 72$ 2 p

72 Allegro molto $\text{♩} = 144$ 19 6 Molto moderato $\text{♩} = 72$ Allegro molto $\text{♩} = 144$ G.P. pp

85 20 3 f 21 (4)

98 (8) (12) 22 (4) (6)

112 23 1 3 3 3 1 sf f

124 24 2 3 3 3 3 sfp p 3 3

136 25 2 3 3 p $cresc.$ 26 3 sf

148 27 p 3 3 3 3

156 28 sfp

[illegible]

III. The Young Prince & The Young Princess

44 Andantino quasi allegretto ♩=52

Flügel Solo

mp

7

45

14

46

poco cresc.

mf

dim.

21

4

47

6

Trumpet

48

p

sf

sf

p

37

49

8

50

7

51

mf

passionato

59

3

3

3

3

52

1

to Flügel ad lib.

1

ff

67

53

ff

mp

3

3

3

3

72

54

6

55

Lento

4

87

56

Solo

p

5

57

3

p

ff

allargando assai

Soli

100

Solo

p

6

60 Allegro molto ♩=152

61 Lento ♩=48

62 Allegro molto e frenetico

63

64 Lento ♩=36

65 Vivo ♩=88

66

67 15

68

69

70 4

71

72 Flügel 73

74 16

158 **75** **4** **Trumpet** **2** **76** **2**

f *f*

176 **77** *f* *f*

187 **78** **5** *f* *sf*

200 **79**

209 **3** *p poco cresc.* *f* *cresc.* **80** *sf*

221 **2** *dolce*

232 **81** **16** **82** **3**

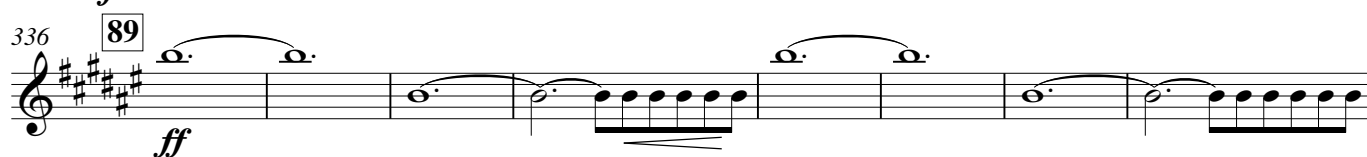
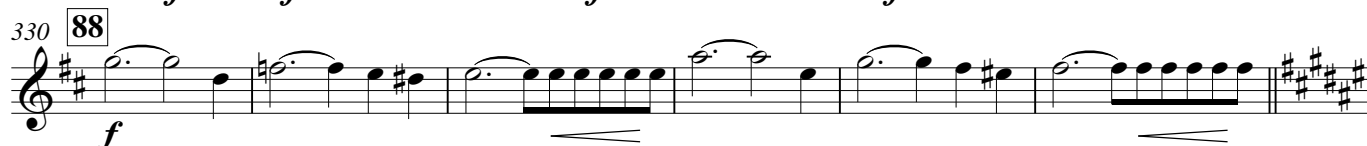
259 **Solo** *f* **2** *f* **3** *f* **2** *f* **83** *ff*

275 **84**

287 **3**

300 **85** *sf* *sf* *sf* *sf* *sf* *sf* *sf*

309 *sf* *sf* *sf* *sf*

318 **86** Allegro non troppo maestoso $\text{♩} = 56$ 

Trumpet 4 in B \flat
& B \flat piccolo

SCHEHERAZADE

I. The Sea and Sinbad's Ship

N. Rimsky - Korsakov
arr. I. Rae

Largo e maestoso $\text{♩} = 48$

in B \flat **3** *tr* **G.P.** **G.P.** **pp**

ff

12 **Lento** **3** **1** **Allegro non troppo** $\text{♩} = 56$

p **mf** **p** **(w/Hn)**

23 **1** **mf** **p** **1** **mf** **2** **pp**

31 *cresc. poco a poco*

36 **mf cresc.** **f** **3**

44 **6** **4** **6** **5** **6** **6** **1** **Solo** **mp**

65 **7** **pp**

72 **[3. Solo]** **mp** **3** **3** **3** **3** **3** **3** **3** **3** **3** **3** **3** **3** **3** **Solo** **mp**

75 **8** **4** **ff**

88 **9** *tr* *tr* *tr* **3** **3** **3** **3**

95 *tr* **3** **3** **3** **3**

101 **10** **2** **p** *dim.* **pp**

II. The Tale of the Kalandar Prince

12 Andantino $\text{♩} = 112$
con sord. 2 3 4 5 6 7 8 9 10 11 **13** senza sord. **11**

14 A tempo più mosso $\text{♩} = 144$ **15** accel. 4 **16** rit. A tempo (un poco più animato)
10 9 f

17 tranquillo 6 **18** Allegro molto $\text{♩} = 144$ Molto moderato $\text{♩} = 72$
 sf

19 6 Molto moderato $\text{♩} = 72$ Allegro molto $\text{♩} = 144$ G.P.
 pp

20 3 (4) (8) **21** (1) (4) (8)
 f

22 (12) (4) (6) **23** 1
 sf

24 3 3 3 1 3 3 3 3
 f sfp

25 2 3 3 2 3 3 (4) (6)
 p p

26 3 **27** 3 3
 sf p

28 3 3 3 3 3 3 3 3 3 3
 sfp

29 3 3 3 3 3 3 3 3 3 3
 f p

Trumpet 4

3

171 **29** *f* *p* *cresc.* **30** *sf* *f*

186 **31** **32** *f*

201 **33** Moderato assai ♩=72 *sf* *mf* *pp* *cadenza*

206 *cadenza* *pp* *cadenza*

211 **34** Allegro molto ed animato ♩=152 **35** **36** Con moto ♩=152 *f*

226 **37** 7

241 **38** ♩=144 *f*

248 **39** ♩=152 *f* *p* *sf* *f*

256 **40** ♩=126 *p* *sf* *p* *sf* *ff* *p*

265 **41** accelerando **42** *mf* *cresc.*

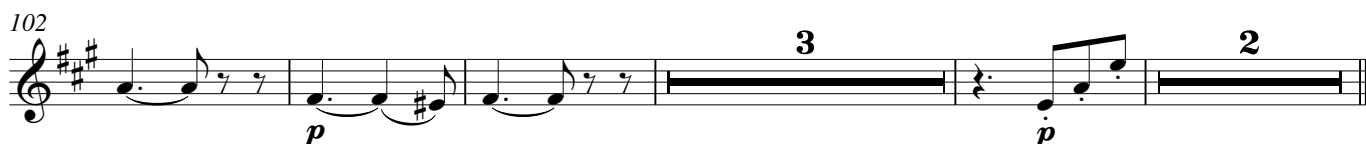
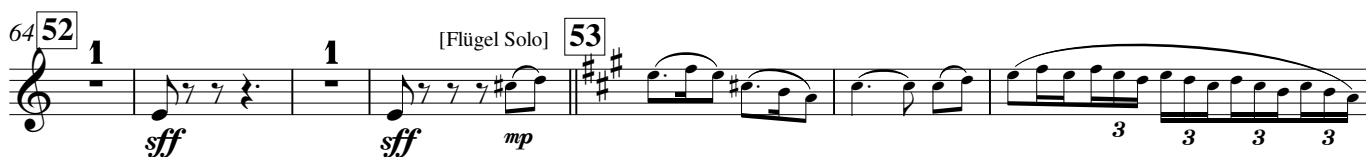
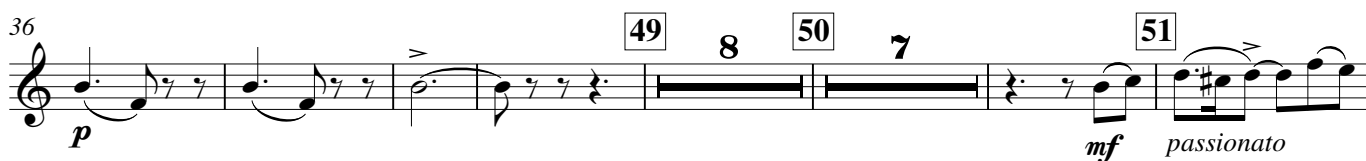
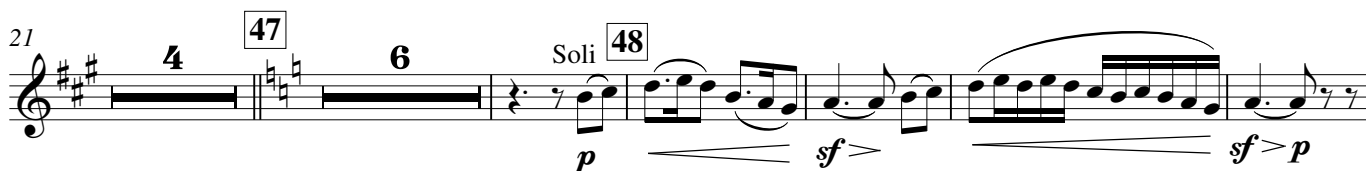
282 **43** Animato

287 *sf*

III. The Young Prince & The Young Princess

44 Andantino quasi allegretto $\text{♩} = 52$

[Flügel Solo]



IV. Festival & Shipwreck

60 Allegro molto ♩=152 *tr*

8 61 Lento ♩=48 *p* [3.] 1 62 Allegro molto e frenetico *ff*

14 63 *tr* *pp cresc.* *ff* to Picc. 4 to B \flat

28 64 Lento ♩=36 *f* [1.] 3 3 3 3 3 3 3 3 3 3 3 3 3 3 3 3 3 3 65 Vivo ♩=88 *f* 8

38 66 *mp*

47 67 15

69 68 *mf* (1)

79 69 Un poco pesante a tempo *sf* 2 4 *p* (4) (8)

96 70 4 *ff* 71

109 72 4 *f dim.* 73 *pp* (4)

132 (7) to Picc. no V.S.

142 74 16 75 16 76 8 77 [Tr.3] 3

f

190 78 13 79 8

f *sf*

216 80 3 16

f *cresc.* *sf*

240 81 16 82 16 83 3

16 16 3

275 84

ff *sf*

289 85

sf

301 8 to B \flat

sf *sf* *sf* *sf* *sf* *sf*

318 86 Allegro non troppo maestoso $\text{♩} = 56$ 87

ff *f* *sf*

326 88

sf *sf* *f*

333 89

ff

339

90

351

91 2 1 92 6

ff *fff dim.* *pp*

365

93 2

pp

371

94 Lento 4 95 Tempo primo ♩ = 54 4 4

pp

385

96 1

pp *p* *dim.*

Horn in F

SCHEHERAZADE

I. The Sea and Sinbad's Ship

N. Rimsky - Korsakov

arr. I. Rae

Largo e maestoso $\text{♩} = 48$

3 G.P. **1** G.P. **Lento** **2** con sord.

ff **pp** **p** **>**

16 [Tr.] **3** **3** [Tr.] **1** **Allegro non troppo** $\text{♩} = 56$

p **senza sord.** **mf**

20 **p**

28 **2** **pp cresc. poco a poco**

33 **3** **3** **f**

41 **6** **4** Solo **dolce**

53 **3** **5** Solo **3** **6** Solo **3**

68 **7** **4** **8** **pp** **f**

79 **ff**

84 **9**

89 **3**

97

101 **10**

104

p

dim.

con sord.

Detailed description: This image shows a page of a musical score for 'The Swan' by Camille Saint-Saëns. It contains three staves of music. The first staff starts at measure 97 and ends with a double bar line. The second staff starts at measure 101, marked with a box containing the number '10', and features a piano (*p*) dynamic. The third staff starts at measure 104 and includes a decrescendo (*dim.*) and the instruction 'con sord.' (con sordina). The music is written in treble clef with a key signature of one sharp (F#). The notation includes various note values, rests, and articulation marks like accents and slurs.

II. The Tale of the Kalandar Prince

12 Andantino ♩ = 112
con sord. (4) (8) (11) **13** senza sord. 9

21 rit. **14** A tempo più mosso ♩ = 144 (8) (9) **15** Solo

37 accel. rit.

45 **16** A tempo (un poco più animato) **13** **17** tranquillo ♩ = 100 Solo

64 **18** Allegro molto ♩ = 144 1 3 Molto moderato ♩ = 72 3 Allegro molto ♩ = 144 3

74 **19** 3 3 3 3 2 Molto moderato ♩ = 72 Allegro molto ♩ = 144 G.P. 3 3

85 **20** [Tr 3.4.] 3 4 (4) **21** (4) (8) (12)

106 **22** (4) (6) **23** 1 Solo 3 3

3

[illegible]

223 **36** *Con moto* ♩=152

f *mf*

236 **38** ♩=144

f

245 **39** ♩=152

ff

252 **40** ♩=126
8

p *sf* *f* *sf*

271 *Solo* ♩=112 **41** *accelerando* **42**

p *cresc.* *f*

284 **43** *Animato*

sf

III. The Young Prince & The Young Princess

44 *Andantino quasi allegretto* ♩=52

8 **45** 11

20 **46** 1 **47**

pp *p* *sf* *p*

28 **48**

sf *p* *p* *sf* *p* *sf* *p*

5

105

2

p

3 **3** **3** **3**

1

IV. Festival & Shipwreck

60 Allegro molto ♩=152 4 1 61 Lento ♩=48 3 62 Allegro molto e frenetico

15 2 tr tr ppp p tr tr ff

27 64 Lento ♩=36 65 Vivo ♩=88 ff sf ppp f dim.

36 66 (4) (8) pp

49 (12) (15) 67 f

60 68 8 10 3 69 Un poco pesante 3 mf fp

93 a tempo 70 1 71 p f sf ff dim. f

110 72 ff

119 73 dolce

136 74 3 3 3 3 pp

158 75 4 mp 3 mp

173 76 3 77 3 mp

186 **f** 3 **78** **f**

197 2 2

208 **79** **f** **p** poco cresc. **f** cresc. **sf** dolce **80** 2

224

237 **81** **pp**

248 **82** 16 **cresc. poco a poco**

272 **83** **ff**

282 **84** 1

294 (4) (6) **85** **sf sf sf sf sf sf**

307 **sf sf sf sf sf sf**

318 **86** Allegro non troppo maestoso $\text{♩} = 56$ **ff** **f**

323 **87** **V.S.**

330 **88**

f

336 **89**

ff

343 **90**

ff

349 **91**

fff dim.

357 **92**

p dolce

365 **93**

fff

368 **94** Lento **2** con sord.

fff

373 [Tr.1] **95** Tempo primo ♩ = 54

pp

378

pp

384 **96**

pp *p* *dim.*

SCHEHERAZADE

N. Rimsky - Korsakov

arr. l. Rae

G.P.

G.P.

G.P.

ff

Lento

[Tr. I.]

p

mf

pp

mp

Allegro non troppo ♩.=56

f

p

pp *cresc. poco a poco*

più cresc.

f

p

p

p

ff

p

ff

p

dim.

pp

II. The Tale of the Kalandar Prince

12 Andantino $\text{♩} = 112$ 11 13 con sord. senza sord. 2

23 14 Solo $\text{A tempo più mosso } \text{♩} = 144$ *p*

32 15 accel. rit. *sfp sfp sfp sfp*

46 16 A tempo (un poco più animato) *sf f*

60 17 tranquillo $\text{♩} = 100$ 4 18 Allegro molto $\text{♩} = 144$ 3 Molto moderato $\text{♩} = 72$ 2. *p f*

72 Allegro molto $\text{♩} = 144$ 1 19 6 Molto moderato $\text{♩} = 72$ 2. *f*

82 Allegro molto $\text{♩} = 144$ 1 G.P. 20 [Tr 3.4.] 8 21 3 *f*

101 2 22 1 3 *f*

116 23 5 24 2 3 *sf f pp < mf*

134 25 2 26 6 *pp < mf p cresc. 3 3 3 3 sf*

151 27 4 28 2 3 *p sf p < f*

170 29 2 30 Soli *p < f p cresc. 3 3 3 3 f*

182 31 4 *pp 3 3 3 3*

194 32

202 33 Moderato assai $\text{♩} = 72$

207 cadenza

219 35 36 Con moto $\text{♩} = 152$

242 39 $\text{♩} = 152$

255 Solo 40 $\text{♩} = 126$

266 41 accelerando $\text{♩} = 112$

275 42 43 Animato

III. The Young Prince & The Young Princess

44 Andantino quasi allegretto ♩=52

14

23

29

45

46

47

48

49

p

poco cresc.

mf

dim.

p

pp

p

sf > *p*

sf > *p*

sf >

sf >

44 **50**
pp *sempre pp*

53 **51**
p 3 3 3 3

59 **52** *Soli*
ff *p*

67 **53** **54**
ff *p* *mp* *cantabile*

78 **55** *Lento* **56** 1 2
pp *mp* *p*

89 **57** *allargando assai*
pp *p* *f* *mf*

102 **58**
p

IV. Festival & Shipwreck

60 *Allegro molto* ♩=152
ff *sf* *mf*

8 **61** *Lento* ♩=48 [Tr.] **62** *Allegro molto e frenetico*
mf *ff*

14 **63** 4 2
dim. *p cresc.*

26 **64** *Lento* ♩=36 **65** *Vivo* ♩=88
ff *fff* *f* *dim.* *pp*

38 **66** 16 **67** 1 1 1
f

69 **68**
mf

81 **69** **2** **Un poco pesante** **a tempo** **3**

sf *f*

97 **70** **4** **71** **1**

f *sf* *f*

112 **72** **3** **73** **16**

f *sf* *f dim.*

142 **74** Solo

p

150

158 **75** **3** **1** **76** **77** **f**

f *p* *f*

187 **78** **7** **79** **f** *p poco cresc.* **f**

f

204 **80** **3** **81** **pp**

cresc. *sf* *mp*

233 **82** **16**

cresc. poco a poco

272 **83**

ff

281 (2) (3) (4) **84**

298 **85**

sf sf sf sf sf sf sf sf

312 **86** Allegro non troppo maestoso $\text{♩} = 56$

sf sf sf sf ff sf sf sf

323 **87** Soli **88**

f

336 **89** Solo **90** *tr*

ff f ff f ff

346 **91**

353 **92**

ff fff dim. p

363 **93**

pp

371 **94** Lento **95** Tempo primo $\text{♩} = 54$

mp pp

378

385 **96**

p dim.

SCHEHERAZADE

I. The Sea and Sinbad's Ship

N. Rimsky - Korsakov

arr. I. Rae

Largo e maestoso $\text{♩}=48$

13 *ff* 3 *mf* G.P. *pp* *pp* *p* $\text{♩}=48$

14 *mp* *Lento* 1 *Allegro non troppo* $\text{♩}=56$ 3 *mf*

23 3 2 *p* *pp* *cresc. poco a poco*

36 3 *più cresc.* *f* *p*

45 1 4 *p*

53 5

60 6

68 7 5 8 *p sempre* *f*

79 9 *ff*

90

100 10 1 *p* *dim.* *pp*

II. The Tale of the Kalandar Prince

12 Andantino $\text{♩} = 112$ 13 con sord. senza sord. 2

23 14 A tempo più mosso $\text{♩} = 144$ 15

36 accel. rit. 16 A tempo (un poco più animato)

50 17 tranquillo $\text{♩} = 100$

63 18 Allegro molto $\text{♩} = 144$ Molto moderato $\text{♩} = 72$

72 Allegro molto $\text{♩} = 144$ 19 Molto moderato $\text{♩} = 72$

82 Allegro molto $\text{♩} = 144$ G.P. 20 [Tr 3.4.] 21

101 22

115 23 24

131 25 26

145 27 28

163 29

p *sf* *pp* *mf* *f* *ff* *cresc.*

178 30 Soli *f*

187 31 *pp* 32 *f*

200 33 Moderato assai ♩=72 *sf mf* *cadenza* *pp*

207 *cadenza* *pp* *cadenza* 34 Allegro molto ed animato ♩=152 *pp*

219 35 *f* 36 Con moto ♩=152 *mf* 37 *mf*

240 38 *f* *f* *f* 39 ♩=152 *f*

252 *p* *sf* *f* 40 *p* *f* *p* *f* *sf* *p* ♩=126

264

271 ♩=112 41 accelerando *pp* *p* 42 *cresc.* *f*

283 43 Animato *sf*

III. The Young Prince & The Young Princess

44 Andantino quasi allegretto ♩=52

45

p

13

46

poco cresc. *mf* *dim.* *p* *pp*

23

47

p *< sf >* *p* *< sf >* *<* *>* *1*

32

48

p *sf >* *p* *sf >* *4* *49* *pp* (4)

45

50

(4) *sempre pp*

54

51

p 3 3 3 3 3 3

59

3 3 Soli 52

65

53

ff > *p* *ff >* *p*

74

54

mp cantabile 3 3 3 3

80

55 Lento

pp *mp* *p* 1 56 3

90

57

pp *p* *<* *f* *>* *mf* *allargando assai*

102

p 1 1

IV. Festival & Shipwreck

60 Allegro molto ♩=152 *ff* *sf* *mf* 61 Lento ♩=48 *mf*

10 62 Allegro molto e frenetico *ff* *dim.* 4

22 63 2 *p cresc.* *ff* *sf* 64 Lento 2

30 65 Vivo ♩=88 *f* *dim.* 66 16 *pp* 67 *f* 1

58 68 1 1 1

73

83 69 2 Un poco pesante *sf* *f* a tempo 3

97 70 *f* *sf* 71 4 *f*

109 72 1 *f* *sf* 3

122 73 1 1 1 2 *f dim.* *pp*

134 74 16

158 **75** *fp* *fp* *f*

174 **76** *p* *sf* *f*

191 **78** *f*

205 **79** *f* *p poco cresc.* *f*

217 **80** *cresc.* *sf* *p*

232 **81** *pp*

244 *cresc. poco a poco*

256 **82** *mf*

271 **83** *ff* *ff* *1*

280 **84** *(4)* *2* *2*

292 (4) (8) 85 *sf sf sf sf sf sf sf*

307 *sf sf sf sf sf sf*

318 86 Allegro non troppo maestoso $\text{♩} = 56$ 2 87 Soli *ff sf sf sf f*

327 88 *f*

335 89 Solo 90 *ff*

346 91

352 1 2 92 *ff fff dim. p*

362 93 *pp*

368 1 94 Lento *mp* 1

375 95 Tempo primo $\text{♩} = 54$ *pp*

380

385 96 *p dim.*

SCHEHERAZADE

I. The Sea and Sinbad's Ship

N. Rimsky - Korsakov

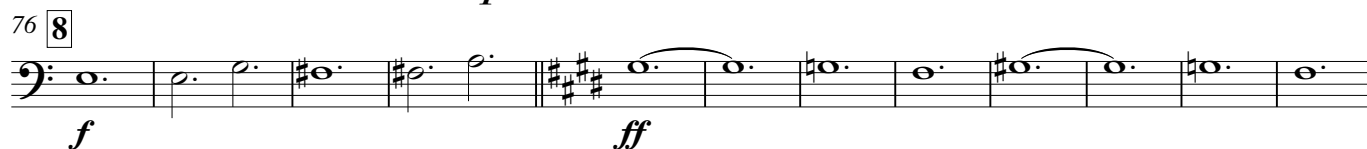
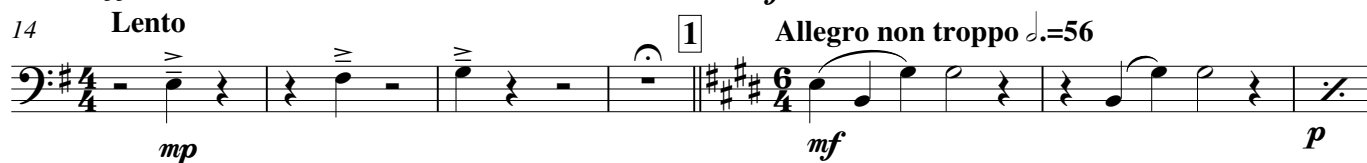
arr. I. Rae

Largo e maestoso $\text{♩}=48$

G.P.

G.P.

2



II. The Tale of the Kalandar Prince

12 Andantino $\text{♩} = 112$ 13 9 *rit.* 14 A tempo più mosso $\text{♩} = 144$

30 15 *acc.* *rit.*

46 16 A tempo (un poco più animato)

59 17 tranquillo $\text{♩} = 100$ 18 Allegro molto $\text{♩} = 144$ Molto moderato $\text{♩} = 72$

72 Allegro molto $\text{♩} = 144$ 19 Molto moderato $\text{♩} = 72$

81 Allegro molto $\text{♩} = 144$ 20 [Tr 3.4.] G.P. (4) 21 (8)

95 6 (1) (5) 22 (1) (6) 23 5

122 24 2

133 25 3 *cresc.*

144 26 6 27 4 28 3

163 29 2 3

176 30 2 3

188 [31] 8 [32] 33 Moderato assai $\text{♩}=72$

203 *cadenza* *cadenza* *cadenza*

211 [34] Allegro molto ed animato $\text{♩}=152$ [35] [36] Con moto $\text{♩}=152$

231 [37] (4) (8) [38] $\text{♩}=144$

248 [39] $\text{♩}=152$ [40]

262 $\text{♩}=126$

269 $\text{♩}=112$ [41] accelerando [42] 1

284 [43] Animato

III. The Young Prince & The Young Princess

[44] Andantino quasi allegretto $\text{♩}=52$ [45]

15 [46] [47]

27 [48] 1 1 1 4

40 **49**

pp

48 **50** **2** **51**

sempre pp *p* 3 3

59 **52**

p *ff* *p*

67 **53**

ff *p*

75 **54** **55** Lento

p *pp* *mp*

85 **56** **57** 3

p *pp*

98 **allargando assai** **3**

p *f* *mf* *p*

IV. Festival & Shipwreck

60 Allegro molto ♩=152

ff *sf* *mf* **61** Lento ♩=48 *mf*

10 **62** Allegro molto e frenetico **63**

ff *p* *cresc.*

25 **64** Lento ♩=36 **65** Vivo ♩=88 **66** 16

ff *sf*

54 **67**

f

70 **68** 16 3 Un poco pesante a tempo 1 **69**

f *p* *f*

101 **4** **70** **5** **71** **7**

sf *f* *sf*

126 **72** **16** **73** *pp*

154 **74** **8** (4) (8) *p*

174 **75** **3** **1** **76** **3**

mp *sf* *f*

190 **77** **5** *f* *sf*

208 **78** **2** *f* *p poco cresc.* *f*

218 **79** **3** *cresc.* *sf* *p* $\langle \rangle$ $\langle \rangle$ $\langle \rangle$ $\langle \rangle$

235 **80** **2** *pp*

248 **81** *cresc. poco a poco* *mf*

260

271 **82** *ff*

278 (1) (4) **83** **2** **2**

V.S.

291 (4) (8) **84**

sf sf sf sf sf

306

sf sf sf sf sf sf sf sf

318 **85** *Allegro non troppo maestoso* $\text{♩} = 56$

ff f e maestoso

325 **86** *Soli*

f f

332 **88**

ff

342 **89**

ff

350 **90**

f

353

ff fff dim. pp

359 **91** **92**

pp

367 **93** *Lento*

mp

375 **94** *Tempo primo* $\text{♩} = 54$

pp

383 **95**

pp mp pp

SCHEHERAZADE

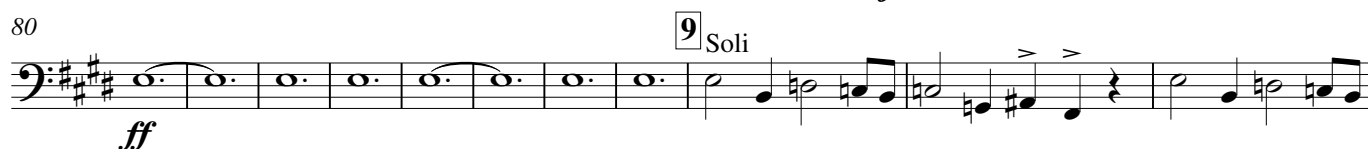
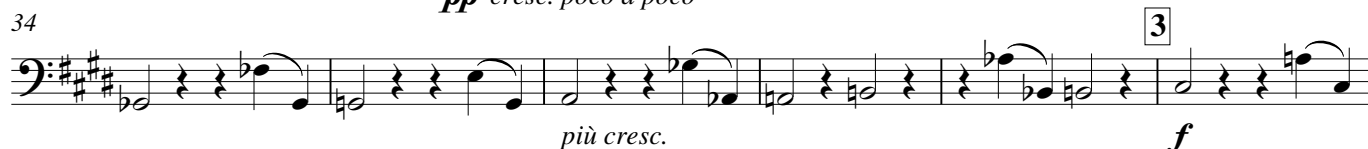
I. The Sea and Sinbad's Ship

N. Rimsky - Korsakov

arr. I. Rae

Largo e maestoso $\text{♩}=48$ 

14 Lento

Allegro non troppo $\text{♩}=56$ 

II. The Tale of the Kalandar Prince

12 Andantino $\text{♩} = 112$ 11 13 9 [3.] rit. 14 A tempo più mosso $\text{♩} = 144$ (4)

30 (8) (10) 15 2 2 accel. rit. sf sf sf sf

46 16 A tempo (un poco più animato) (4) (8) (12)

59 (14) 17 tranquillo $\text{♩} = 100$ 6 18 Allegro molto $\text{♩} = 144$ Molto moderato $\text{♩} = 72$

72 Allegro molto $\text{♩} = 144$ 19 [3.] Molto moderato $\text{♩} = 72$

81 Allegro molto $\text{♩} = 144$ G.P. 20 [Tr 3.4.] (4) (8)

94 21 (4) (7) 22 4 6 23 1

118 24 (2)

131 25 3 3 cresc.

142 26 27 4

156 28 2 2

168 29 2 3 cresc.

p *f* *sf* *dim.* *pp* *f* *mf* *cresc.*

179 **30** *sf* **31** *pp* **32** *f* *3*

198 *3* **33** Moderato assai $\text{♩}=72$ *mf* *cadenza* *pp*

206 *cadenza* *pp* *cadenza* **34** Allegro molto ed animato $\text{♩}=152$ *pp*

218 **35** *3* **36** Con moto $\text{♩}=152$ *f* **37** *7* **38** *8* *1* $\text{♩}=144$ *f* *[3.]* *f* *1*

246 **39** $\text{♩}=152$ *f* *f* *p < sf* *f* *p < sf* *p < sf*

261 **40** $\text{♩}=126$ *sf* *p* *3* *3* *3* *3*

269 $\text{♩}=112$ **41** accelerando *p* *cresc.*

279 **42** **43** Animato *1* *sf*

III. The Young Prince & The Young Princess

44 Andantino quasi allegretto $\text{♩}=52$ **45** *3*

12 *p* *poco cresc.* **46** *2* *p* *pp*

23 **47** *p* *sf* *p* *sf* *p* *1*

32 **48** **1** **1** **2** **49** (4)

mf *p* *pp*

44 **50** (4)

sempre pp

55 **51** **4**

p **3** **3** **3** **3**

64 **52** **53**

p *ff* *p* *ff* *p*

72 **54**

p

80 **55** Lento **56**

pp *mp* *p*

88 **57** **4** **allargando assai**

pp *p* *f*

101 **1** **1**

mf *p*

IV. Festival & Shipwreck

60 Allegro molto ♩=152 **61** Lento ♩=48

ff *sf* *mf* *mf*

10 **62** Allegro molto e frenetico **2**

ff *p*

20 **63**

cresc. *ff* *ff*

Bass Trombone

5

29 **64** Lento **65** Vivo $\text{♩} = 88$ **66** 16 **67** *f*

62 **68** 2 *mf*

78 8 **69** 3 Un poco pesante a tempo **70** 1 *f*

99 4 **71** 5 *f*

118 **72** 7 **73** *sf* *pp*

136 **74** 16 **75** (4) *fp*

162 (4) 7 **76** (4) (8) *fp* *p* *fp*

182 **77** 7 *sf* *f* **78** 5 *sf*

202 **79** *f* *p poco cresc.*

213 **80** 3 8 *cresc.* *sf*

232 **81**
p *pp*

244
cresc. poco a poco

252 **82**
mf

260

268 **83**
ff

276 **84**
 (1) (4)

288 (4) (8)

300 **85**
sf sf sf sf sf sf sf

309
sf sf sf sf sf

86 Allegro non troppo maestoso $\text{♩} = 56$

318 *Soli*

ff *f e maestoso*

325 **87** **5** **88**

f

336 **89**

ff

344 **90**

1

351 **91**

f

354

fff dim.

363 **93** **5** **94** Lento

pp *mp*

373 **95** Tempo primo $\text{♩} = 54$

pp

382 **96**

mp *pp*

Tuba

SCHEHERAZADE

I. The Sea and Sinbad's Ship

N. Rimsky - Korsakov

arr. I. Rae

Largo e maestoso $\text{♩} = 48$

3 *tr* G.P. G.P.

ff *mf*

12 **2** **Lento** **3** **1** Allegro non troppo $\text{♩} = 56$

mf *p*

25 **2** **3** *pp* cresc. poco a poco

36 **3** *f* più cresc. *pp*

46 *con sord.* **1** **4** **2** *pp*

56 **5** *pp* **6** **2** *pp*

66 **7** *p* senza sord. **3**

75 **8** *p* *f*

80 *ff*

87 **9** Soli *>* *>*

92

100 **10** *pp* *pp*

II. The Tale of the Kalandar Prince

[12] Andantino $\text{♩} = 112$ Solo
 p dolce ed espressivo
 11 **[13]**
 20 **[14] A tempo più mosso** $\text{♩} = 144$ **[15]** 9 **accel. rit.** 2 2
 46 **[16] A tempo (un poco più animato)**
 sf f
 59 **[17] tranquillo** $\text{♩} = 100$ 2 **[18] Allegro molto** $\text{♩} = 144$ 3 **Molto moderato** $\text{♩} = 72$ 1 2 3 p f sf dim.
 71 **[19] Allegro molto** $\text{♩} = 144$ 2 3 3 3 3 p pp f sf dim.
 80 **Molto moderato** $\text{♩} = 72$ 2 3 **[20] Allegro molto** $\text{♩} = 144$ G.P. 9 **[21]** 12 p pp
 106 **[22]** 6 **[23]** 1 f sf f
 124 **[24]** 3 3 sf mf mf
 138 **[25]** 3 7 **[26]** 8 **[27]** 8 cresc. sf

160 **28**

mf *f* *mf*

170 **29**

f *mf* *cresc.*

178 **30**

sf *f*

188 **31**

pp *f*

199 **33** Moderato assai $\text{♩} = 72$

sf *cadenza* *cadenza* *cadenza*

211 **34** Allegro molto ed animato $\text{♩} = 152$

sf *pp* *cresc.*

223 **36** Con moto $\text{♩} = 152$

(5) (6) (9) **37**

f *mf*

238 **38** $\text{♩} = 144$

f *f* **39** $\text{♩} = 152$

f *f*

251 **40** $\text{♩} = 126$ [Trb.]

p *sf* *f* *p* *sf* *p* *sf* *sf* *p*

264 $\text{♩} = 112$

p *pp*

273 **41** accelerando

p *cresc.* **42**

282 **43** Animato

f *sf*

III. The Young Prince & The Young Princess

44 Andantino quasi allegretto $\text{♩} = 52$

45 8

46 8

47 1 1 3

48 *p* *sf* *p* *sf* *p* *dim.* *pp*

49

50 *sempre pp*

51 *p*

52 (4) (8) *p* *ff*

53 *p* *ff* *p*

54 1 1 2 4

55 Lento 4

56 8 **57** 3 *allargando assai* *p* *f* *mf* 3

106 *Solo scherzando* *p* 3 3 3 3

IV. Festival & Shipwreck

60 Allegro molto ♩=152 *tr*
ff *sf* *mf* *ppp*

61 Lento ♩=48
ppp

62 Allegro molto e frenetico
ff *dim.*

63
p *cresc.*

64 Lento ♩=36 **65** Vivo ♩=88 **66** 16
ff *sff* *ppp*

67 3 **68** 16
f

69 3 Un poco pesante a tempo **70** 2
f *p* *f*

71 4 **72** 7
sf *f* *sf*

73 1 1 1 1
pp

74
pp

75 3 **76** 5 5 2
sf *sf* *sf* *sf*

77 5 **78** 13
sf *f* *sf*

208 **79**

f *p poco cresc.* *f* *cresc.* *sf*

80

221 **3**

p

240 **81**

pp

248

cresc. poco a poco

256 **82**

p

264

p

272 **83**

ff

280 **84**

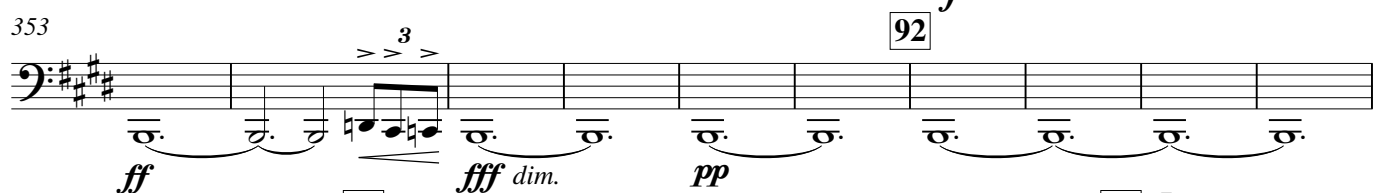
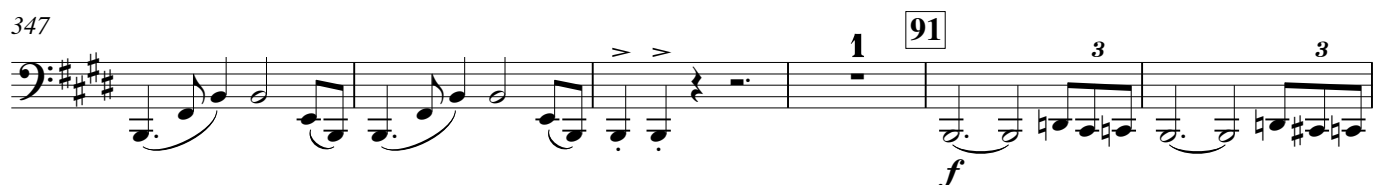
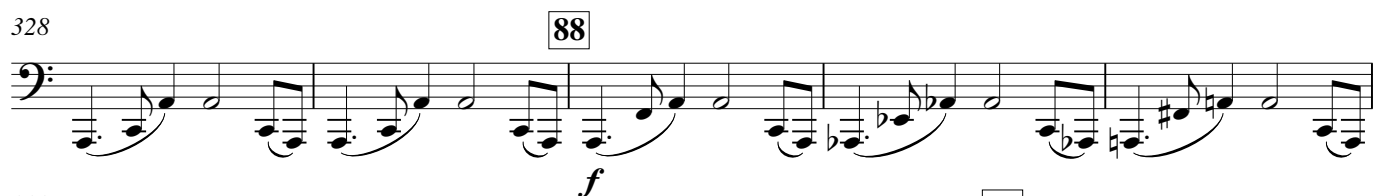
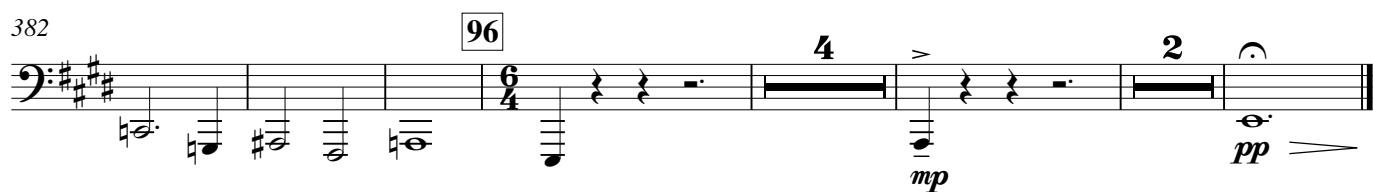
p

296 **85**

p

308

sf

318 **86** Allegro non troppo maestoso $\text{♩} = 56$ 375 **95** Tempo primo $\text{♩} = 54$ 

Timpani

Scheherazade

1. The Sea and Sinbad's Ship

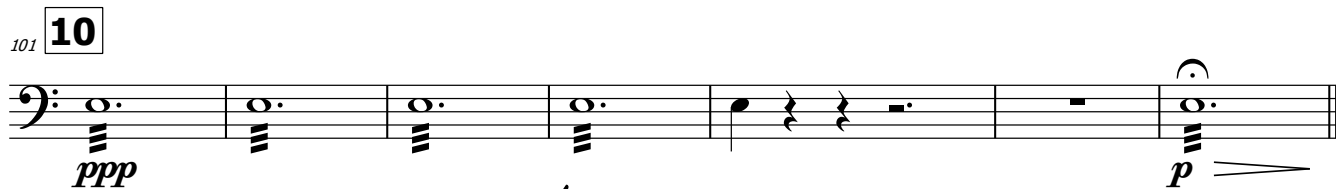
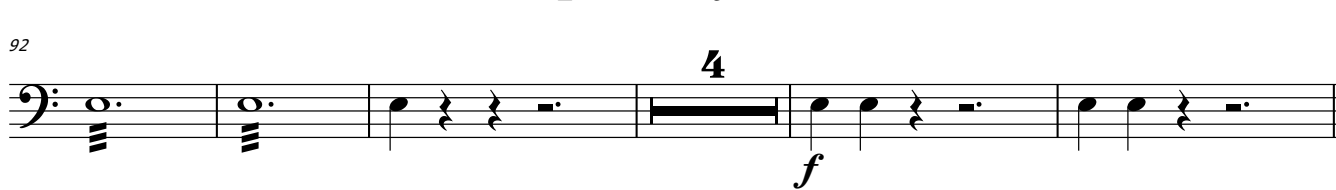
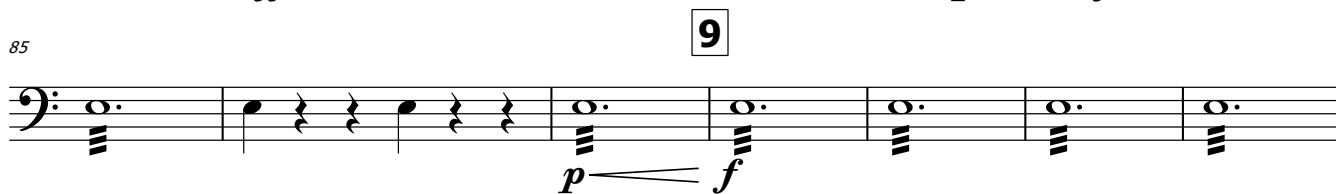
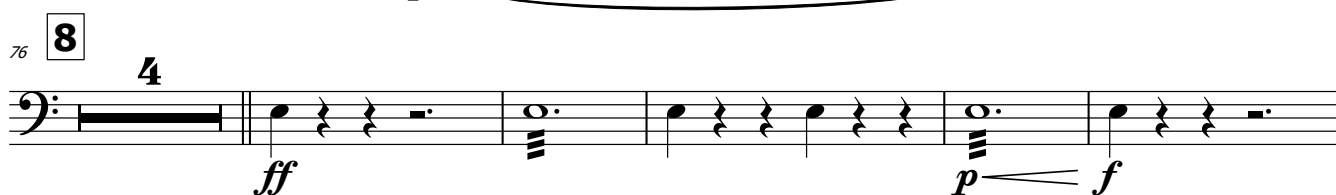
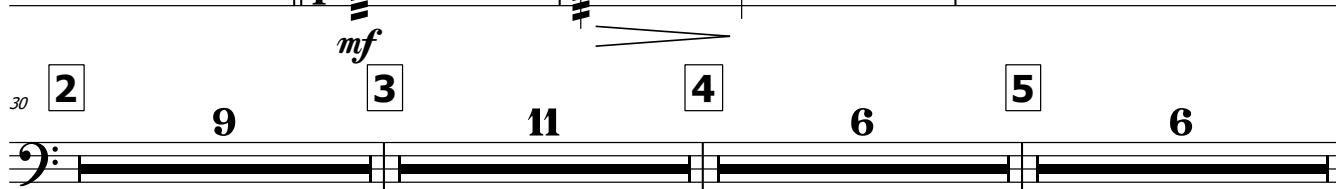
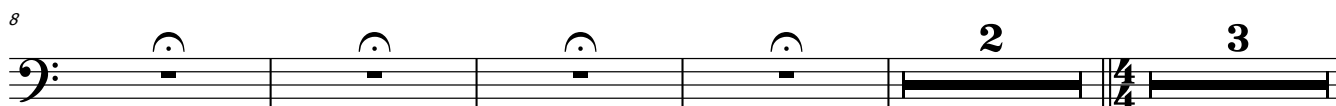
N. A. Rimsky-Korsakov

arr. Ian Rae

Largo e maestoso $\text{♩} = 48$

G.P.

G.P.



2. The Tale of the Kalandar Prince

12 Andantino ♩ = 112
Tb. 11 9

14 A Tempo ♩ = 144
Trb. 12 Hn. 12

16 46 *mf* *p* *sf* *mf*

17 53 *p* *sf* *p* *sf* *p* *sf*

18 61 Trb. 6 3 *f*

19 72 6 G.P.

20 85 9 **21** 12 **22** 6

23 112 Tr. 1.2 8 **24** *f*

25 125 13 *p* *cresc.* *f*

26 144 8 **27** 8 **28** 13 *f*

174 **29** **30**

174 175 176 177 178 179 180

p *cresc.* *mf*

Staff 174-180: Bass clef, 4/4 time. Measures 174-175: quarter notes G2, A2. Measures 176-177: eighth notes G2, A2, B2, C3 (triplets). Measures 178-179: eighth notes D3, E3, F3, G3 (triplets). Measure 180: quarter note G3.

181 **31**

181 182 183 184 185 186 187

p *mf* *p* *p*

Staff 181-187: Bass clef, 4/4 time. Measures 181-182: quarter note G2, quarter rest. Measure 183: quarter note A2, quarter rest. Measure 184: quarter note B2, quarter rest. Measure 185: quarter note C3, quarter rest. Measure 186: quarter note D3, quarter rest. Measure 187: quarter note E3, quarter rest.

192 **32** (4)

192 193 194 195 196 197 198

f

Staff 192-198: Bass clef, 4/4 time. Measures 192-195: quarter rests. Measures 196-198: eighth notes G2, A2, B2, C3 (triplets).

202 **33**

202 203 204 205 206 207 208

Staff 202-208: Bass clef, 4/4 time. Measures 202-203: quarter note G2, quarter rest. Measures 204-205: quarter rests. Measures 206-207: quarter notes G2, A2 (beamed). Measure 208: quarter note B2.

211 **34** **35** **36** Tr. 3.4 *f* **7**

211 212 213 214 215 216 217

Staff 211-217: Bass clef, 2/4 time. Measures 211-212: quarter notes G2, A2 (beamed). Measure 213: quarter note B2. Measure 214: quarter note C3. Measure 215: quarter note D3. Measure 216: quarter note E3. Measure 217: quarter note F3.

233 **37** **38**

233 234 235 236 237 238 239

Staff 233-239: Bass clef, 4/4 time. Measures 233-234: quarter notes G2, A2 (beamed). Measures 235-236: quarter rests. Measures 237-238: quarter notes G2, A2 (beamed). Measure 239: quarter note B2.

248 **39** *f* *p* *sf* *f*

248 249 250 251 252 253 254

Staff 248-254: Bass clef, 4/4 time. Measures 248-249: quarter notes G2, A2 (beamed). Measure 250: quarter note B2. Measure 251: quarter note C3. Measure 252: quarter note D3. Measure 253: quarter note E3. Measure 254: quarter note F3.

257 **40** *p* *sf* *p* *sf* *dim.* **9**

257 258 259 260 261 262 263

Staff 257-263: Bass clef, 4/4 time. Measures 257-258: quarter notes G2, A2 (beamed). Measure 259: quarter note B2. Measure 260: quarter note C3. Measure 261: quarter note D3. Measure 262: quarter note E3. Measure 263: quarter note F3.

273 **41** *pp* *cresc.* **42** *f*

273 274 275 276 277 278 279 280 281 282

Staff 273-282: Bass clef, 4/4 time. Measures 273-282: quarter notes G2, A2, B2, C3, D3, E3, F3, G3, A3, B3 (beamed).

283 **43** (4) *sf*

283 284 285 286 287 288 289

Staff 283-289: Bass clef, 4/4 time. Measures 283-288: quarter notes G2, A2, B2, C3, D3, E3 (beamed). Measure 289: quarter note F3.

3. The Young Prince and the Young Princess

44 Andantino quasi allegretto $\text{♩} = 52$ **45** **46**

8 11 5

47 **48** **49** **50**

7 8 8 7

51

4

p 3 3

52

3 3 *p* *f* *p* *p* *f* *p*

53 **54** **55** **56**

8 7 4 8

57 **allargando assai**

3 8

pp *f* *dim.*

4. The Festival at Baghdad

60 Allegro molto $\text{♩} = 152$ **61 Lento** $\text{♩} = 48$

4

62 Allegro molto e frenetico

10 *f*

16 **63** 6 5 **64** Lento $\text{♩} = 36$

sf

30 **65** Vivo $\text{♩} = 88$ 7 16 **66** 16 **67** 3

poco sf

57 3 8 **68** 16

mf

86 **69** 11 **70** 5 5 **71** 11

118 **72** 7 Tr.3 **73** 13

mf

142 **74** 16 **75** 16 **76** 8 **77** 8

190 **78** 13 **79** 8

f

216 **80** 3 16

f

240 **81** 14 **82** 16

pp

272 **83** 8 **84** 4

f

288 8 3 3 4 8

300 **85** 6

sf sf sf

315 **86** Allegro non troppo maestoso $\text{♩} = 56$ **87** 5

ff

330 **88** 6 **89** 2

f

341 **90** 2

348 **91** 3 3 3 3 3

p

352 3 3 3 3 3 3 3 3 3 3 3

354 3 3 3 3 3 3 3

dim.

*despite tutti *f*

357

92



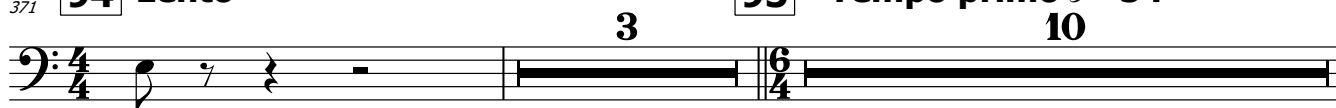
364

93



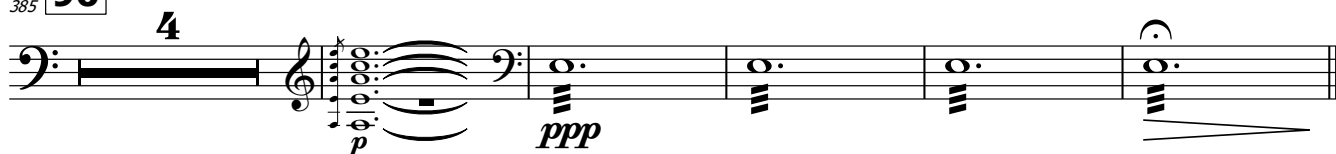
371

94 Lento

95 Tempo primo $\text{♩} = 54$ 

385

96



PERCUSSION

Scheherazade

1. The Sea and Sinbad's Ship

N. A. Rimsky-Korsakov
arr. Ian Rae

Triangle **TACET**

Tambourine **TACET**

Snare Drum **TACET**

Cymbals **TACET**

Bass Drum
Tam-tam **TACET**

2. The Tale of the Kalandar Prince

Cym. **12** **Andantino** $\text{♩} = 112$ **11** **13** **9**

Tb.

Cym. **14** **12** **15** **12**

Trb. Hn.

Cym. **16** **14** **17** **7** **2**
4

Cym. **18** **Trb.** **3** **SUS. CYM** **f** **p** **morendo**

Cym. **19** **6** **f** **p** **morendo** **G.P.**

85 **20** 9 21 12 22 6

Cym. **112** Tr. 1.2 3 3 3 3 3 3 **23** 5 *f*

122 **24** 3 6 2 *mf* *f* *mf* *f*

138 **25** 6 **26** 6 *mf pp*

152 **27** 4 8 *p*

160 **28** 3 6 2 *f* *mf* *mf*

174 **29** 6 **30** *mf p*

188 **31** 3 3 3 3 3 3 4 *p*

196 **32** 5 4 2 2 2 *sf*

208 **34** 2 8 **35** 4 3

Cym. $\left[\begin{array}{c} | \\ || \\ | \end{array} \right] \frac{36}{8}$
 10
37
 8
38

248 **39**

Timp. *f* *p* *sf* *f*

Tri.

Cym.

Tri. *p* *sf* *p* *sf* **11**

Cym. *sf* *sf* **11**

[illegible]

3. The Young Prince and the Young Princess

44 Andantino quasi allegretto J. = 52 **45**

S. D. 6 8 7 7 8 11

Tempo.

46 5 47 7 48 6

[illegible]

63

52

Tri.


Tamb.

S. D.

Cym.

p *f* *p* *f*

mf *mf*

Cym.  68 **53** 8 **54** 7 **55** 4 **56** 8

95 **57** **allargando assai**

Timp. **3** *pp* *f* *dim.*

Cym. **3** *f*

Tri. ¹⁰³ 4


Tamb. *pp* *tr*


S. D. *pp*

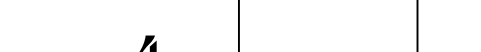
Cym. *pp*

4. The Festival at Baghdad

60 Allegro molto ♩ = 152

Tri. 

Tamb. 

Cym. 

61 Lento ♩ = 48

62 Allegro molto e frenetico

10

Tri. $\frac{6}{8}$ *f*

Tamb. $\frac{6}{8}$ *f*

Cym. $\frac{6}{8}$ *f*

15

Cym. $\frac{2}{4}$ *pp*

63

22

Tri. *pp cresc.*

Tamb. *pp cresc.*

Cym. *cresc.*

64 Lento $\text{♩}=36$ **65 Vivo $\text{♩}=88$**

27

Tri. *sf*

Tamb. *sf*

Cym. *sf*

B. D. *sf*

34

Tri. *mf*

Tamb. *mf*

Cym. *mf*

B. D. *mf*

dim.

66 **67**

34

Tamb. *pp*

Cym. *mf*


mf


58

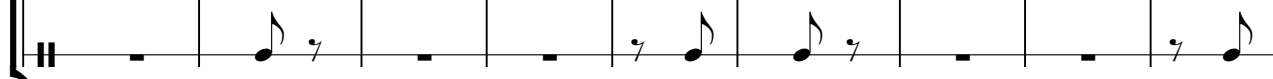
Tamb. 

Cym. 


68


Tamb. 

S. D. 

Cym. 

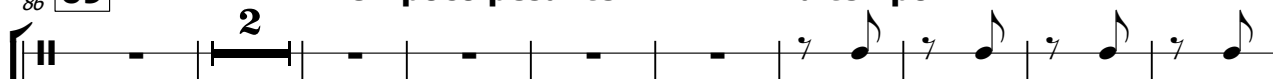
77

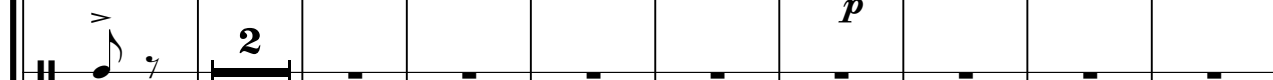
S. D. 

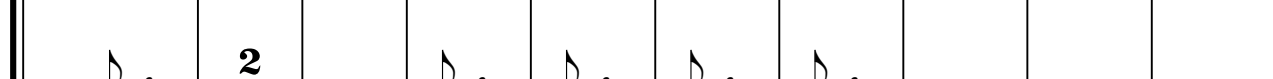
Cym. 

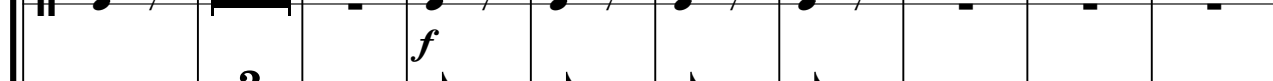
86 **69**

Un poco pesante **a tempo**

Tri. 


S. D. 

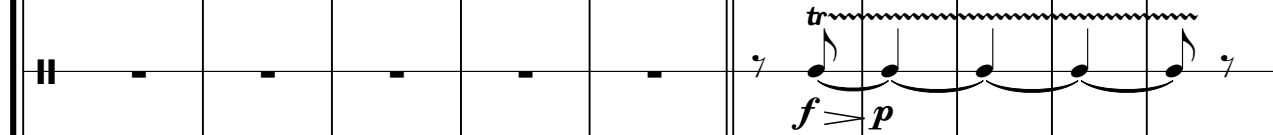
Cym. 


B. D. 


f *p*

97 **70**

Tri. 

S. D. 

Cym. 

B. D. 

f *f* *p*

107 **71** **72**

Tri.

S. D.

Cym.

B. D.

119 **73**

Tamb.

126 **74** **75**

Tamb.

142 **76** **77**

Tri.

166 **77**

Tri.

174 **76** **77**

Tri.

Cym.

B. D.

182 **77**

Tamb.

Cym.

190

Tri.

Tamb.

S. D.

Cym.

B. D.

sf

f

f

f

f

f

78

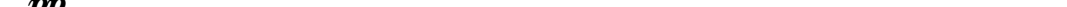
13

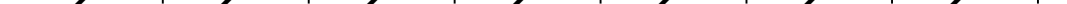
8

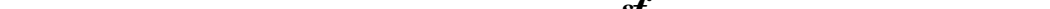
79

13

8

Tamb. 

Tamb. 

S. D.  240 **81** *tr* *sf*

82

S. D. ²⁵⁵ *tr* *sf* 3 *tr* *sf* 2 *tr* *sf*

S. D. ²⁶⁴ 3 *tr* *sf* 2 *tr* *sf*

83

S. D. ²⁷² *tr* *sf* *tr* *sf*

84

Tri. ²⁸⁰ *f* 4 8 3

Tamb. *f* 4 8 3

S. D. *f* 4 8 3 *tr* *mf cresc.*

Cym. *f* 4 8 3

B. D. *f* 4 8 3

85

Tri. ³⁰⁰ *f*

Tamb. *f*

S. D. *f* *tr*

Cym. *f*

B. D. *f*

309

Tri.

Tamb.

S. D.

Cym.

B. D.

86 Allegro non troppo maestoso $\text{♩} = 56$

318

Tri.

Tamb.

S. D.

Cym.

B. D.

87

322

Tri.

Cym.

B. D.

p

326

Tri. *tr*

Cym.

B. D. *p*

330 **88** *tr*

Tri.

Cym.

B. D. *p*

335 *(tr)* **89**

Tri.

Cym.

B. D. *p*

338 *tr*

Tri.

Cym.

B. D. *p*

342 **90** *tr*

Tri.

Cym.

B. D. *p*

346 *tr*

Tri.

Cym.

B. D.

p

349

Tri.

Cym.

B. D.

To T.-t.

91

2

2

2

tr

f

355

Cym.

T.-t.

f

92

3

6

6

93

3

6

6

371 **94** **Lento**

4

95 **Tempo primo**

10

96

8