

Serenade

I. Pezzo in forma di sonatina

P. I. Tchaikovsky Op.48
arr. I. RaeAndante non troppo $\text{♩} = 126$

In G f ff sf sf 7
 16 f Soli To B \flat 13
 36 **A** Allegro moderato $\text{♩} = 72$ 16 **B** In B \flat p $cresc.$
 58 ff p $cresc.$
 67 ff ff
 76 **C** 2 f ff to G picc.
 86 5 **D** 8 In G pp
 102 **E** $poco\ cresc.$
 107 2 $cresc.$
 114 3 f ff **F**
 123 3 ff
 131 4 $sempre\ ff$ **G** 3
 142 $mf\ cresc.$ f ff 3 2

153 *to B \flat picc.* **H** 16 *in B \flat*
p *cresc.*

175 *ff* *p* *cresc.*

184 *ff* *ff*

193 **I** 2 *f* *ff*

204 *to G picc.* 5 **K** 8 *in G*
pp

221 **L** *poco cresc.*

226 *p* *più f*

235 *cresc.* *f* *f*

241 **M** *ff* 10

255 *ff* *ff* *p* *con sord.*

261 *open* 2 *f* *ff* 3

269 2

275 *Andante non troppo*
f *ff* *sf* *sf* 10 *fff*

II. Valse

Moderato. Tempo di Valse

19 rit. **A** a tempo

26 stringendo rit. a tempo

36 *ff* *p* *f > p*

46 *mp* *cresc.* *mf* *f* **B**

56 *tr* To Coda 2 5

69 rit. a tempo **C** 7 *f* *mf* *cresc.*

83 *dim.* 7

97 *mf* *cresc.* *ff* *dim.*

105 **D** *p*

113 19 rit. **E** a tempo D.S. al Coda *f*

Coda 177 5 2 **F** 8 *f*

198 *dim.* *pp* *pp* 2

209 8 *pp* 2

III. Elegia

$\text{♩} = 69$

20 11

p espr. *cresc.* 3

38 *tr* *mf* *p* 12

57 *ff* *mf* 3 3 3

69 **B** 11 *cresc.* *f* *ff*

87 **C** 6 *mf cresc.*

101 Cadenza 5 *ff* *sf* *sf* Tempo I 12

123 4 *mf* 6

137 **D** 2 *p* *mp* *p* *f dim.*

145 10 *sf* *pp* *dim.* 3

Andante $\text{♩}=72$

IV. Finale

18 p 17

44 Allegro con spirito $\text{♩}=144$ 11 4 **A** p f

66 ff ff f mf 4 8

80 12 **B** to B \flat picc. 24 in B \flat f

116 **C** 16 f

143 **D** 7 ff 3 f

161 **E** 16 4

188 **F** 4 4 Solo pp

216 f to G picc. 7

232 **G** 3 in G f 2 2

245 4

256 **H** 9 ff

271 **J**

f *ff*

284 **K**

f *mf* 24

320 **L**

f 16

345 **M** **N**

f *ff* 4 2 8

366

373

382 **Molto meno mosso**

sf *ff* 13 3

407 **stringendo** **Tempo I**

3

420 **Più mosso**

4 8

438

4

Serenade

I. Pezzo in forma di sonatina

P. I. Tchaikovsky Op.48
arr. I. Rae

Andante non troppo $\text{♩} = 126$

f **ff sf sf** **7**

16 **Soli** **f** **13**

36 **A Allegro moderato** $\text{♩} = 72$ **16** **B** **p** **cresc.**

58 **ff** **p** **cresc.**

67 **ff** **ff**

76 **C** **2** **f** **ff**

86 **5** **8** **D** **pp**

102 **E** **poco cresc.**

107 **2** **cresc.**

114 **3** **f** **ff** **F**

123 **3** **ff**

131 **4** **sempre ff** **G** **3**

142 **mf cresc.** **f** **ff** **3** **2**

www.merrittshillmusic.com

II. Valse

Moderato. Tempo di Valse 19 rit. **A** a tempo \S

26 stringendo rit. *ff* a tempo *p*

36 *f > p*

45 *mp cresc.* *mf* **B** 2 *tr* *f*

56 *tr* To Coda 2 5 *f*

70 rit. a tempo **C** 7 *mf cresc.*

83 7 *dim.*

97 *mf cresc.* *ff* *dim.*

105 **D** *p*

113 19 rit. **E** a tempo *f* D.S. al Coda

177 Coda 5 **F** 2 8

197 *f* *dim.* *pp* 2

208 8 2 *pp*

III. Elegia

$\text{♩} = 69$

20 11

p espr. *cresc.*

37 **A** 12

mf *p*

57 3 3 3

ff *mf*

69 **B** 10

cresc. *f* *ff*

87 **C** 6

mf cresc.

101 Cadenza 5 Tempo I 12

ff *sf* *sf*

123 4 6 **D** 2

mf

139 *p* *mp* *p* *f dim.*

145 10 3

sf *pp* *dim.*

IV. Finale

Andante ♩=72

18 17

p

43 11 4 **A**

p *f*

65 *ff* *ff* *f* 4

78 8 12 **B** 24 *mf* *f*

113 **C** 16

140 **D** 7 *f* *ff*

156 3 4 **E** 16 *f*

184 4 4 **F** 4 Solo *pp*

216 *f* 7

232 **G** 3 2 2 *f*

245 4

256 **H** 9 *ff*

271 **J**

f *ff*

284 **K**

f *mf* 24

320 **L**

16 *f*

345 **M** **N**

f *ff* 2 8

366 w/ Tr.2/3

373

f *ff*

382 **Molto meno mosso**

13 *f* *ff*

407 **stringendo** **Tempo I**

f *ff* 3

419 **Più mosso**

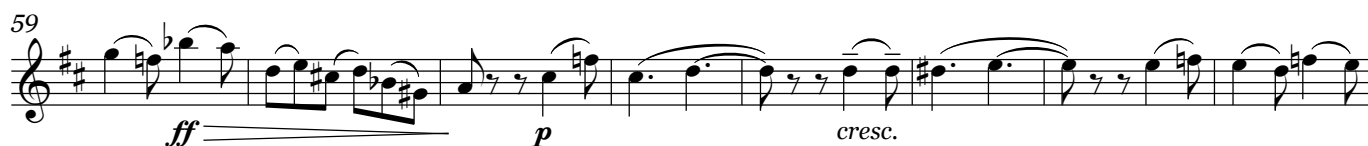
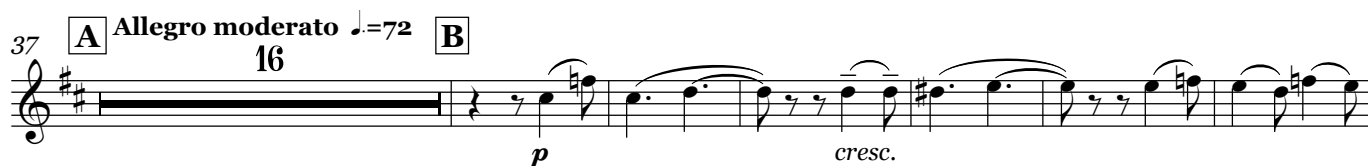
4 8

438

4

Serenade

I. Pezzo in forma di sonatina

P. I. Tchaikovsky Op.48
arr. I. RaeAndante non troppo $\text{♩} = 126$ 

123 **3**
ff

130

136 **2** **G**
p cresc. *mf cresc.*

143 *f* *ff* **2**

150 *ff*

156 **H** **16**
p *cresc.* *ff*

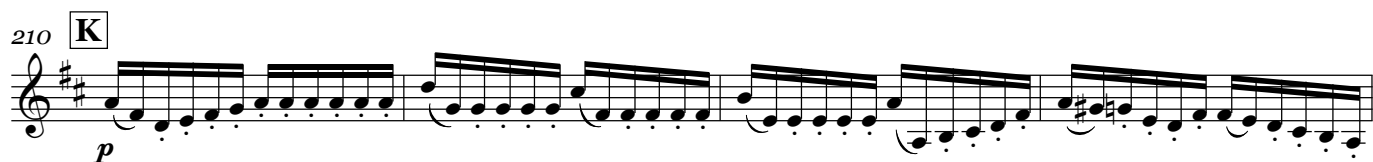
179 *p* *cresc.*

187 *ff* *ff*

195 **I**
f

203 **2**
ff

210 **K**



p

214



218 **L**



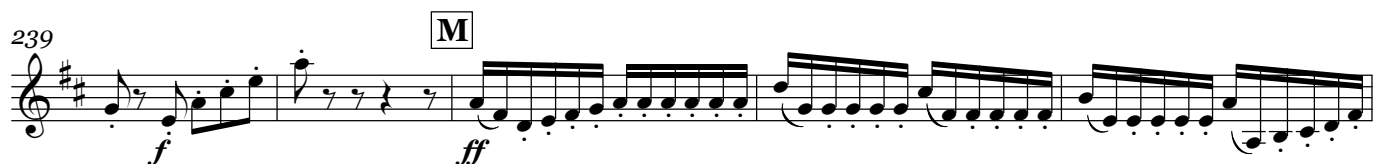
p cresc.

233



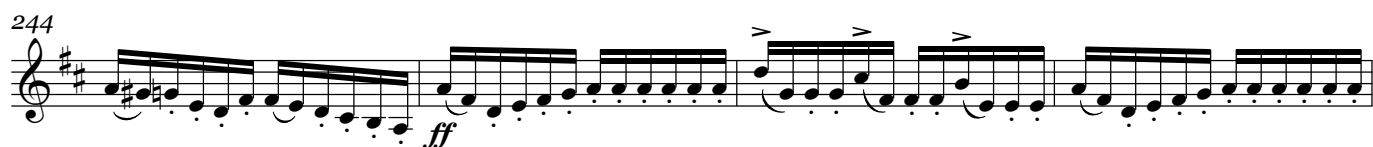
cresc. f

239 **M**



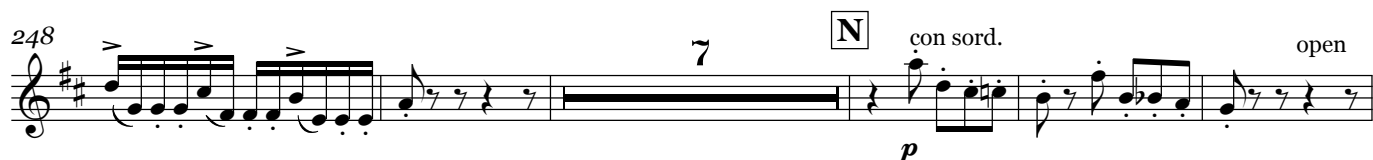
f ff

244



ff

248 **N**



p con sord. open

260



f ff

269



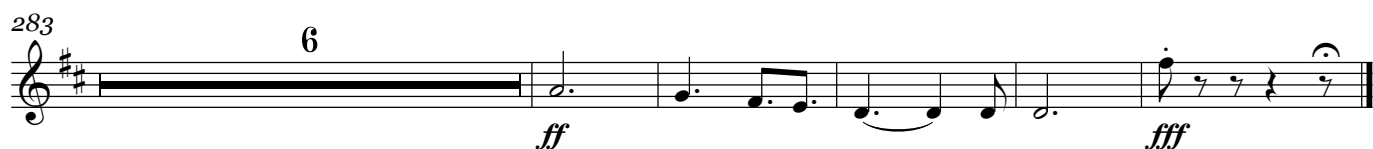
Andante non troppo

275



f ff sf sf

283



ff fff

II.

Moderato. Tempo di Valse

rit. **A** a tempo

19 *ff* 3

26 *stringendo* rit. a tempo *p*

36 *f > p*

45 *mp cresc.* *mf*

54 **B** 10 To Coda Θ 3 rit. *f*

72 a tempo **C** *mf* *mf*

81 *cresc.* 3

91 *mf* 4 *ff*

102 *dim.*

111 **D** *p* *p* *cresc.*

121 *mf*

128 **E** a tempo **D.S. al Coda**

f *f*

177 **Coda**

f

188 **F**

f

206 *pp* *pp*

215 *pp*

III.

Elegia $\text{♩} = 69$ 20

mp molto cantabile *cresc.* *dim.*

29 *p* **A**

44 *p* *espr. cresc. poco a poco* *f*

52 *p* *ff* **B**

61 *dim.* *mf* *p* *cresc.* *f* **C**

73 *mf* *p* *cresc.* *f*

83 *ff* *f* **C** 6

96 **Cadenza** 6 *ff* *p*

106 **Tempo I** 12 *pp* *sf* *sf* 4

128 5 **D** 2 *mf* *f* *sf* *ff* *p*

141 4 *p* *f dim.* *p < sf* *p < sf* *p > pp*

152 3 *pp* *dim.*

IV.

Andante $\text{♩} = 72$ 4 *p* 6

19 *p* 17

44 **Allegro con spirito** $\text{♩} = 144$ *p* 8

60 **A** *f* *ff*

70 **B** con sord. 12 *mf*

91 8 *open!*

108 *f*

121 **C** 12 *f*

143 **D** 4 *f* *ff*

155

163 **E** 16 4

188 4 **F** Solo *pp* 4 216 4 *f*

223 Solo **G** *f*

233 2 6

248 **H** *ff*

258 7 **J** *f* *ff*

273 con sord. 12

296 **K** 8

313 **L** open! *f* **Soli**

325 *f*

338 8 *f*

355 **M** **N** *ff*

366

373

382 **Molto meno mosso** 11 *ff* *f* *ff*

404 **stringendo** **Tempo I**

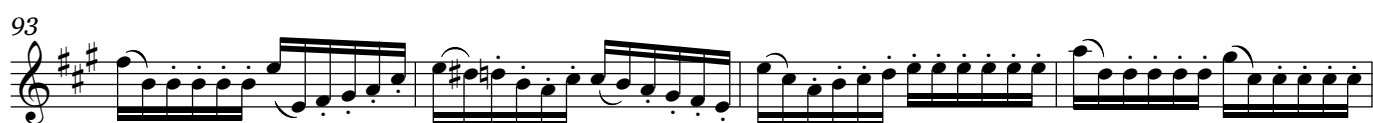
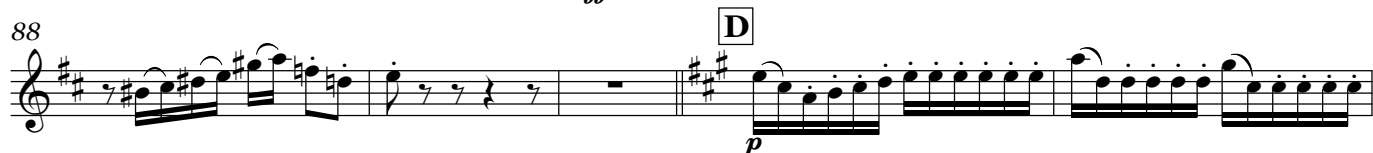
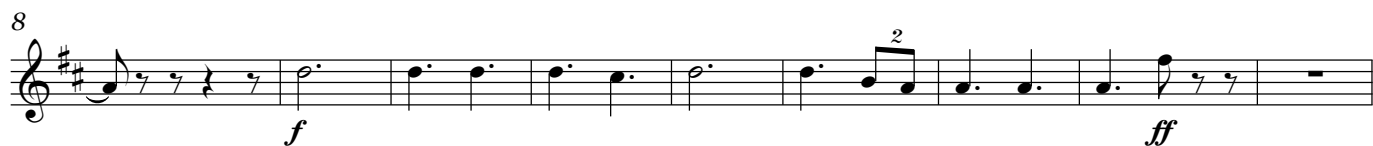
416 **Più mosso** 4

428 5

440 4

Serenade

I. Pezzo in forma di sonatina

P. I. Tchaikovsky Op.48
arr. I. RaeAndante non troppo $\text{♩} = 126$ 

110 *p* $\text{< } \text{> } \text{<}$ *p* $\text{< } \text{> } \text{<}$ *mf*

117 *f* *ff* **F**

123

129

134 **G** *p cresc.*

140 *mf* *f*

146 *ff* *ff* **H**

153 *f*

160 *cresc.*

168 *ff* *cresc.* **I**

178 *ff* *cresc.* *ff*

188

195 *f* **I** *f*

203 *ff*

K

p

214

219 **L**

pp *poco cresc.* *p cresc.*

232 *cresc.*

239 **M**

f *ff* *ff*

246

250 **N**

ff *ff*

261 *mp cresc.* *f* *ff*

266

270

275 **Andante non troppo**

f *ff sf sf f*

284 *ff* *fff*

II.

Moderato. Tempo di Valse

Flügels ad lib. *dolce e molto grazioso*

11

20 **A** a tempo 8 4 stringendo 4 rit. 3 a tempo 7

42 9 **B**

59 *mf* *f* To Coda Φ

68 rit. a tempo **C** 28 Hn.

104 4 **D** 2 dim. *p* *p*

117 *cresc.* *mf*

127 rit. **E** a tempo *f* D.S. al Coda

177 Φ Coda

184 2 **F** 23

213 2. *pp* *pp* *pp*

III.

Elegia $\text{♩} = 69$

Musical score for Trumpet 3 in B \flat , Movement III, Elegia. The score is in 3/4 time with a tempo of 69 beats per minute. It consists of 115 measures across 10 staves. The key signature has three sharps (F#, C#, G#). The score includes various dynamics (*pp*, *mf*, *mp*, *ff*, *p*, *f*, *dim.*, *sf*), articulations (accents, slurs), and performance instructions (Solo, Cadenza, Tempo I). Section markers A, B, and C are present. Rehearsal marks 9, 18, 34, 42, 50, 59, 68, 77, 89, 103, and 115 are indicated at the start of their respective staves.

123 6 5 **D** 2

f *sf* *ff* *p*

141 *cresc.* *f* 4 *p* *sf* *p* *sf* *p* *pp*

152 *pp* *dim.* 3

IV.

Andante $\text{♩} = 72$ 12

p

19 7 *p* *pp*

35

44 Allegro con spirito $\text{♩} = 144$ *p*

52 4 consord. **A** 8 open 11 *p cresc.* *ff*

82 con sord. **B** 8 *mf* *mf*

98 open

108 16 **C** *f*

130 4

140 **D**

f

150 *ff*

158

166 **E** 2 *f* *f*

178 4 Solo *pp*

192 **F** *pp* 4

220 3 **G**

233 7 *f* 2

249 **H** *ff*

258 6 *f*

271 **J** *ff*

279 con sord. 12

295 con sord. **K**

mf

304 8 open!

320 **L** Soli *f*

334 14 2 **M** *f*

357 4 **N** *ff*

369

377

386 **Molto meno mosso** *ff* *sf*

400 **stringendo Tempo I** 10 4 4 4 *ff*

425 **Più mosso** 6

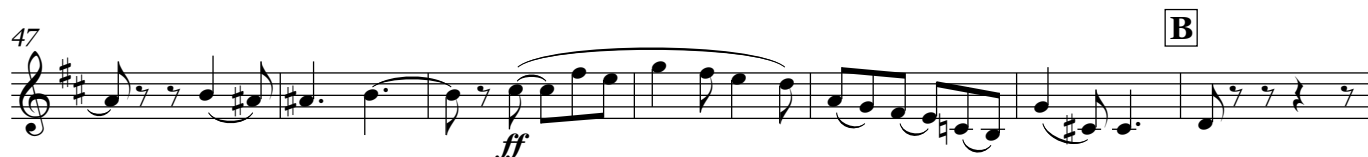
439 4

Serenade

I. Pezzo in forma di sonatina

P. I. Tchaikovsky Op.48
arr. I. Rae

Andante non troppo $\text{♩} = 126$



110

p *p* *mf*

117

f

122 **F**

ff

127

con sord.

134 **G** *con sord.* *p cresc.* *open* *f*

145

ff *ff*

151 **H**

f

158

3 *cresc.*

168

ff *15* *ff*

189 **I**

f

196

202

ff

208

K

8

pp

220

224

L

9

cresc.

237

2

M

3

f *ff* *ff*

246

3

253

N

3

ff *ff*

3

261

mp cresc. *f*

267

273

Andante non troppo

8

f

286

2

ff *fff*

II.

Flügels ad lib. **Moderato. Tempo di Valse**
dolce e molto grazioso

10

18 *rit.* **A** a tempo *stringendo* *rit.* 3

34 a tempo 7 8 **B** *mf* *f*

55 To Coda \oplus

64 *rit.*

72 a tempo **C** 2 *mf* 10 *mf*

92 *mf* *mf* *cresc.*

102 9 **D** 2 4 *p* *cresc.*

121 2 *mf cresc.*

128 *rit.* **E** a tempo 2 D.S. al Coda

III.

Lullaby

pp *mf* pp *mp* pp *<* *>*

9 pp *mf* pp *>* pp

17 *mf* *ff* *mf* 10 *p*

33 *p*

41 *p*

49 *p*

57 *ff* *dim.* *mf* 3

64 *f* *mf* 6

A **B**

76 *f* 4 *f* *ff*

86 [C] 5

96 *mf* *p* *mp* *mf* *f* Cadenza 5

109 **Tempo I** *pp* *mp* *pp* *mf* *pp*

117 3 *pp* *mf* *mf* *p*

128 9 [D] 5 *f*

145 *sf* *p* *sf*

149 7 con sord. *pp*

IV.

Andante $\text{♩} = 72$
(sempre con sord.)

open 8 *p*

19 7 *p* *pp*

35

Trumpet 4 in B \flat

7

Allegro con spirito $\text{♩} = 144$

44 **8** Solo **A** **4** **8** *p* *ff*

70 **13** con sord. **B** *mf*

92 *mf* open **5** *mf* <

106 **15** **C** *f* *f*

130 **2** *f*

141 **D** *f*

152 *ff*

163 **E** **2** *f* **2**

176 *f* **2** Solo *pp* **4**

192 **F** **4** *f* **3**

226 **G** *f* *f*

237 **4**

249 **H** **11** *ff*

268 **J** *f* *ff*

276 11 con sord. *mf*

296 **K**

306 open! 4

320 **L** *f*

333 14 *f*

356 **M** 3 **N** *ff*

368

377

386 **Molto meno mosso**

400 10 stringendo 4 Tempo I 9 Più mosso *ff*

428 3

440 4

Serenade

I. Pezzo in forma di sonatina

P. I. Tchaikovsky Op.48
arr. I. Rae

Andante non troppo ♩ = 126

f **ff** **sf** **sf** **f**

10 **ff** **f** **Soli**

24 **f** **cresc.**

37 **A** **Allegro moderato** ♩ = 72 **f** **cresc.**

47 **B** **ff**

71 **C** **f**

79 **ff**

87 **D** **pp**

99 **E** **pp**

107 **poco cresc.**

119 **F**
f *ff*

125

133 **G** 5

144 *f* *ff*

150 **H** 2 *f*

158 3 *cresc.*

168 19 *ff*

192 **I** 2 *f* 2

201 *ff*

207 **K** 8

218 *pp*

222 **L**

226 9 *mp*

239 M 4

f *ff*

249

ff

254 N 5

ff *f*

265

ff

270

275 **Andante non troppo**

f *ff sf sf f*

284

ff *fff*

II.

Moderato. Tempo di Valse

1

pp

8

poco cresc.

15 rit. A a tempo no V.S.

mf

4 Horn in F

22 stringendo 4 rit. 3 a tempo 7 4

46 mp *cresc.* mf f 3 **B**

56 To Coda Φ

64 rit. a tempo

73 **C** 8 mf *cresc.*

86 *dim.* 12

102 ff *largamente* *dim.*

110 **D** 2 p p

118 3 mf *cresc.* 2

128 rit. **E** a tempo D.S. al Coda

177 Φ Coda

185 **F** f

194 3 mf *dim.*

205 *pp* *pp* 5

213 *pp*

III.

Elegia $\text{♩} = 69$

9 *pp* *mf* *pp* *mp* *pp* *<* *>*

17 *mf* *ff* *mf* *p* *cresc.*

34 *mf* *f* *largamente*

42 *mf* *f* *largamente* *B*

71 *p espr.* *più f* *p* *cresc.* *3*

81 *ff*

89 *C* *5* *mf* *p* *mp* *mf* *f*

102 *Cadenza* *5* *Tempo I* *pp* *mp* *pp*

114 *mf* *pp* *<* *>* *pp* *mf* *8*

129 **5** **D** *f* *sf ff* *p* *cresc.*

141 **6** *p* *sf* *p* *sf*

150 *p* *pp*

154 *pp* **3**

IV.

Andante $\text{♩} = 72$

2 *p*

11 **5** *p*

25 *pp*

35

Allegro con spirito $\text{♩} = 144$

44 **10** *p* *cresc.* **A** **9**

70 *ff* **4** *f* *mf* **8** **2**

84 **B** Solo *mf*

97 *mf* *f* **20** **C** *f*

128 *f* 2

141 **D** 4 *ff*

154 *f* **E** 3 2 4 *f*

165 *pp* **F** 2

182 *f* **G** 16 *f*

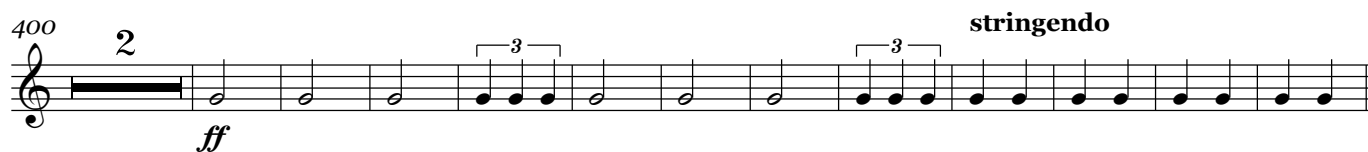
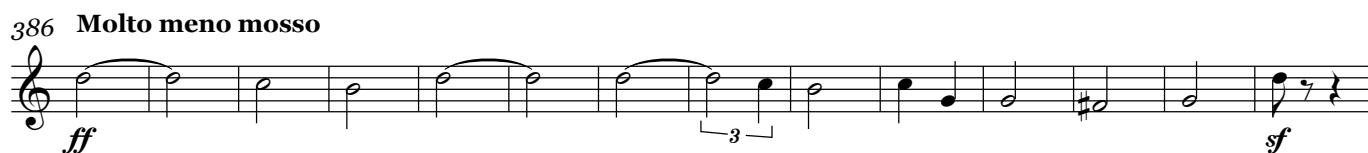
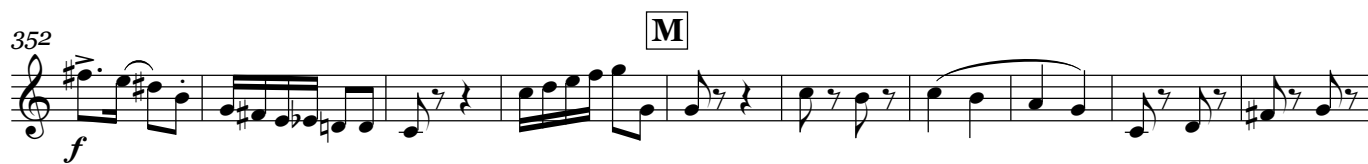
195 3 2 *ff* **H** 3 3 3 3 4 2 *ff*

236 *f* **J** 4 *ff*

247 4 8 *f* *mf*

282 *mf* **K** 3

296 6 *mf* **L** 15 *f*



Serenade

I. Pezzo in forma di sonatina

P. I. Tchaikovsky Op.48
arr. I. Rae

Andante non troppo ♩ = 126

6

f *ff sf sf*

15 *ff* *mf* *p dim.* *pp*

35 **A** Allegro moderato ♩ = 72 **B** *p*

58 *mf < ff* *p*

67 *mf < ff* *ff*

74 **C** *f* *f*

89 **D** *ff* *p*

94

98 *pp*

105 **E** *p < > <* *mf <*

117 **F** *f* *ff*

126

ff

131

138 **G**

ffp cresc. poco a poco *mf cresc.*

143

f *ff*

150

ff

156 **H**

p *mf < ff*

180

p *mf < ff*

188

ff

195 **I**

f *ff*

210 **K**

p *p*

210 **L**

p

230

236

f *f < ff* *ff*

246

f

252

ff **N**

258

p *cresc. poco a poco* *f*

264

ff 2 2

273

f *Andante non troppo* 2 *ff*

281

f 6 *ff* *fff*

II.

Moderato. Tempo di Valse rit. 9 **A** a tempo 2 8 4

26 stringendo 4 rit. 3 a tempo *pp*

38 8 2 *mf* *f*

54 **B** 2 To Coda \oplus

64 2 rit. a tempo **C**

74 24 7 *mf cresc.* *mf cresc.*

109 **D** 20 rit. **E** a tempo 2 D.S. al Coda *dim.* *p*

Coda 177 \oplus

184 **F** 2 *f*

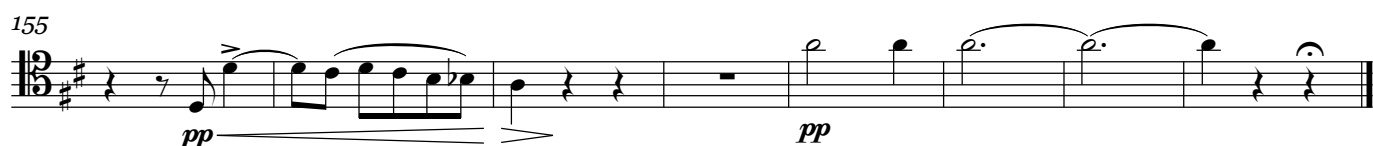
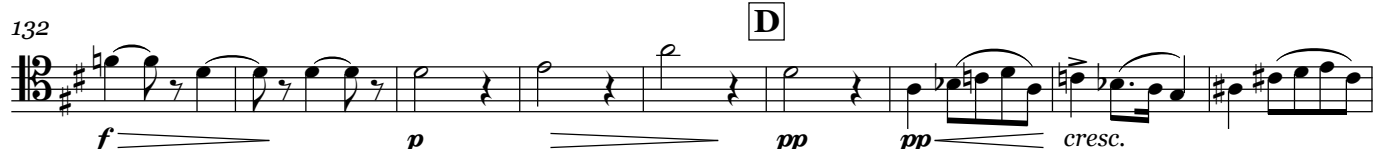
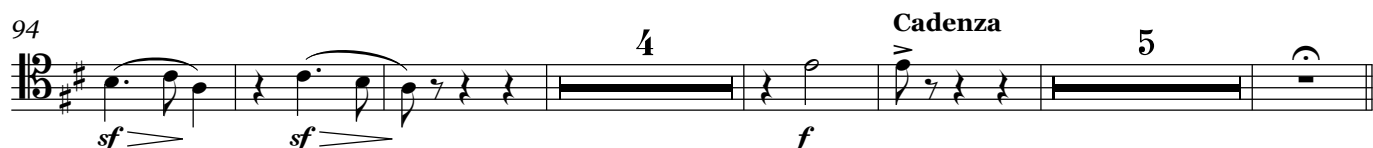
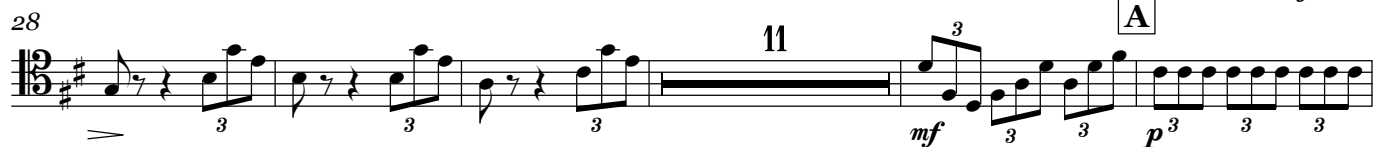
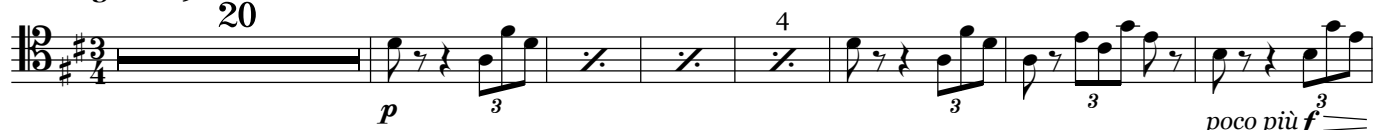
195 19

218 2 *pp*

III.

Elegia ♩=69

20



IV.

Andante $\text{♩} = 72$

12 24

p

44 Allegro con spirito $\text{♩} = 144$

9

p *cresc.*

58 **A** 4

f *ff*

70 **B** 12 16

f

104

f

115 **C** 8

132 5

f

144 **D** 6

f *ff*

158

168 **E** 10

f

184 **F** 4 4 4

pp

216 3

f

229 **G** 3 9 *f*

247

255 **H** 5 *ff* *ff*

266 **J** 4 *ff* 4

281 **K** Soli 12 *mf*

302 8

320 **L** *f*

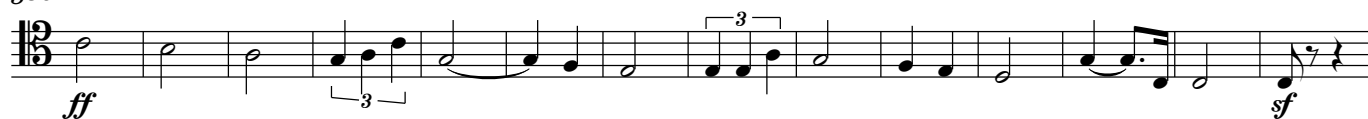
330 7

344 *f* 3

354 **M** **N** 4 *ff*

366 2

376 4

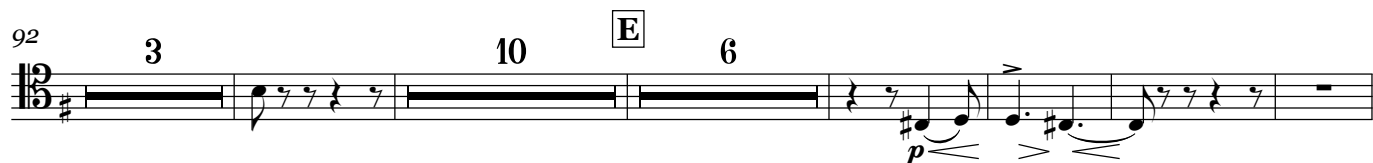
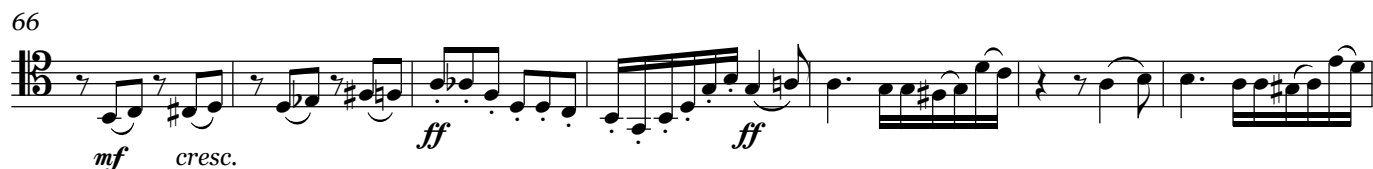
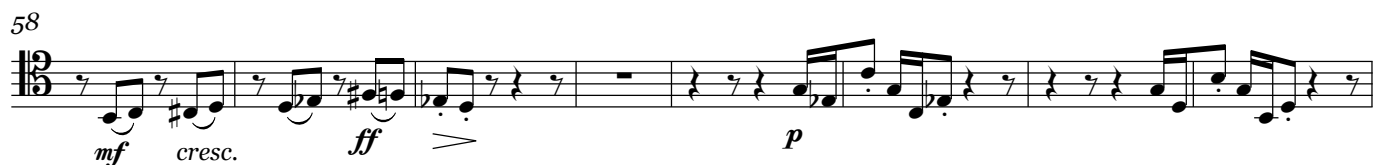
386 **Molto meno mosso**

Serenade

I. Pezzo in forma di sonatina

P. I. Tchaikovsky Op.48
arr. I. Rae

Andante non troppo ♩ = 126



126 *ff*

131

137 **G** *ffp cresc. poco a poco*

142 *mf cresc.* *f* *ff*

149 *ff*

155 **H** 17 *p*

177 *mf cresc.* *ff* *p*

185 *mf cresc.* *ff* *ff*

192 *f* *f* **I**

201 4 **K** *ff* *p*

211 3 10 **L** 4 *p*

230

235 *f* *f* **M** *ff* 3

245



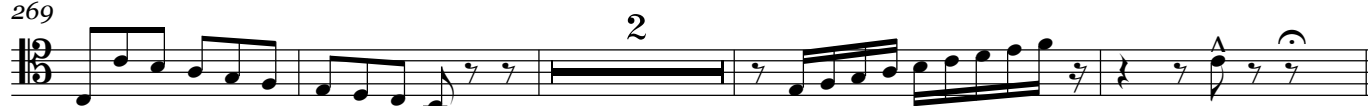
251

257 N

262



269

275 **Andante non troppo**

282



II.

Moderato. Tempo di Valse

8



15



4

Trombone 2

22 stringendo 4 rit. 3 a tempo 6 8

pp

50 2 **B**

mf *f*

60 To Coda Φ

69 rit. a tempo **C**

mf

78

mf cresc.

87

dim. *mf*

96

cresc. 7

109 **D** 20 rit. **E** a tempo 2 **D.S. al Coda**

p

177 Φ

Coda

185 **F**

195 5 *pp*

208

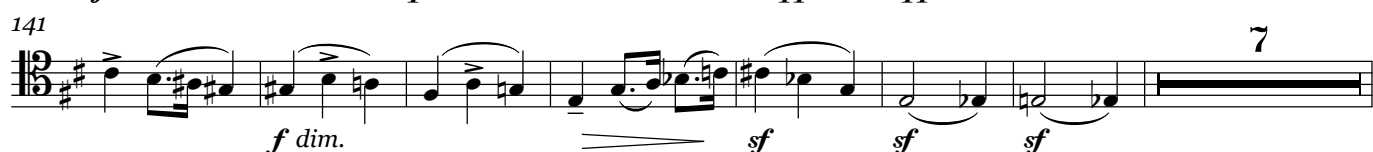
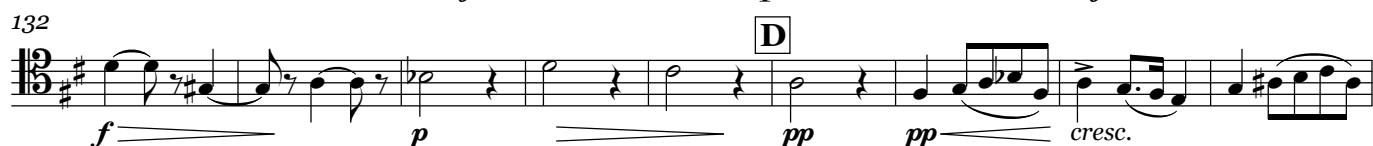
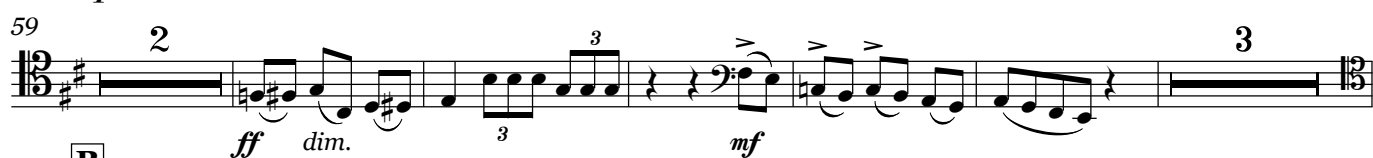
216

III.

Elegia $\text{♩} = 69$

20

4



IV.

Andante $\text{♩} = 72$

12 24

p *ff*

44 Allegro con spirito $\text{♩} = 144$

3

p *p*

56 **A** 4

cresc. *f* *ff*

69 **B** 12 16

f

104 *f*

f

116 **C** 8

f

133 **D** 8 6

f *ff*

153

f

164 **E** *f*

f

173 **F** 10 4 4

pp

196 4 3

f

229 **G** 3 9

f

247

f

256 **H** 5 *ff* *ff*

268 4 **J** 4 *ff*

283 12 **K** *Soli* *mf*

305 8 **L** *f*

323

333 7

347 6 **M** *f*

360 4 **N** 2 *ff*

374 4

385 **Molto meno mosso** *ff* 3 3

398 10 **stringendo** 4 **Tempo I** 9 *sf*

426 **Più mosso**

438 4

Serenade

I. Pezzo in forma di sonatina

P. I. Tchaikovsky Op.48
arr. I. RaeAndante non troppo $\text{♩} = 126$

9 6 7

f *ff sf sf*

28 *mf* *p dim.* *pp*

37 **A** Allegro moderato $\text{♩} = 72$ *f* *cresc.*

46 *ff* **B**

54 *p* *mf cresc.* *ff*

61 *p* *mf cresc.*

68 *ff* *ff*

76 **C** *f* *f*

86 **D** *ff* *ff* *p leggiero*

93 7

106 **E**

4

p

114

2

f

121 **F**

3

ff

ff

130

con sord.

3 **G**

p cresc.

140

open

mf

f

146

ff

ff

154 **H**

f

161

cresc.

ff

170

p

177

mf cresc.

ff

p

184

mf cresc.

ff

ff

191 **I**

f

199



209

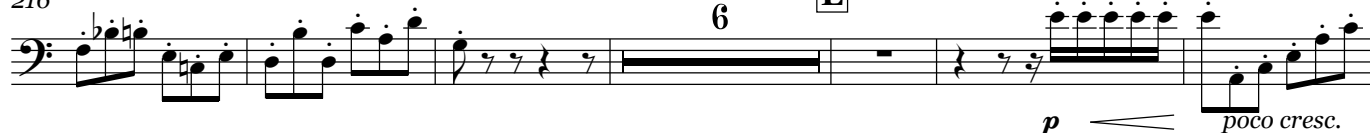
K



216

6

L



228



235

M

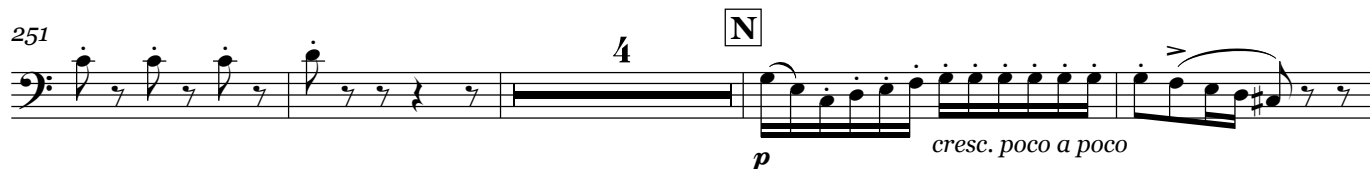


243



251

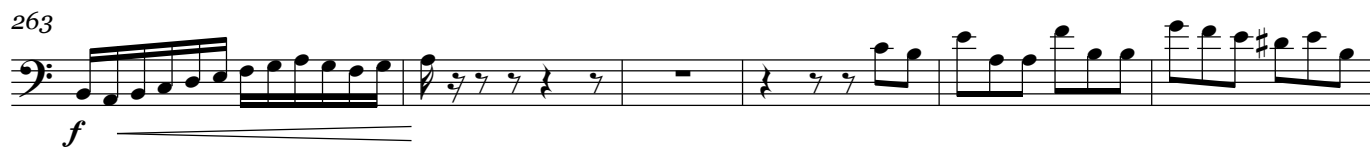
N



259



263



269



Andante non troppo

275



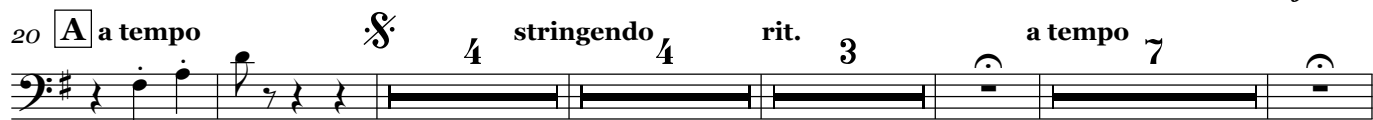
282

6



II.

Moderato. Tempo di Valse



Coda 177 Φ

185 **F** 6 *f*

198 4 8 *dim.* *pp*

208

216

III.

Elegia $\text{♩} = 69$ 20 *p* 4 *poco più f*

28 3 12 **A** *p espr.* *poco a poco cresc.*

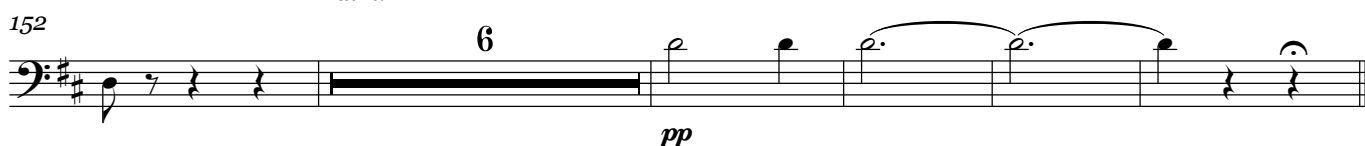
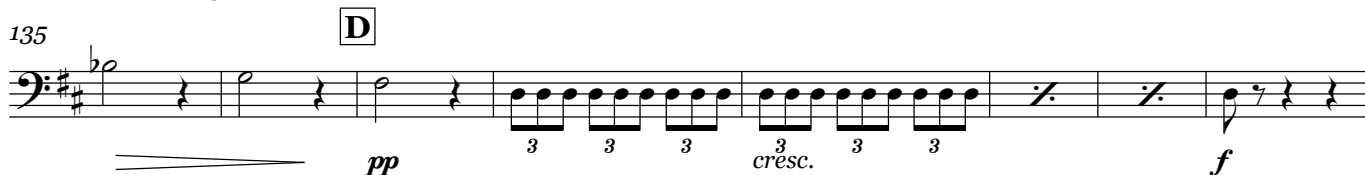
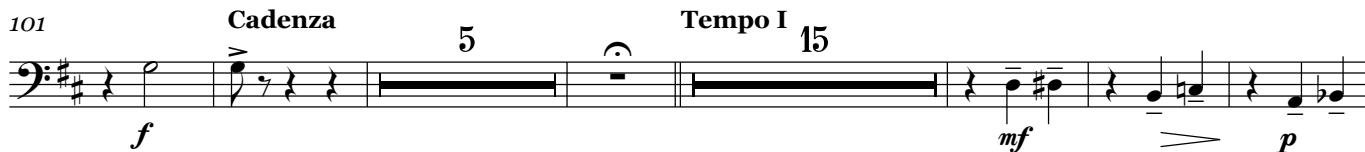
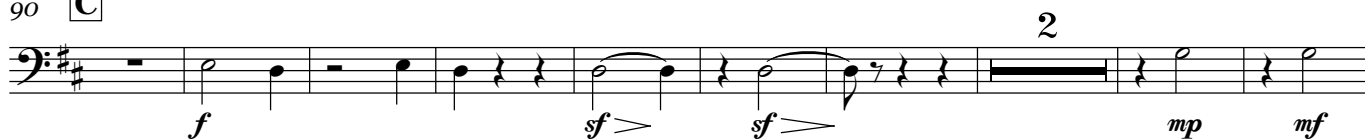
46 *p*

53 6 *ff dim.* *mf*

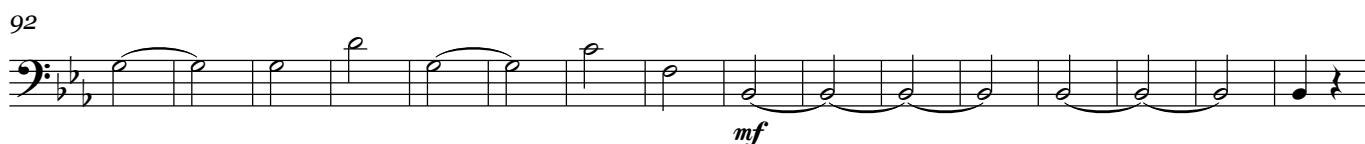
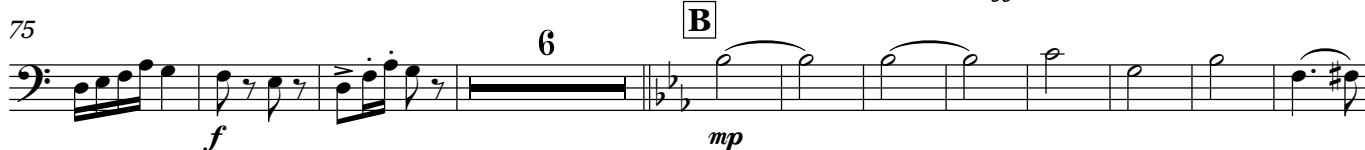
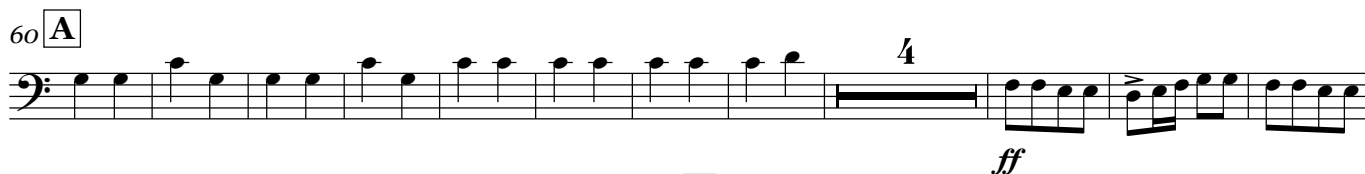
64 2 **B** *f* *mf* *p* 3 3 3 3

72 *cresc.* 3 3 3 3 3 3 *f* *dim.* 3 3 3 3

78 *p* *f cresc.* 6

90 **C**

IV.

Andante $\text{♩} = 72$
1244 Allegro con spirito $\text{♩} = 144$ 

108 **C** 16 *f*

132 **D** 7

146 *f* *ff*

156

165 **E** 16 *pp*

188 **F** *poco a poco cresc.*

196 **G** 16 8

240 *f*

252 **H** 5 *ff*

263 **J** 3 *ff* *ff*

277 4 *ff* *f*

289 **K** 2 24 *mf*

320 **L** 20 **f** 7

355 **M** 2 **N** **ff**

366

377

386 **Molto meno mosso** **ff** 3 3

397 10 **stringendo** **f** **ff**

414 **Tempo I** 4 3 **Più mosso**

428

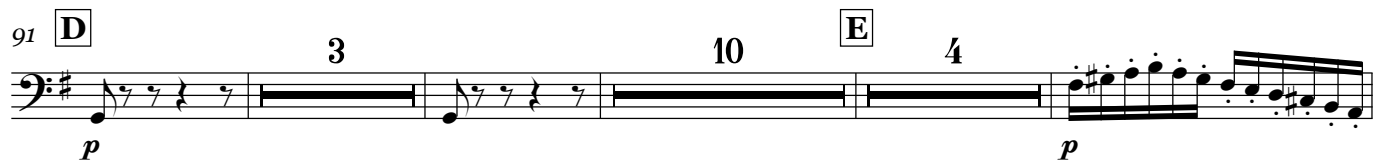
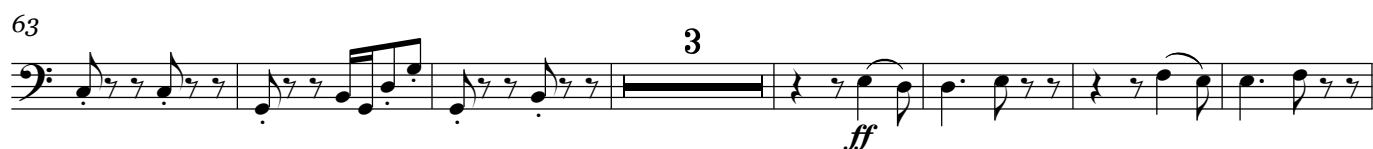
438 4

Serenade

I. Pezzo in forma di sonatina

P. I. Tchaikovsky Op.48

arr. I. Rae

Andante non troppo $\text{♩} = 126$ 37 **A** Allegro moderato $\text{♩} = 72$ 

126



132

138 **G**

148



155

H

163



171



180



189

I

200

K

218

L

226 **2**

più f \leq p \leq \geq \leq *mf* \leq

236 **2** **M** **3**

\geq \leq *f* *f* \leq *ff* *ff*

247 **4**

257 **N**

p *cresc. poco a poco*

262

f *f*

268

f *f*

275 **Andante non troppo** **5**

ff *sf* *sf* *f marc.*

286

ff *fff*

II.

Moderato. Tempo di Valse

pp

10 **rit. A a tempo no V.S.**

poco cresc. *mf*

4 Trombone 4

22 stringendo 4 rit. 3 a tempo

39 pp mp $cresc.$

48 3 **B** mf f

59 To Coda rit. 4

72 a tempo **C** mf

80 4 $dim.$ mf

91 $cresc.$

99 $cresc.$ ff $dim.$

108 **D** 3 p p $cresc.$

119 3

127 rit. **E** a tempo 2 D.S. al Coda

Coda

177 **Coda**

186 **F**

199

209

III.

Elegia ♩=69

20

Elegia 20

28 **A** 12 **p** *poco più **f***

47 *dim.* **p espr. poco a poco cresc.**

55 **4** **ff** *dim.* **mf** **3** **2** **f**

69 **B** **mf** **p** **3** **3** **3** **3** **3** **f**

76 *dim.* **3** **3** **p** **f cresc.** **ff**

85 **3** **C** **f** ***sf* >** ***sf* >**

97 **Cadenza** **5** **Tempo I** **12**

p **mp** **mf** **f**

121 *sf* *sf* *f* 5

132 *f* *p* *pp* 3 3 3 [D]

139 3 4 *f dim.* 3 3 3

147 5 6 *pp*

IV.

Andante ♩=72 25 12

44 Allegro con spirito ♩=144 [A] 15 4 *f*

72 *ff* *f* *mf*

82 2 [B] *mp*

97 16 *mf*

124 [C] 20 [D] *f* *ff*

153

163 E 8

176 *f* 2

184 *pp*

192 F *poco a poco cresc.*

f 3 3

232 G 8 2

252 H 4 2 *ff* *ff*

268 J 8 *ff* *ff*

286 *f* *mf* 2

296 K *mf*

309 L 16

336



346



358



368



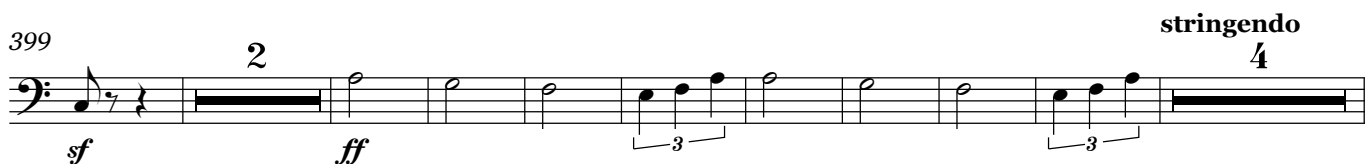
377



386 Molto meno mosso



399



414 Tempo I

12

Più mosso



433



442

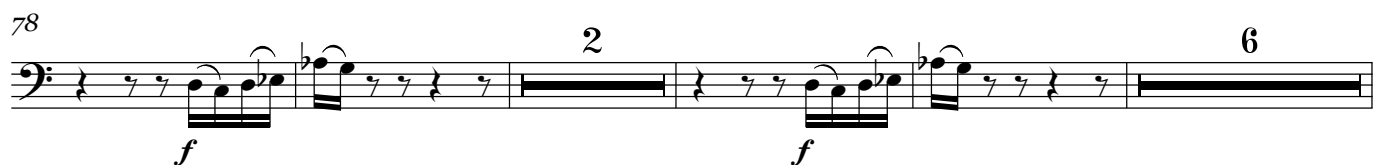
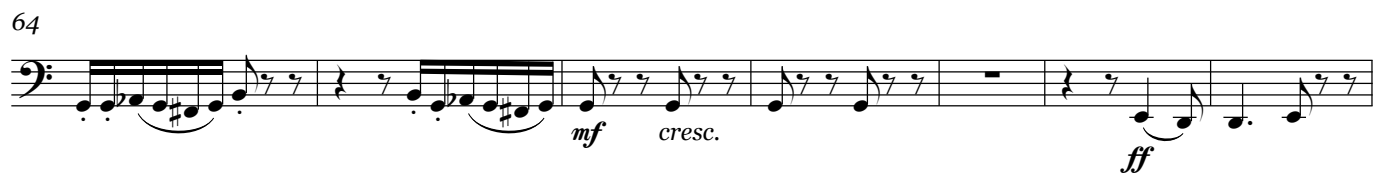


Serenade

I. Pezzo in forma di sonatina

P. I. Tchaikovsky Op.48
arr. I. Rae

Andante non troppo ♩ = 126

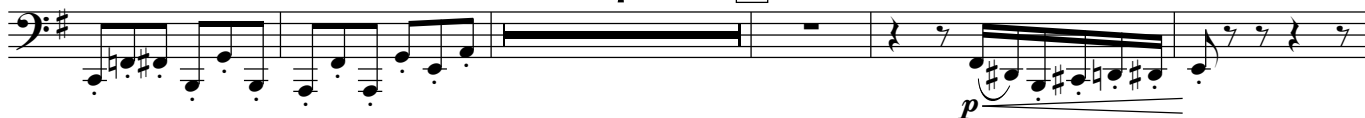
37 **A** Allegro moderato ♩ = 72

90

D

97

7

E

109



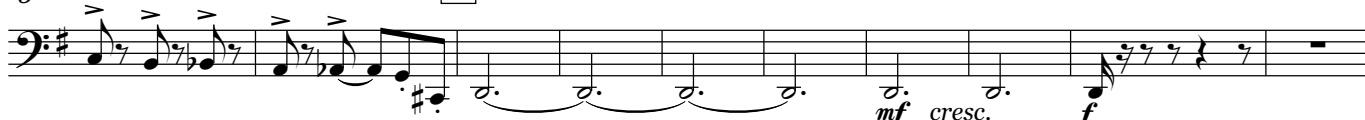
115

122 **F**

129



136

G

146

p cresc. poco a poco

154

H

162



170



176



182



189



197

210 **K**217 *p*

227



233

241 **M**

247



253



262



269



275 **Andante non troppo**

275 *f* *ff* *f* *f*

282 *f marc.*

287 *ff* *fff*

II.**Moderato. Tempo di Valse**

10 *pp* rit. **A** a tempo

poco cresc. *mf*

22 *stringendo* rit. *a tempo*

39 *mp* cresc.

48 **B** *mf* *f*

58 **To Coda** \oplus

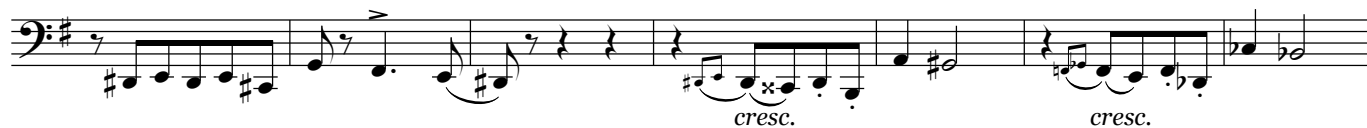
68 rit. *a tempo* **C** *mf*

77 *cresc.*

86



95



102

111 **D**

122



129



D.S. al Coda

177 Φ

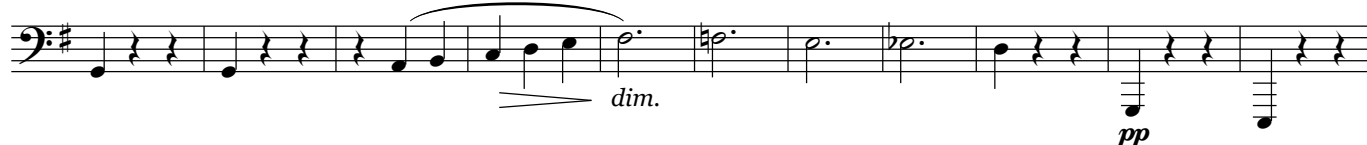
Coda



186

F

196



207

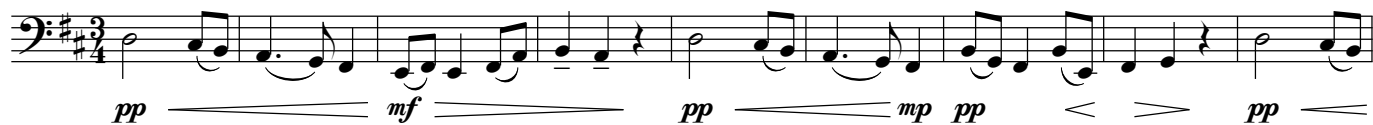


215

2



III.

Elegia $\text{♩} = 69$ 

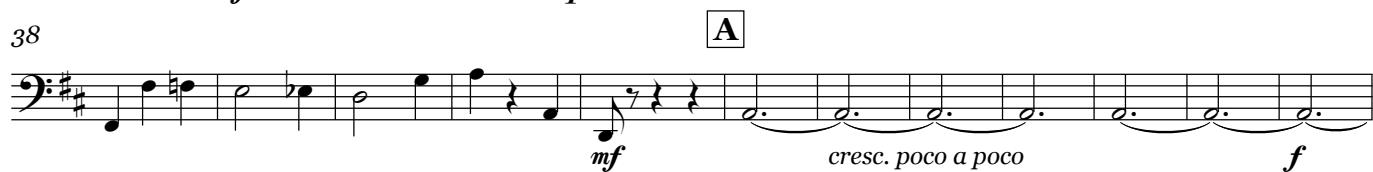
10



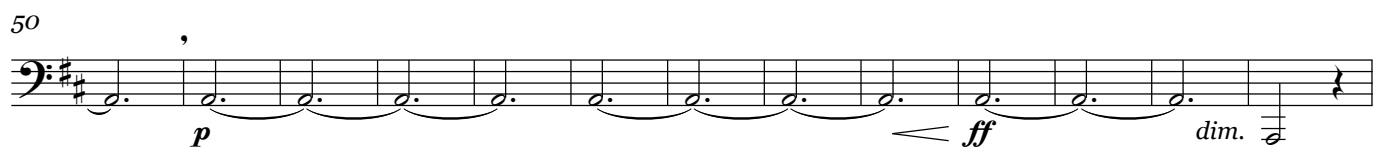
19



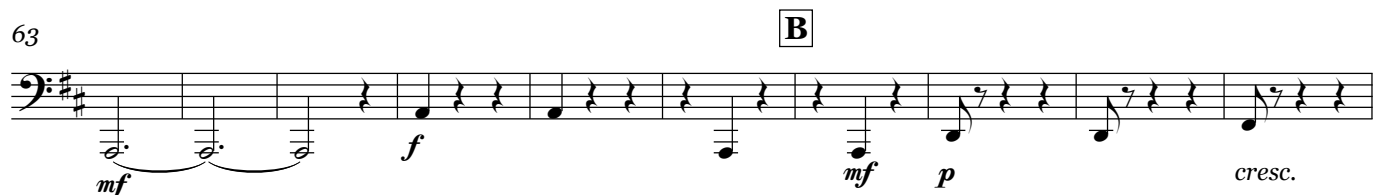
38



50



63



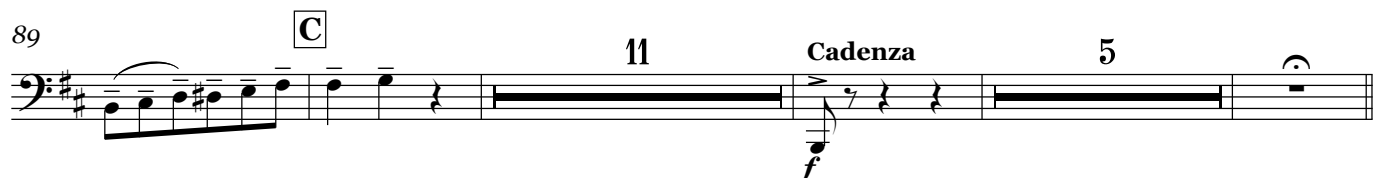
73



82



89



109

Tempo I



118



129

137 **D** *f* *sf ff* *f* *p*

pp *cresc.* *f dim.* *p*

150 *pp* **4**

IV.

Andante $\text{♩} = 72$

17

26 *p* *pp*

35 *p* *p* *pp*

44 Allegro con spirito $\text{♩} = 144$

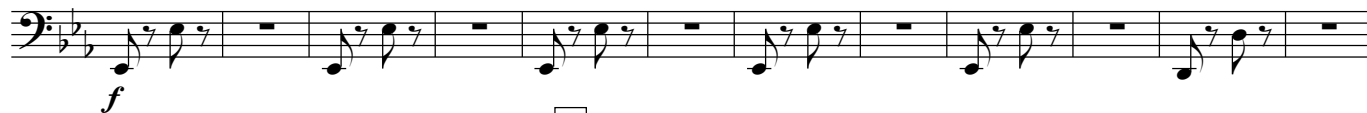
53 **7** **A** *f* *ff*

70 *ff* *f* *mf*

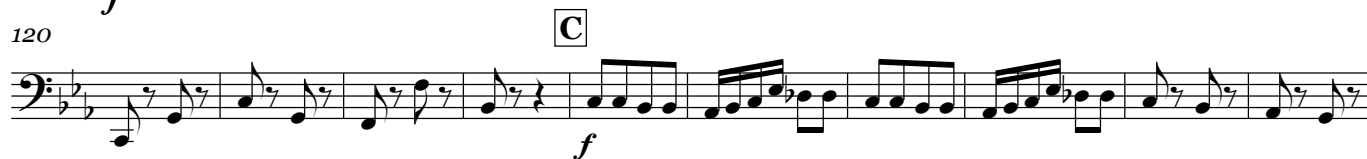
79 **2** **B** *mf*

90 **8**

108



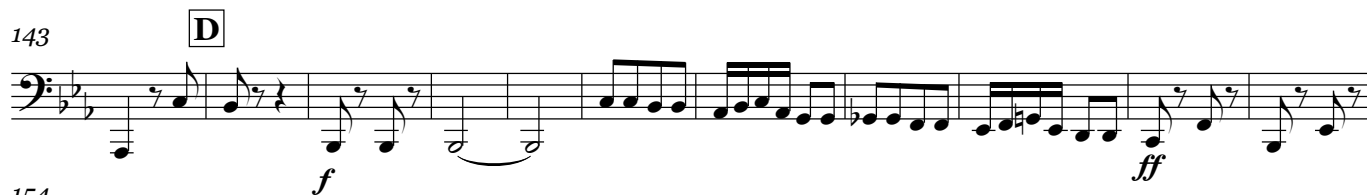
120



130



143



154



163



178



188



196



223



234



248



261 J

274

285 2

296 K

310 L

324

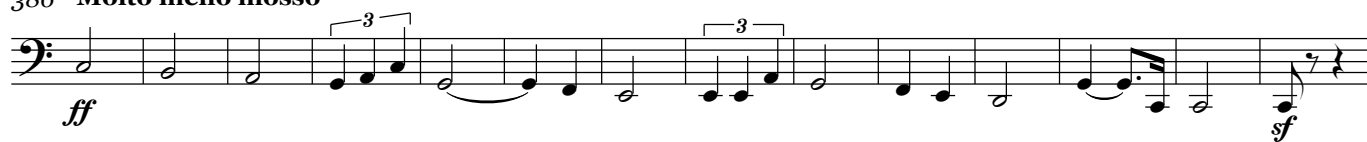
337

347 M

360 N

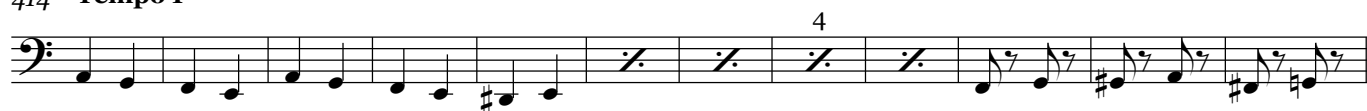
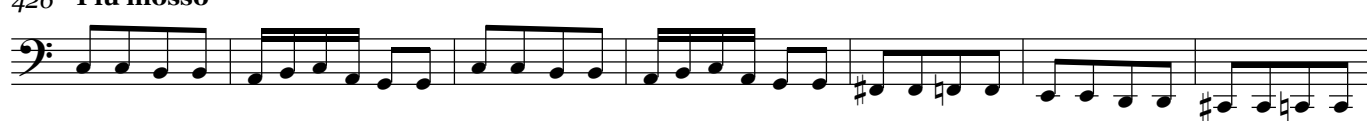
369

377 V.S.

386 **Molto meno mosso**

400

2

stringendo414 **Tempo I**426 **Più mosso**

433



442

